

**Free pdf sewing pattern 6817**

**Patron gratuit pdf 6817**

**Patrón gratis pdf 6817**

**Kostenlos Schnittmuster 6817**



**#6817**

**Cartamodello  
digitale pdf  
GRATIS**

[www.marfy.it](http://www.marfy.it)



## MARFY 6817

Tessuto occorrente: Tg 42 mt. 1,80 -  
Tg 46 mt. 1,90 - Tg 50 mt. 2,00 -  
Tg 54 mt. 2,10 - altezza 1,40.  
Disponibile dalla taglia 42 alla 54.

---

Fabric required: size 42 mt. 1.80 -  
size 46 mt. 1.90 - size 50 mt. 2.00 -  
size 54 mt. 2.10 -wide 1.40.  
Available from size 42 to 54.

---

Tissu nécessaire: taille 42 mt. 1.80 -  
taille 46 mt. 1.90 - taille 50 mt. 2.00 -  
taille 54 mt. 2.10 - largeur 1.40.  
Disponibile de la taille 42 à la 54.

---

Tejido que se necesita: talla 42 mt. 1.80 -  
talla 46 mt. 1.90 - talla 50 mt. 2.00 -  
talla 54 mt. 2.10 - ancho 1.40.  
Disponibile desde la talla 42 hasta la 54.

---

Erforderlicher Stoff: Gr 42 m. 1,80 -  
Gr 46 m. 1,90 - Gr 50 m. 2,00 -  
Gr 54 m. 2,10 - Höhe m. 1,40.  
Erhältlich in den Größen 42 bis 54.

## SCHEMA COMPOSIZIONE FOGLI CARTAMODELLO

SCHÉMA COMPOSITION FEUILLETS PATRON

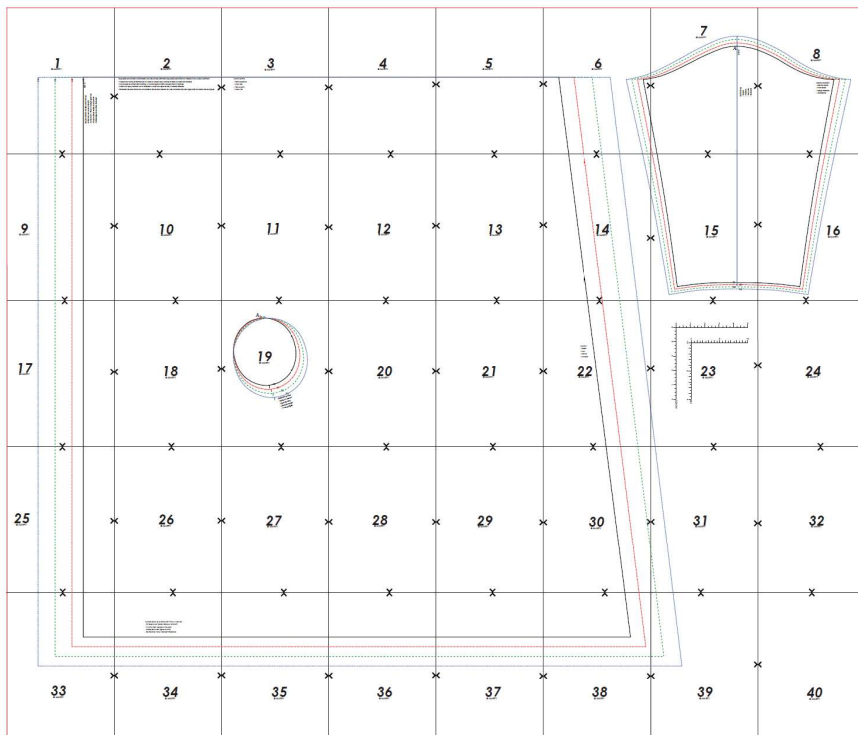
SHEETS ASSEMBLY SCHEME MARFY PATTERN

DIAGRAMA DE COMPOSICIÓN DE LAS HOJAS PATRON

SCHEMA ZUR ANORDNUNG DER SCHNITTMUSTER

*Marfy*

6817



### PIAZZAMENTO CONSIGLIATO SU TESSUTO

*Nota: il piazzamento è un suggerimento e dipende dall'altezza del tessuto.*

### PLACEMENT CONSEILLÉ SUR TISSU

*Note: le placement est un conseil et varie en fonction de la largeur du tissu.*

### FABRIC LAY PLAN

*Please note: the lay plan is a suggestion and dependent on the width of fabric.*

### COLOCACIÓN ACONSEJADA SOBRE EL TEJIDO

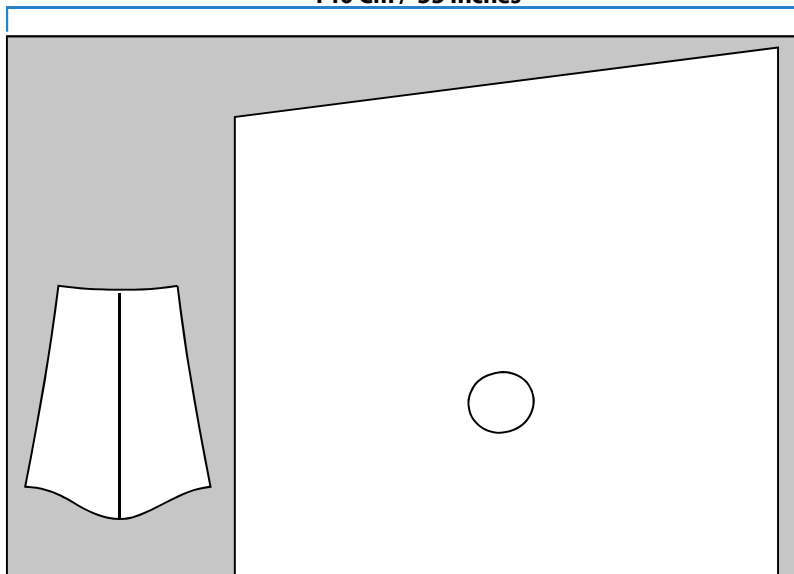
*Nótese: la colocación sobre el tejido es una sugerencia y depende del ancho de tejido.*

### EMPFOHLENE PLATZIERUNG AUF DEM STOFF

Bitte beachten Sie, dass diese Empfehlung nur ein Vorschlag ist und von den Ausmassen des Stoffmaterials abhängt.

140 Cm / 55 Inches

Cimosa - Lisièr - Selvedge - Orillo - Webkante



Cimosa - Lisièr - Selvedge - Orillo - Webkante

Piega - Pli - Pleat - Pliegue - Stoffbruch

**1**  
© MARFY

54

50

46

42

6817

MEZO DIETRO INTERO DRITTOFILO

- Milieu dos sans couture droit-fil
- Center back - Place on straight grain fold
- Centro espiada doblez de tela al hilo
- Vollständige hintere Mitte Fadenlauf



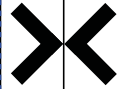
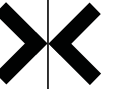
TA  
- C  
- C  
- C  
- S

# 2

© MARFY

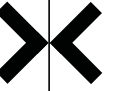
TAGLIARE UNO STRATO E RIFINIRE CON ORLATURA OPPURE TAGLIARE DUE STRATI DI TESSUTO E CUCIRLI DOPPIATI

- Coupez une couche et terminez par un ourlet ou coupez deux couches de tissu et cousez-les doublées
- Cut one layer and finish with hemming, or cut two layers of fabric and sew them in duplicate
- Cortar una capa y terminar con un dobladillo o cortar dos capas de tela y coserlas dobladas
- Schneiden Sie eine Schicht ab und schließen Sie mit dem Säumen ab, oder schneiden Sie zwei Lagen Stoff und nähen Sie sie doppelt



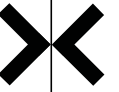
**3**  
© MARFY

PARTE SOPRA  
- Partie supérieure  
- Upper side  
- Parte superior  
- Oberer Teil



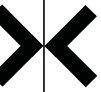
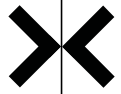
4

© MARFY



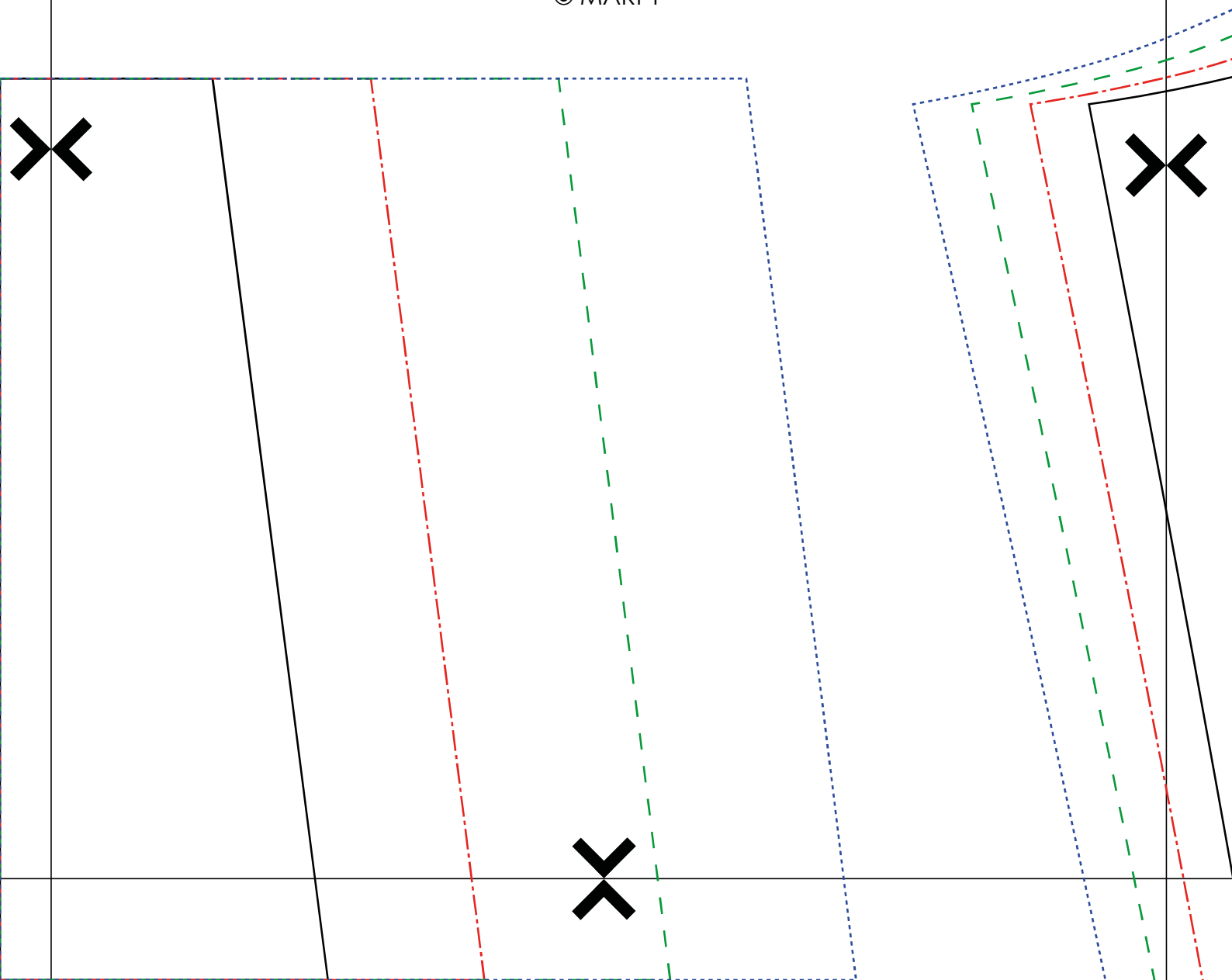
5

© MARFY

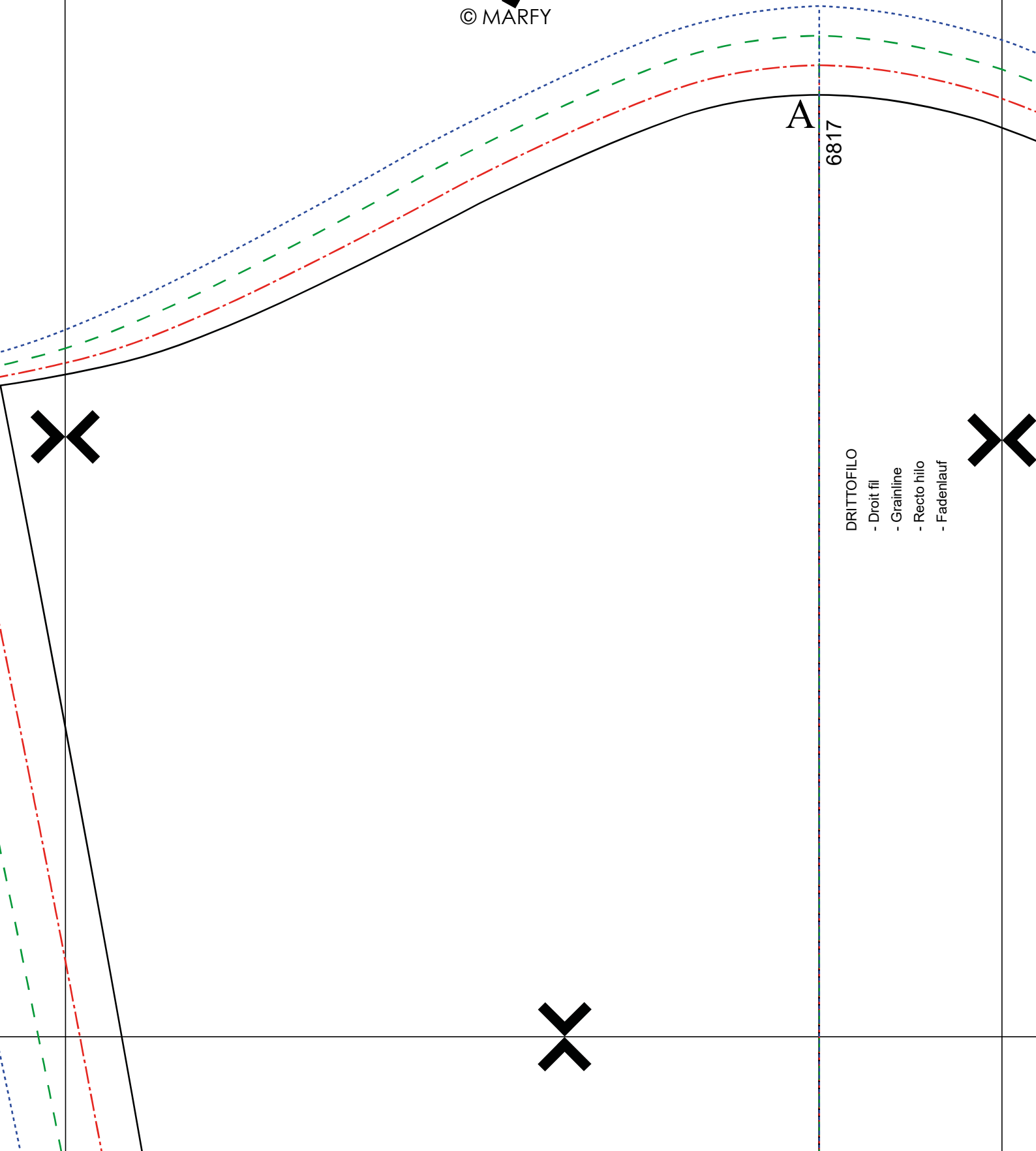




6  
© MARFY



7  
© MARFY



A  
6817

- DRITTOFILO
- Droit fil
  - Grainline
  - Recto hilo
  - Fadenlauf

X

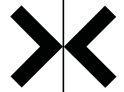
X

X

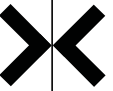
8  
© MARFY

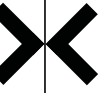
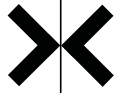
MANICA DAVANTI

- Manche devant
- Front sleeve
- Manga delantera
- Vorderärmel



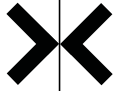
9  
© MARFY





**10**  
© MARFY



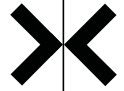
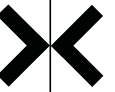


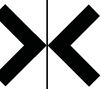
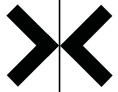
**11**  
© MARFY





**12**  
© MARFY

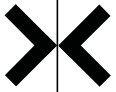




**13**  
© MARFY

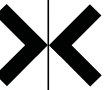


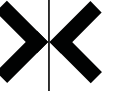




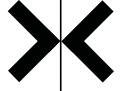
**14**

© MARFY





**15**  
© MARFY

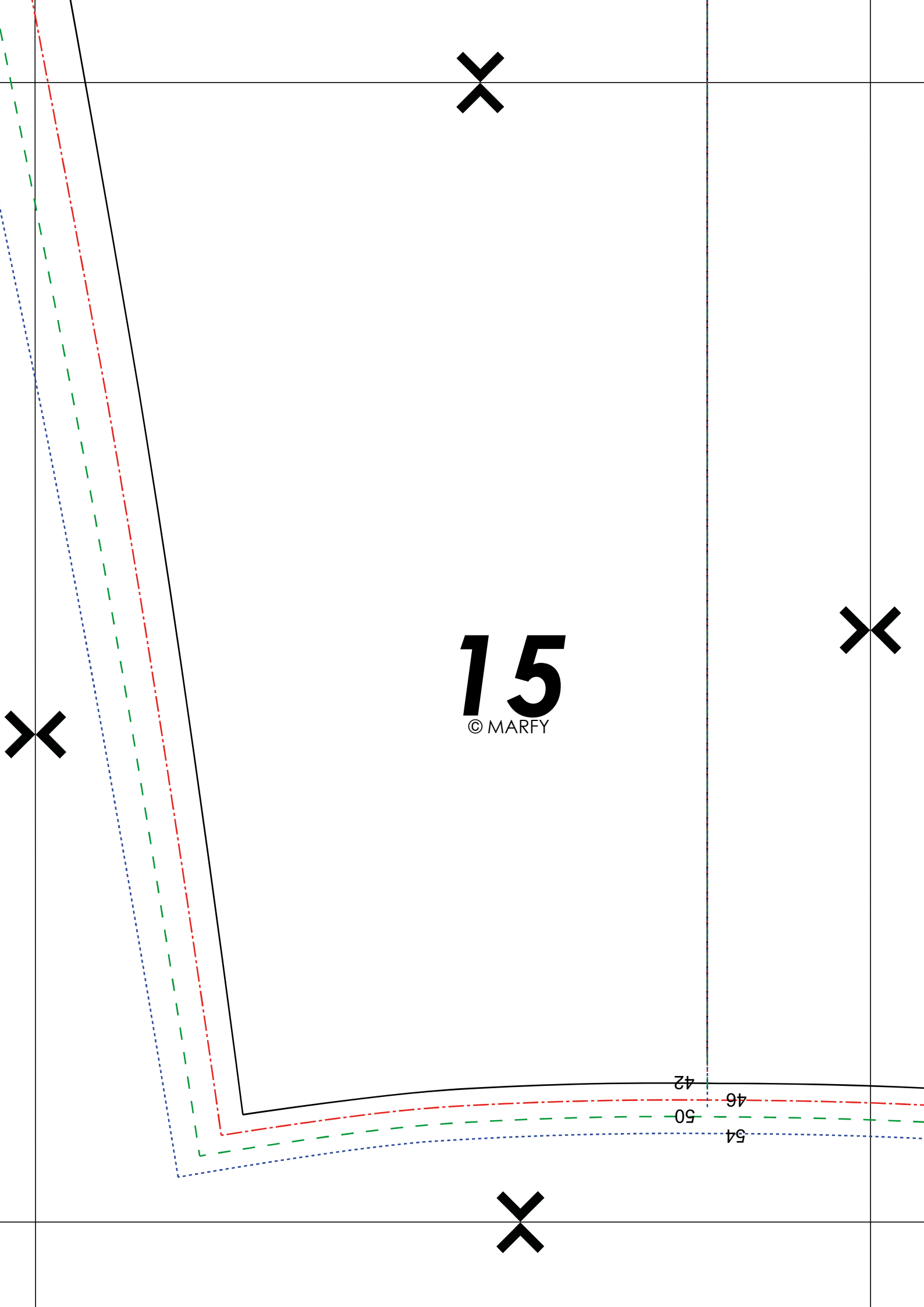


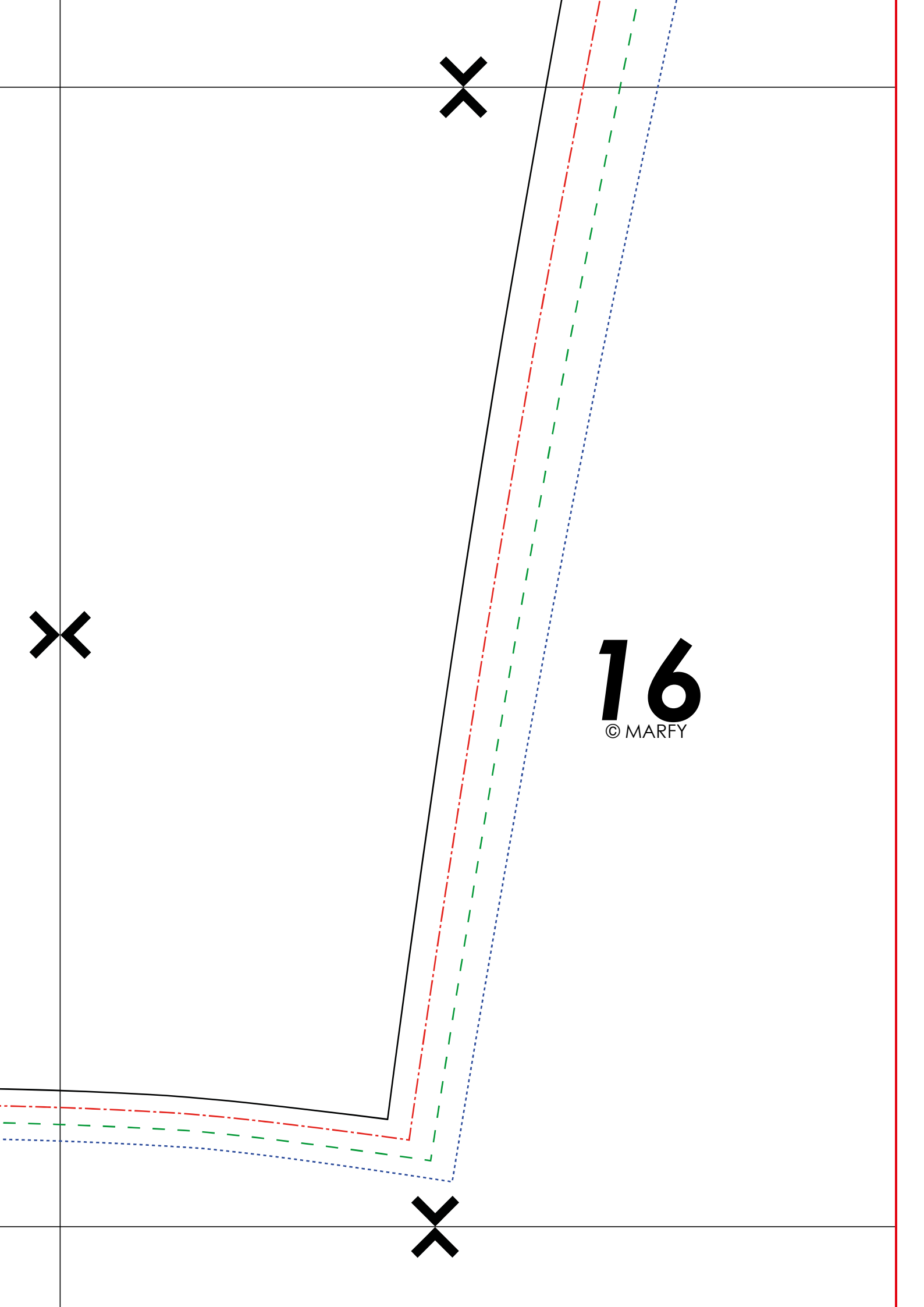
42

46

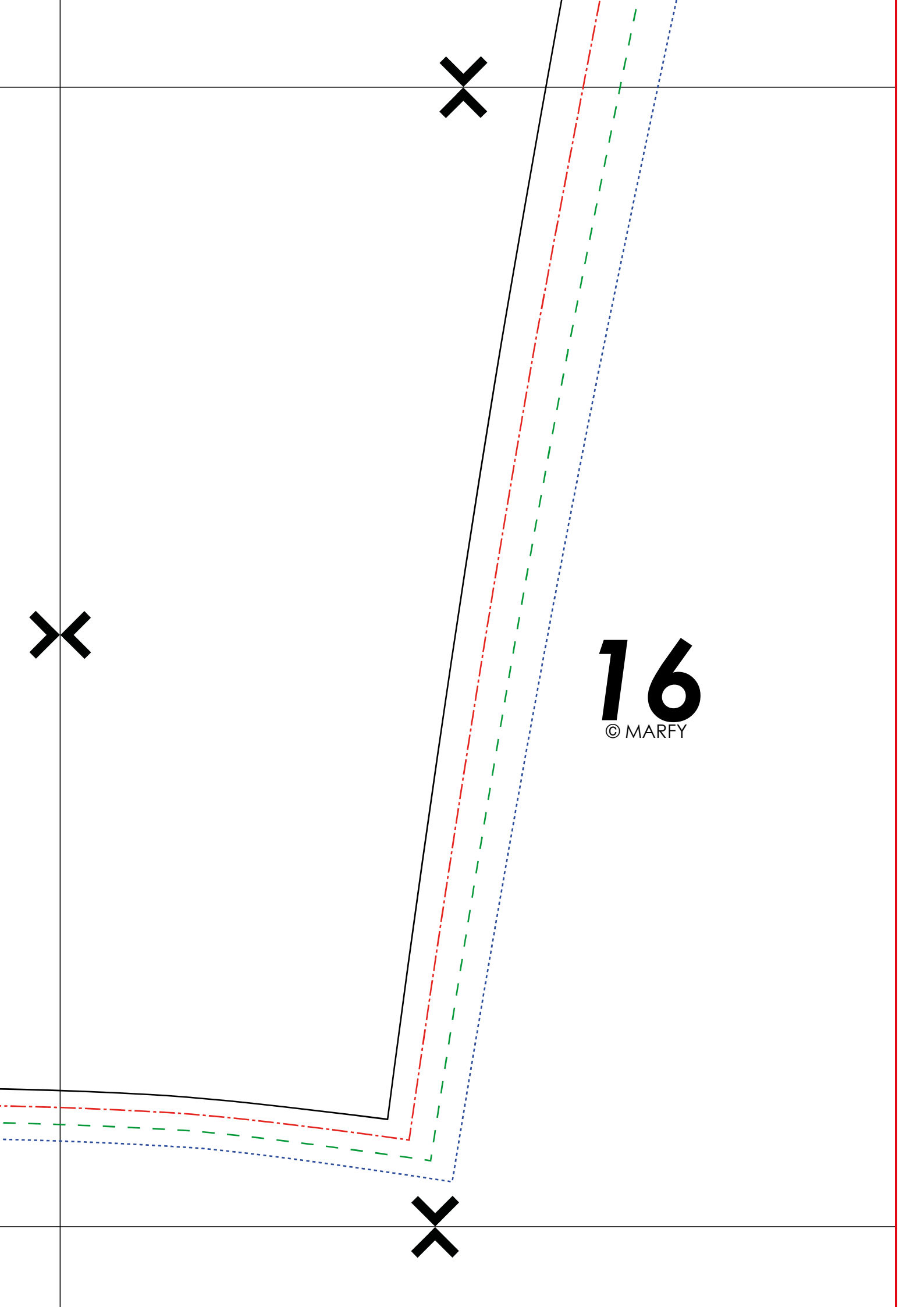
50

54

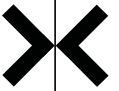


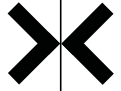


**16**  
© MARFY



**17**  
© MARFY





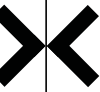
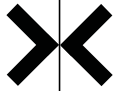
**18**  
© MARFY





A

**19**  
© MARFY



42

46

50

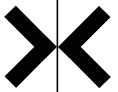
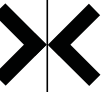
54

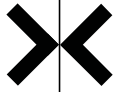
INSERIRE MANICA  
- Insérer la manche  
- Insert the sleeve  
- Introducir manga  
- Ärmel einfügen



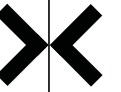


**20**  
© MARFY





**21**  
© MARFY





DAVANTI  
- Devant  
- Front  
- Delante  
- Vorderteil

**22**  
© MARFY



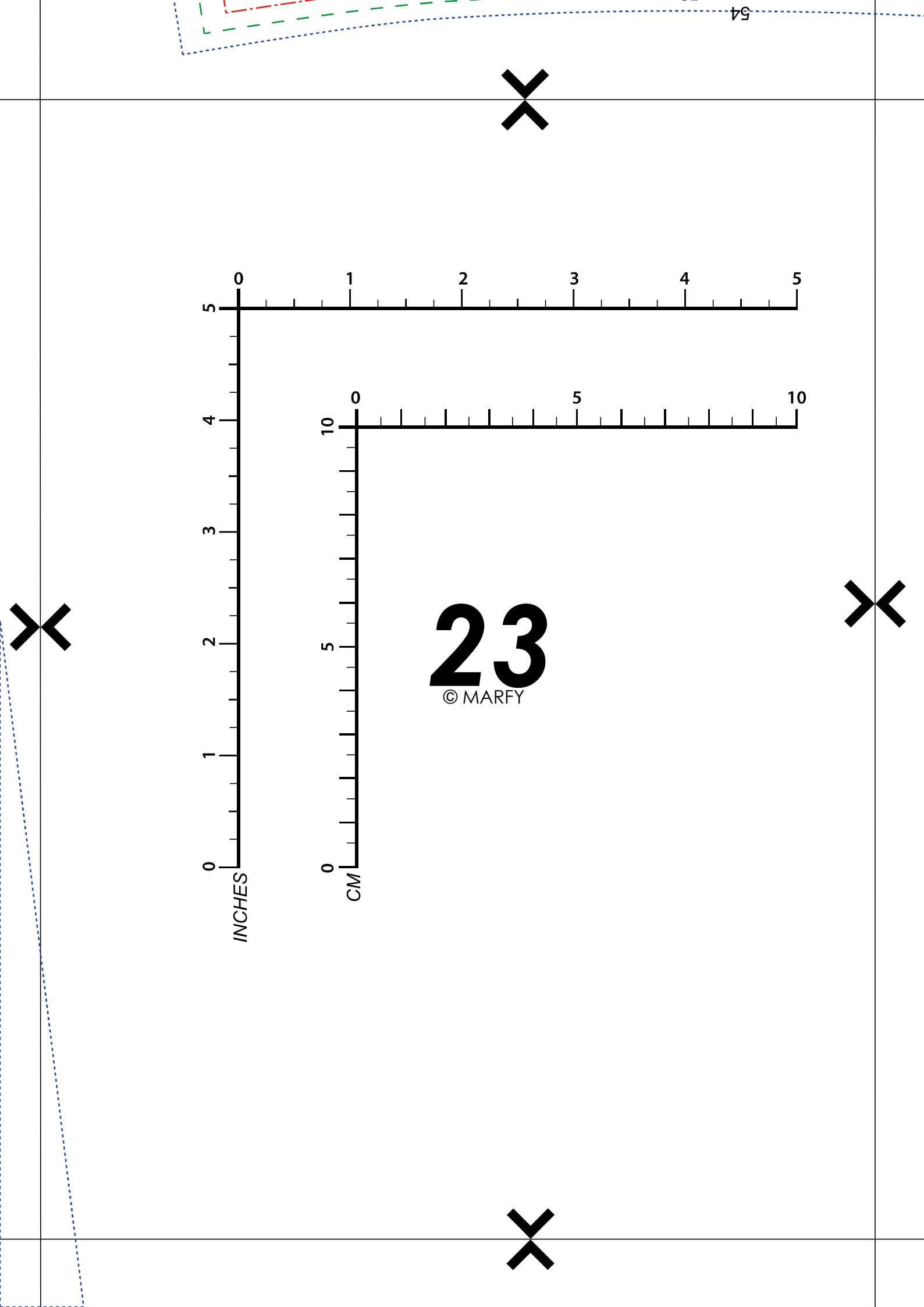
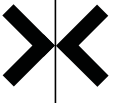


INCHES

CM

23

© MARFY





**24**  
© MARFY

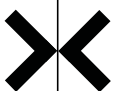


**25**  
© MARFY



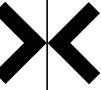


**26**  
© MARFY



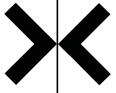
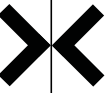


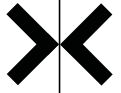
**27**  
© MARFY





**28**  
© MARFY





**29**  
© MARFY





X

X

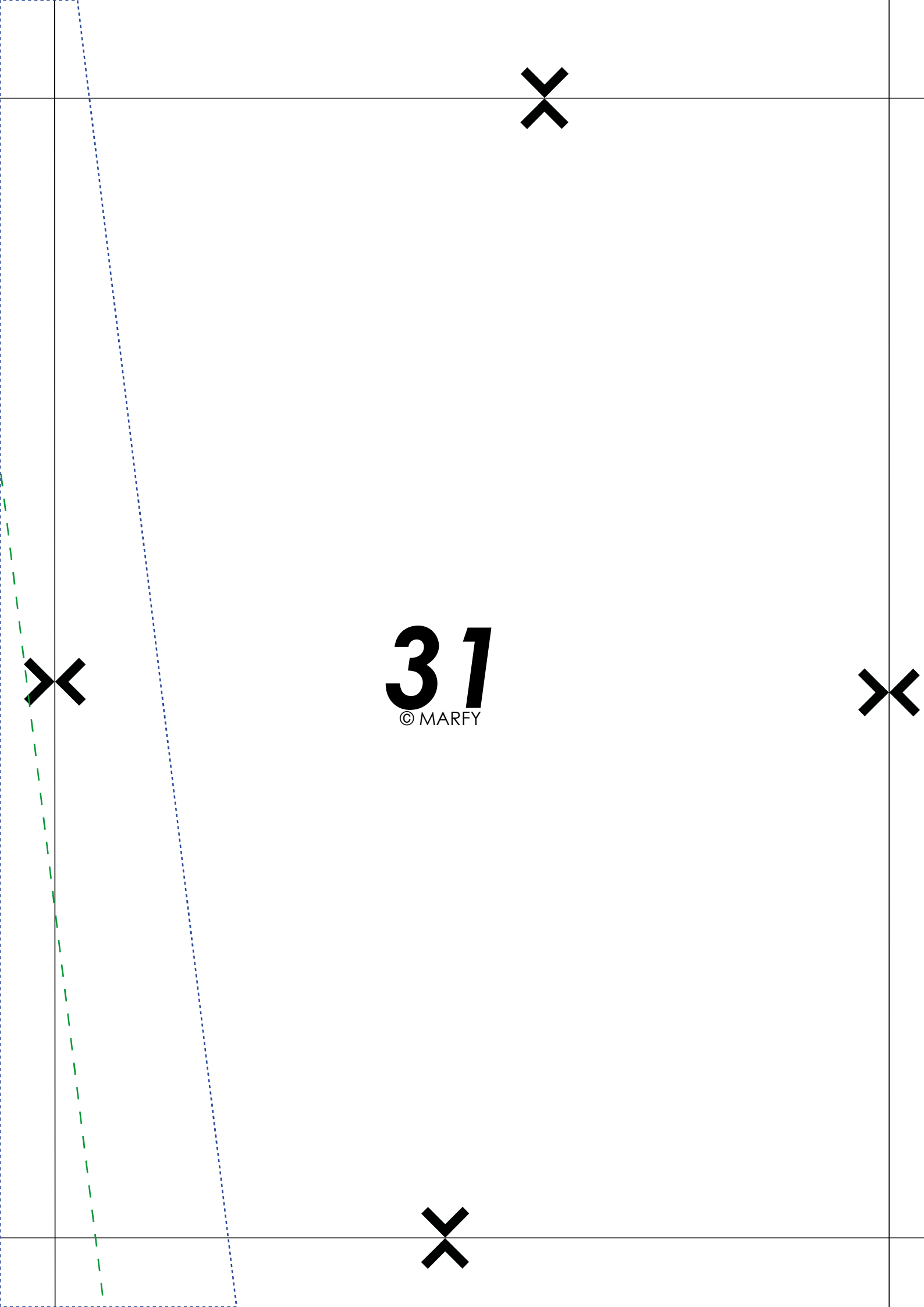
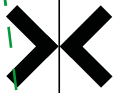
30  
© MARFY

X

X



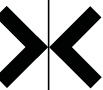
**31**  
© MARFY





**32**  
© MARFY





**33**  
© MARFY

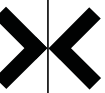
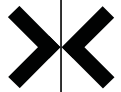


IN MANCANZA DI ALTEZZA DRITTOFILO CIMOSA

- En absence de l'hauteur lisière en droit de fil
- If not the hight, selvage on the grain
- Si falta altura orillo siguiendo el hilo
- Bei fehlender Höhe, Fadenlauf Webkanten



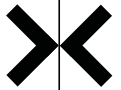
**34**  
© MARFY



**35**  
© MARFY

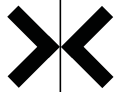


**36**  
© MARFY

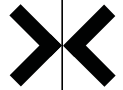
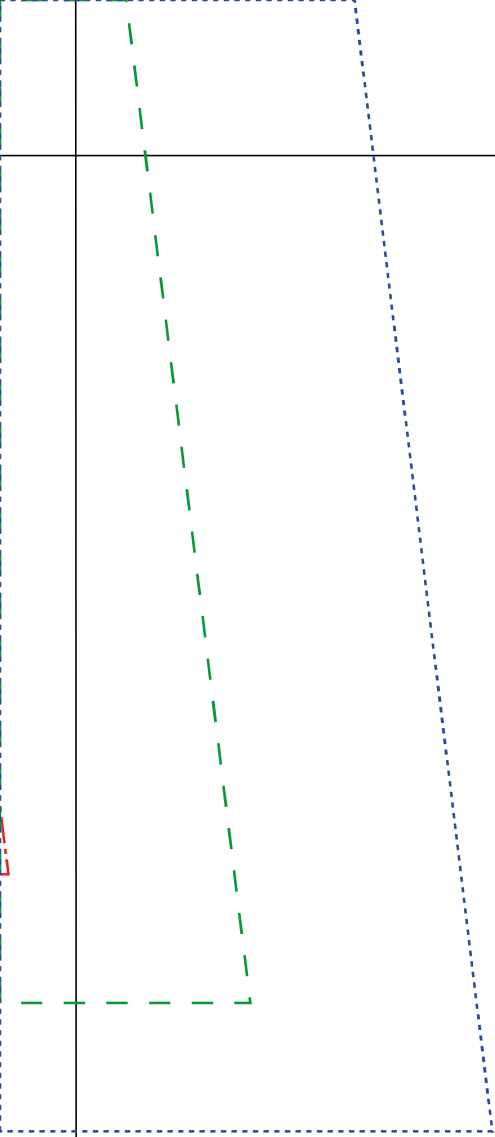


**37**  
© MARFY





**38**  
© MARFY



39  
© MARFY



**40**  
© MARFY