

## Istruzioni per la costruzione dei cartamodelli Marfy in PDF

1 - Stampa il file in formato **A4**. Prima di avviare la stampa ricorda di selezionare **100%** come scala della pagina, altrimenti il modello viene alterato.

2 - Rifila con le forbici il bordo destro e il bordo inferiore lungo la linea continua, in modo tale che la punta di ogni freccia sia a filo del margine, ed unisci i pezzi con il nastro adesivo facendo combaciare le frecce. Per maggior praticità nell'accostare i fogli, non tagliare il bordo sinistro e superiore del foglio, in modo tale che un lato abbia un margine di appoggio.

3 - Unisci tutte le pagine seguendo l'ordine numerico del prospetto in prima pagina, facendo sempre combaciare su ogni lato le punte delle frecce e le linee del cartamodello.

4 - Una volta che il grafico è completo, ritaglia o ricalca i pezzi singoli su carta velina seguendo la linea della taglia scelta.

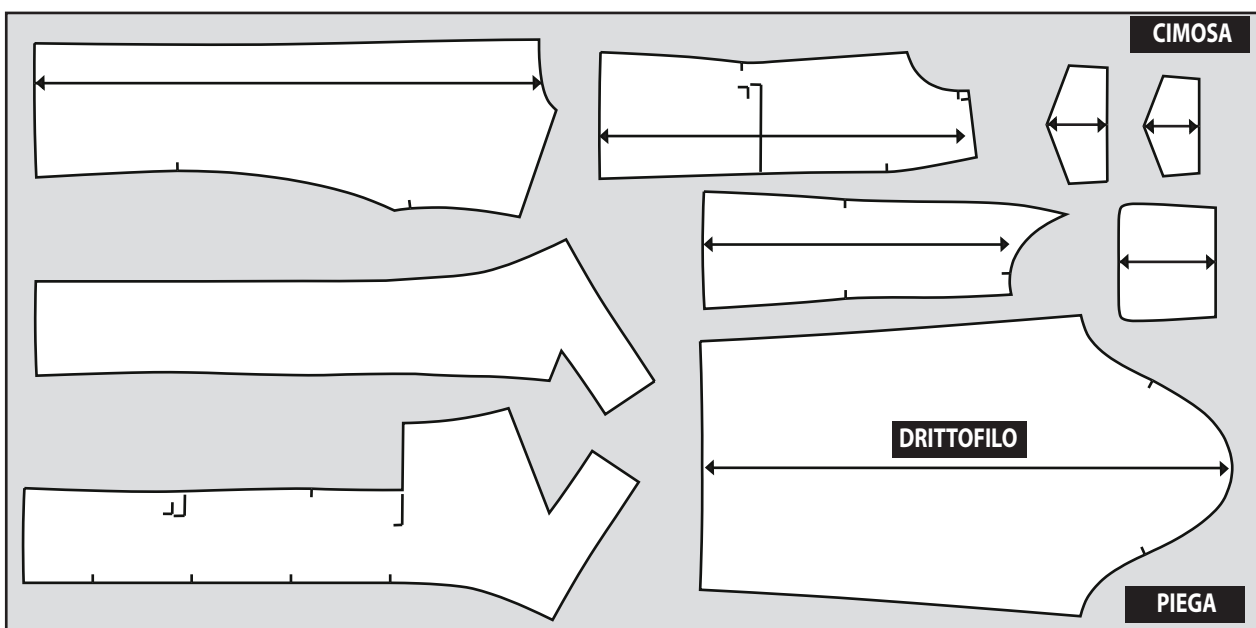
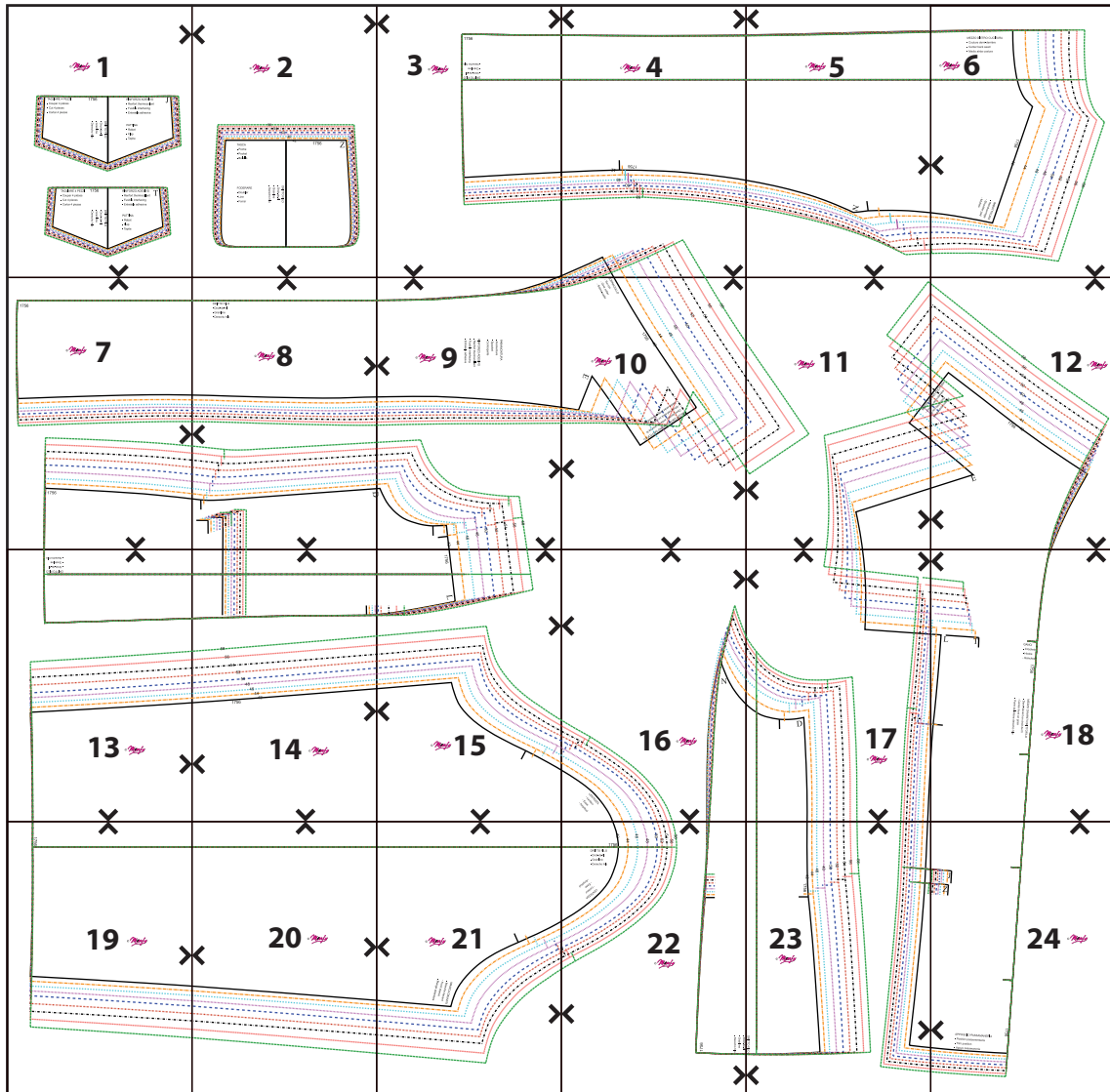
5 - Procedi alla posa su tessuto per il taglio.

6 - Se desideri fare delle personalizzazioni sul cartamodello consulta il nostro [PDF dedicato](#).

**L'utilizzo di questo cartamodello deve essere per uso personale. E' vietato l'utilizzo industriale. Ogni riproduzione anche parziale è vietata. Tutti i diritti sono riservati.**

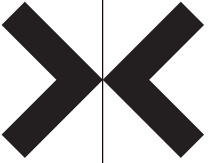
© Marfy S.r.l.

# SCHEMA COMPOSIZIONE FOGLI CARTAMODELLO *Manfy* N°1756



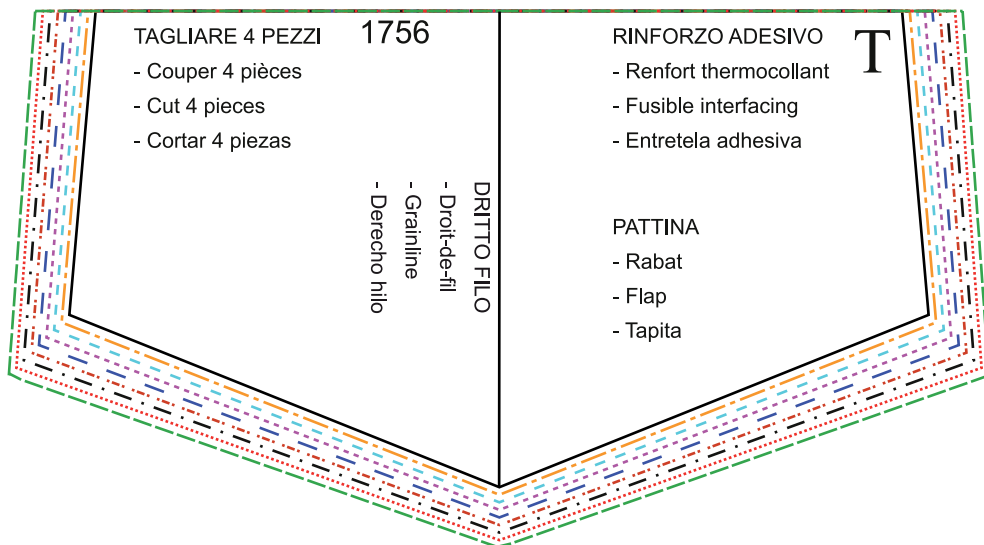
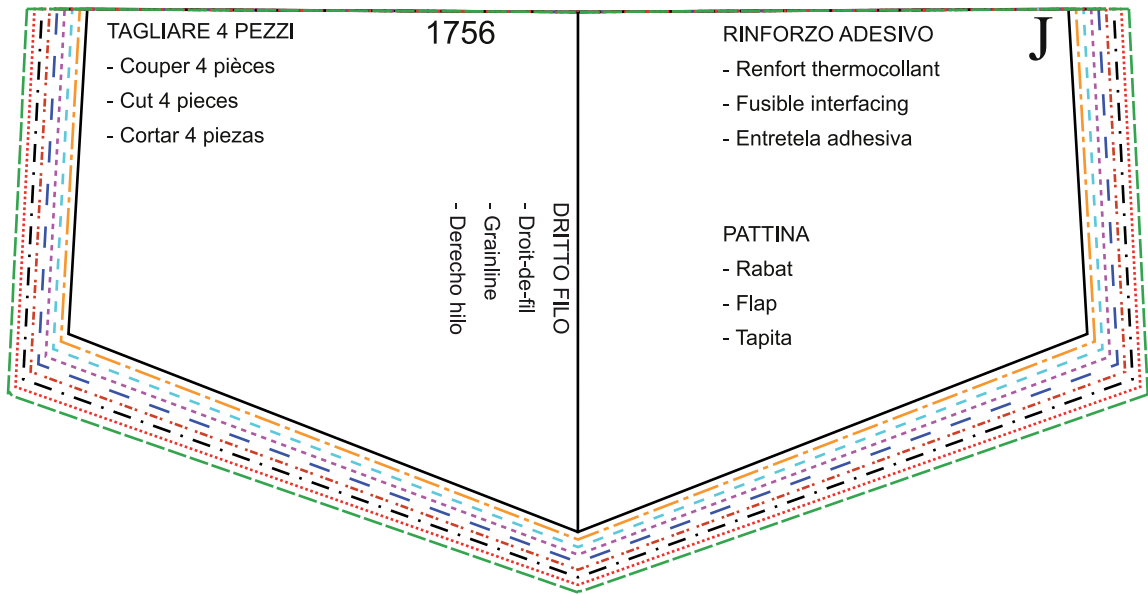
## PIAZZAMENTO CONSIGLIATO SU TESSUTO

Nota: il piazzamento è un suggerimento e dipende dall'altezza del tessuto. Questo piazzamento è stato studiato su tessuto alto mt. 1,40 piegato in doppio.



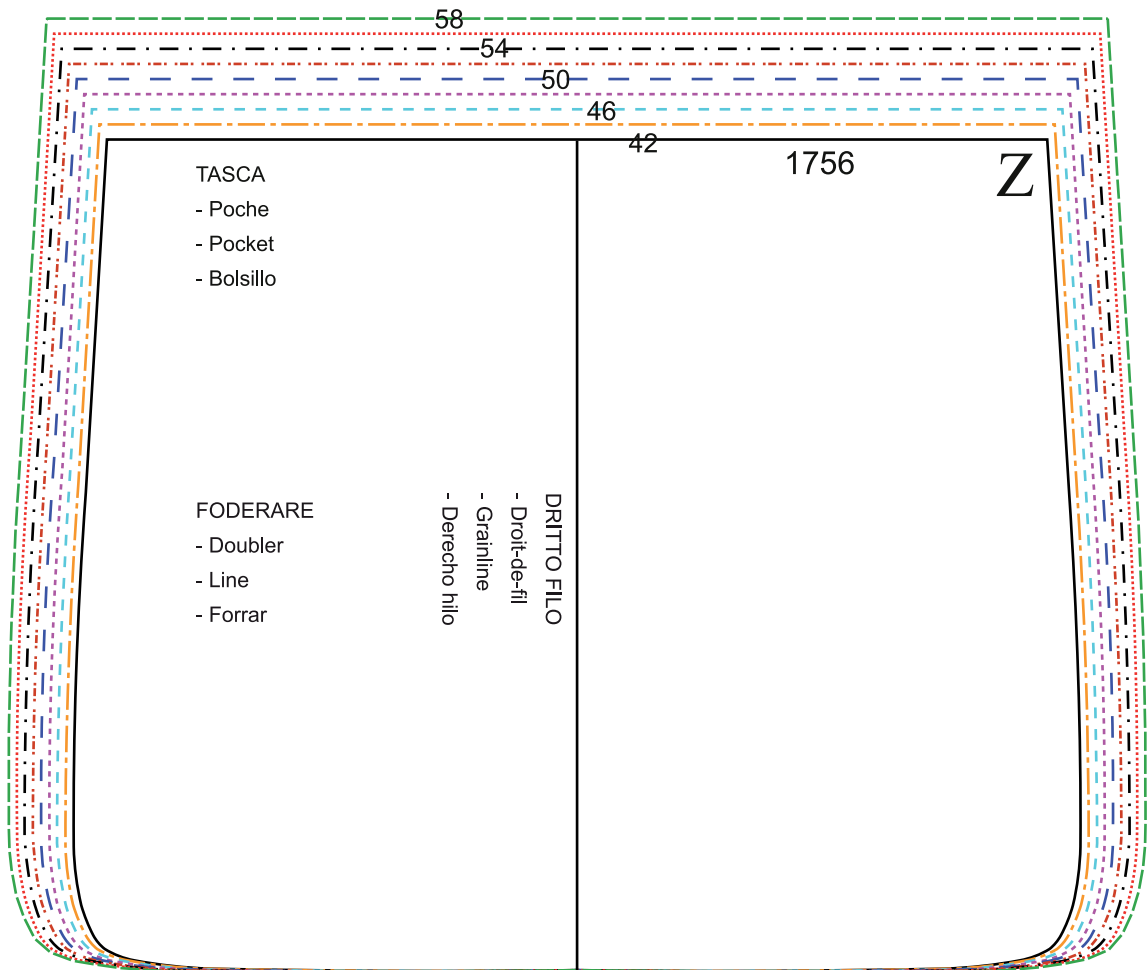
© *Manfy*

# 1



© *Manfy*

2

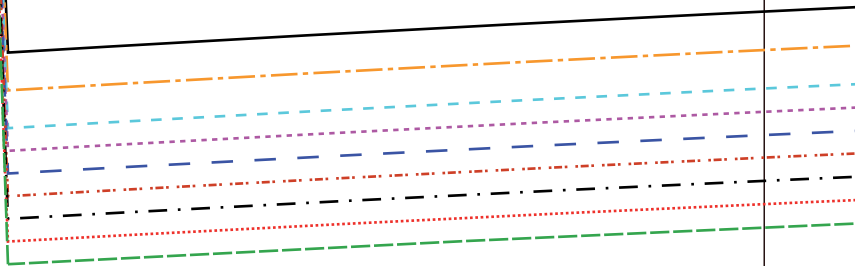


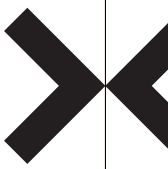
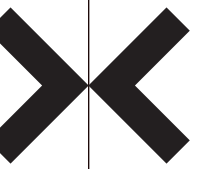
3

© *Manfy*

1756

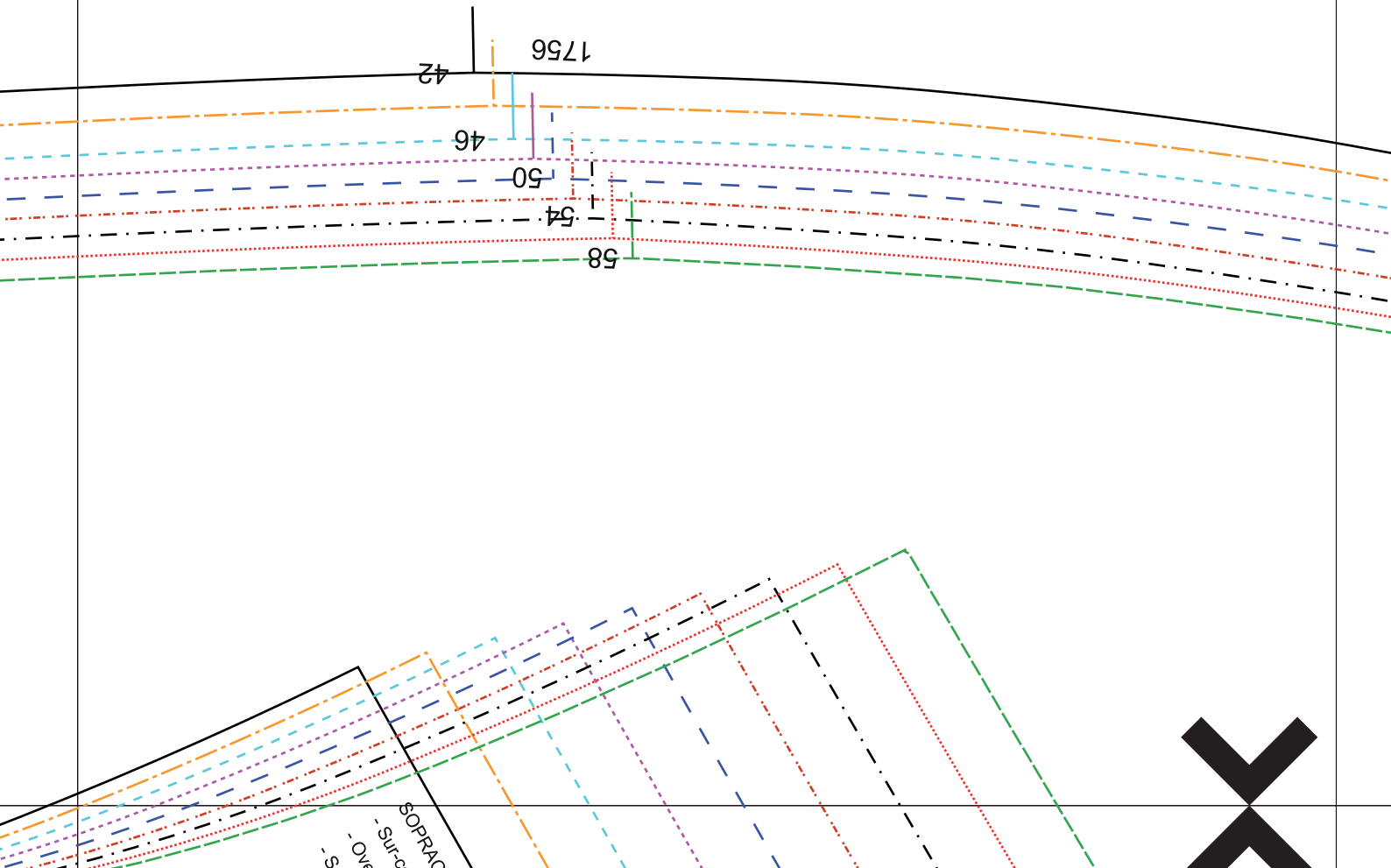
Dritto Filo  
- Droit-de-til  
- Grainline  
- Derecho hilo

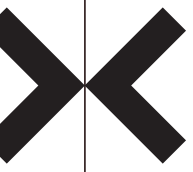




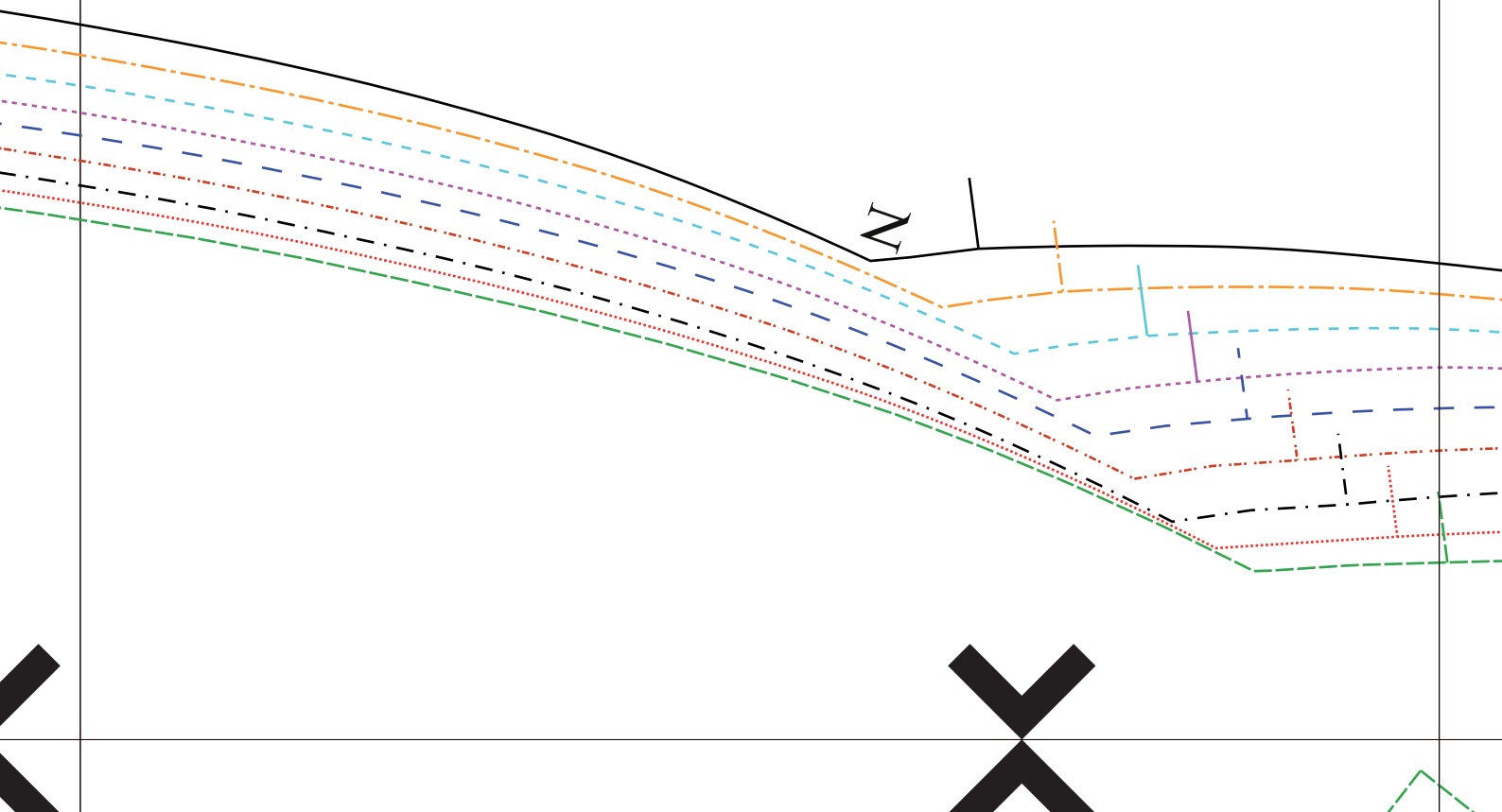
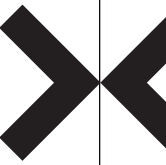
© *Manfy*

# 4





© *Marfy* 5



MEZZO DIETRO CUCITURA

- Couture d'arrièr
- Center back seam
- Medio atràs costura

© *Manfy*

6

1756

42

44

46

48

50

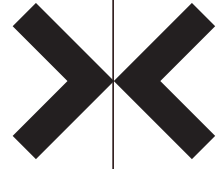
52

54

56

58

IMBOTTITURA  
- Rembourrage  
- Shoulder pad  
- Mullido



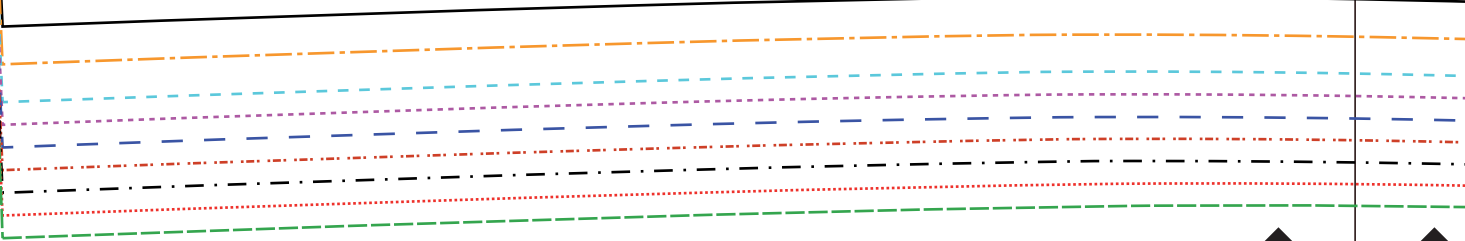




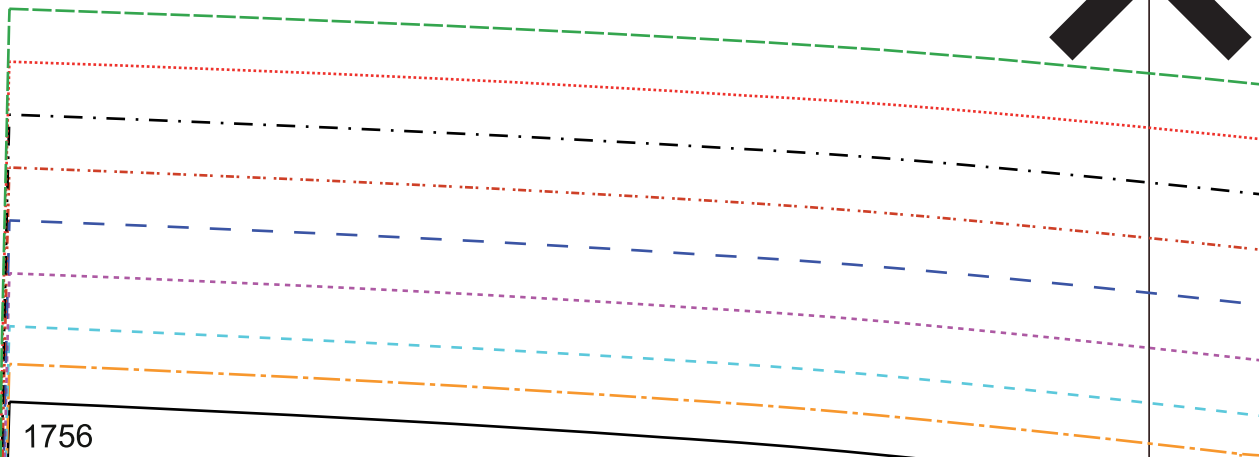
1756

© *Manfy*

7



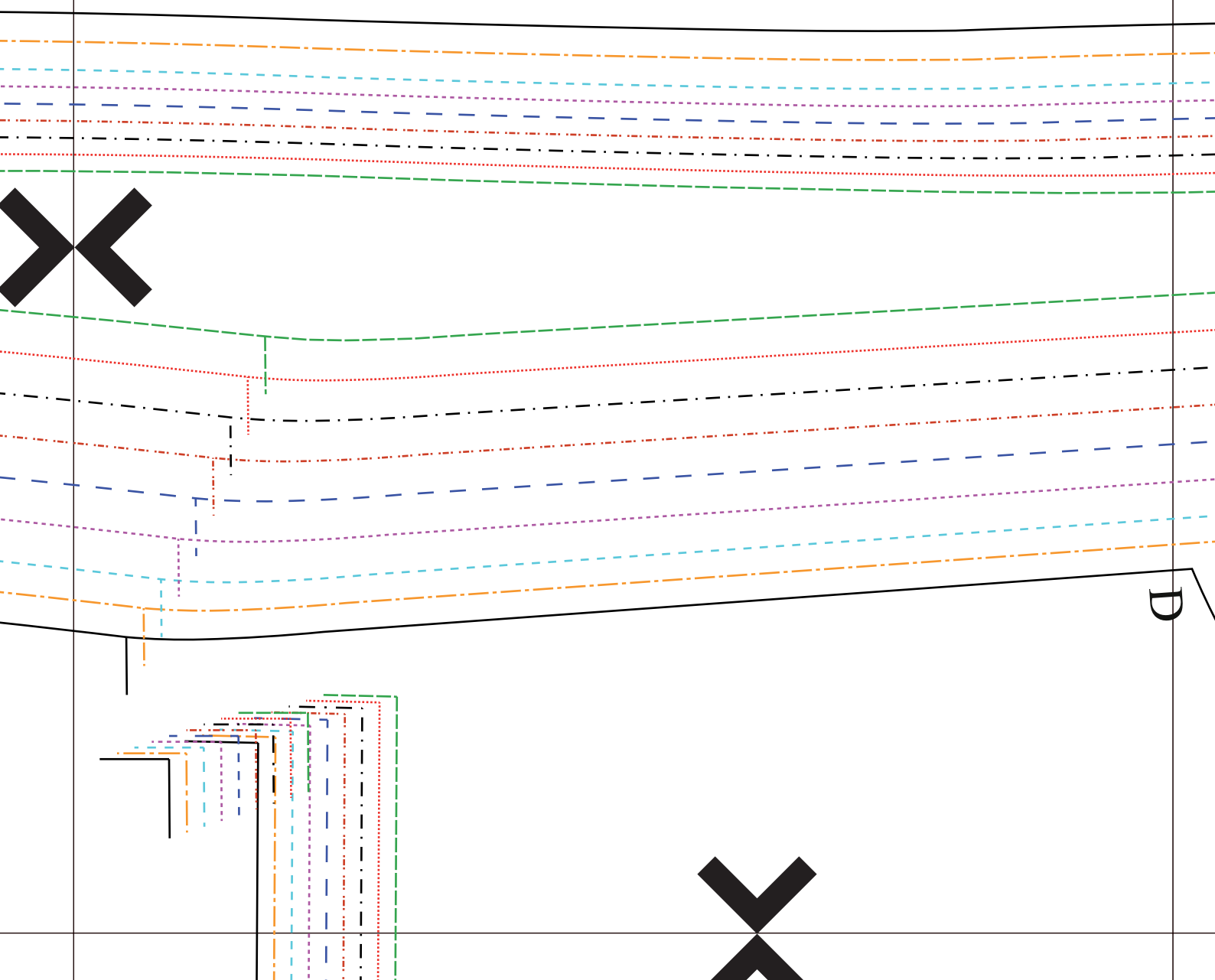
1756

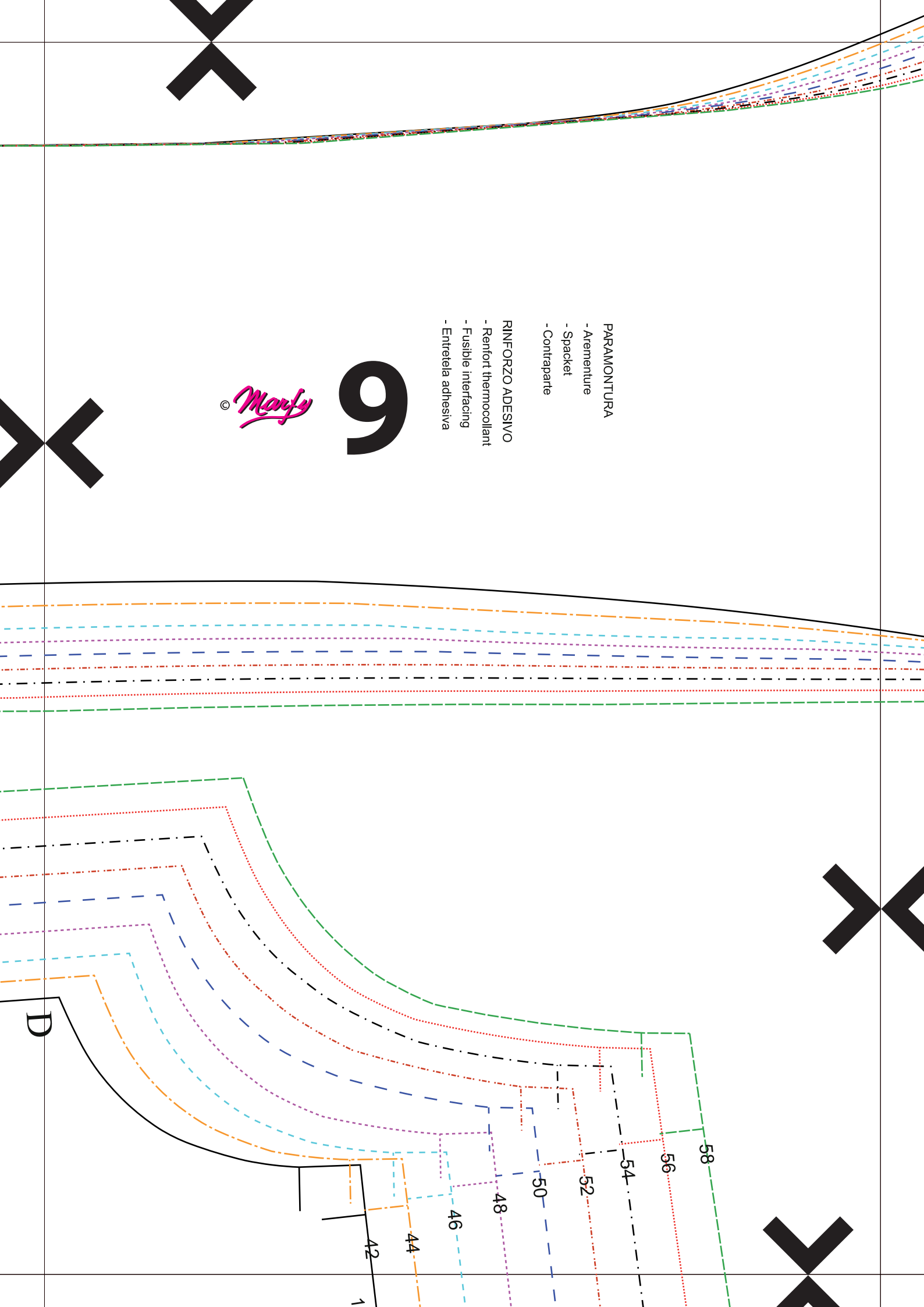


DRITTO FILO

- Droit-de-fil
- Grainline
- Derecho hilo

© *Manfy* 8





6



SOPRACOLLO  
- Sur-col  
- Over collar  
- Sobre-cuello

1756

© *Marfy*

# 10

E

MEZZO DIETRO INTERO DITTOFILO  
- Demi-derniere entier en droit de fil  
- Whole half-back on the grain  
- Medio atras entero derecho filo

52

54

56

58

48

46

44

42

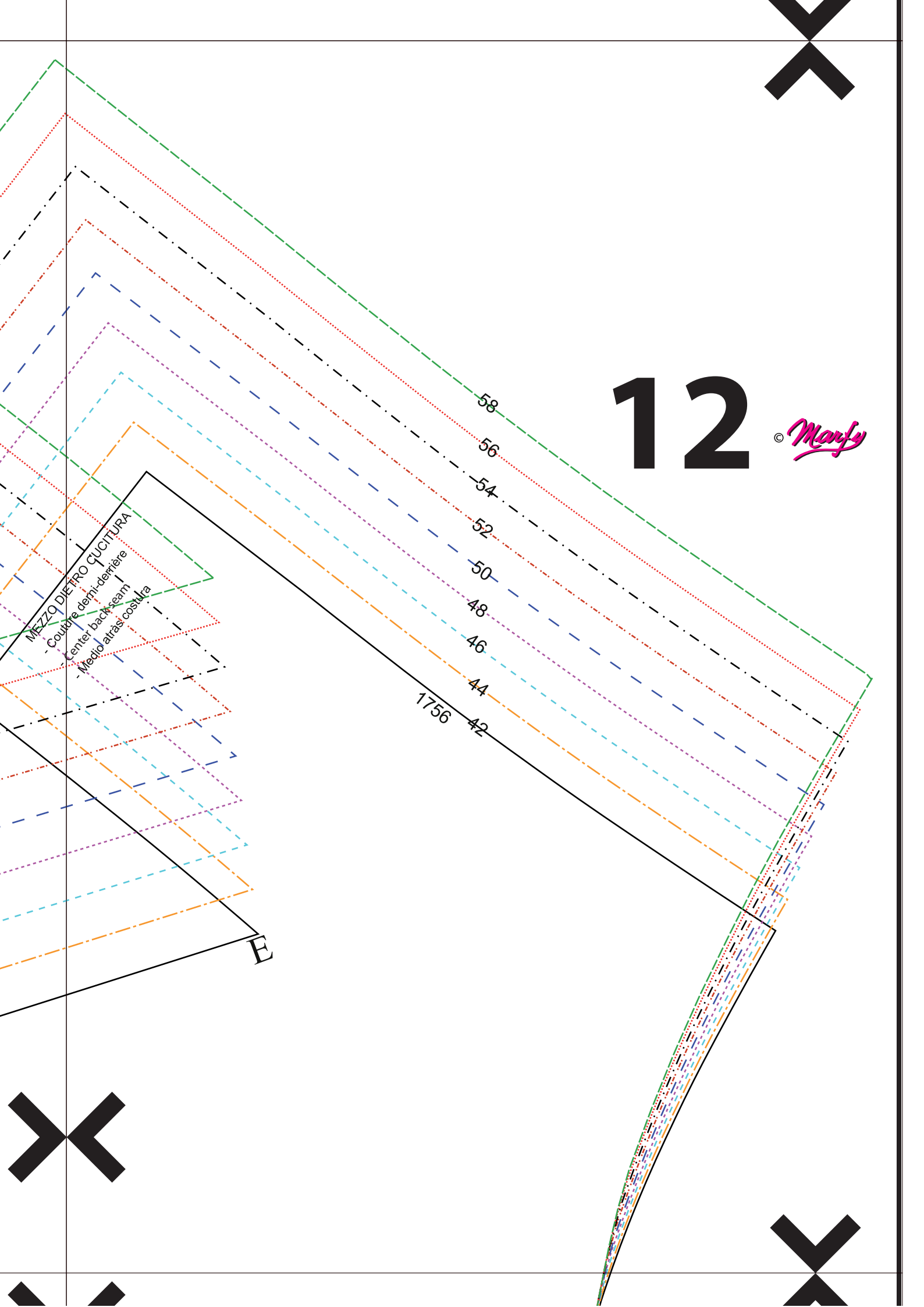
© *Manfy*

# 11

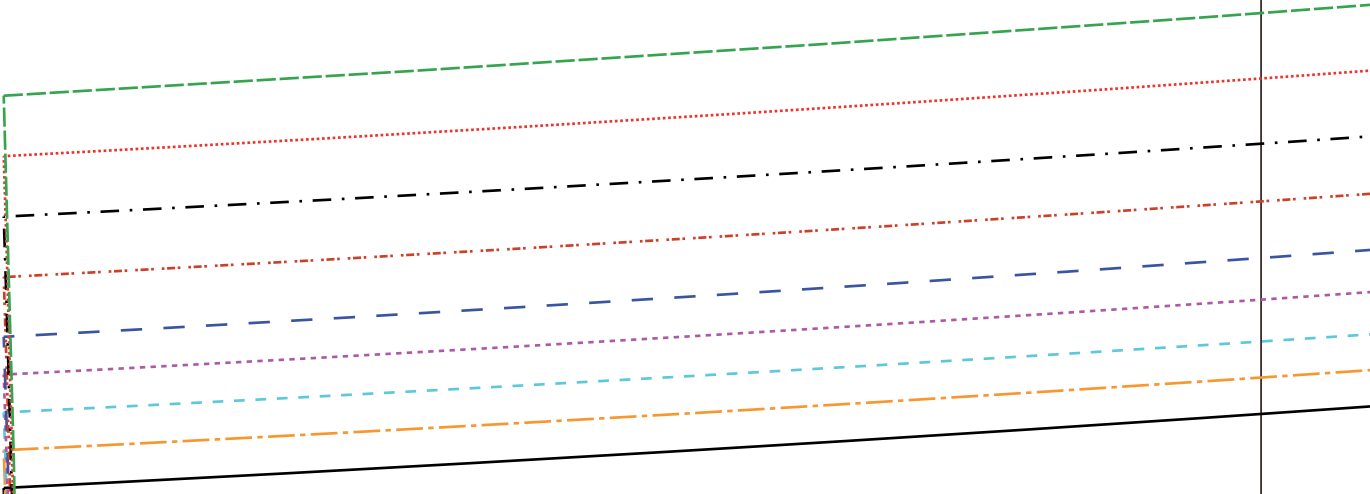
MEZZO DIETRO CUCITI  
- Couture demi-derr  
- Center back  
- Medio atr

# 12

© *Manfy*

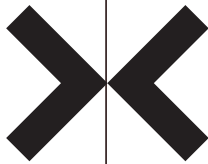


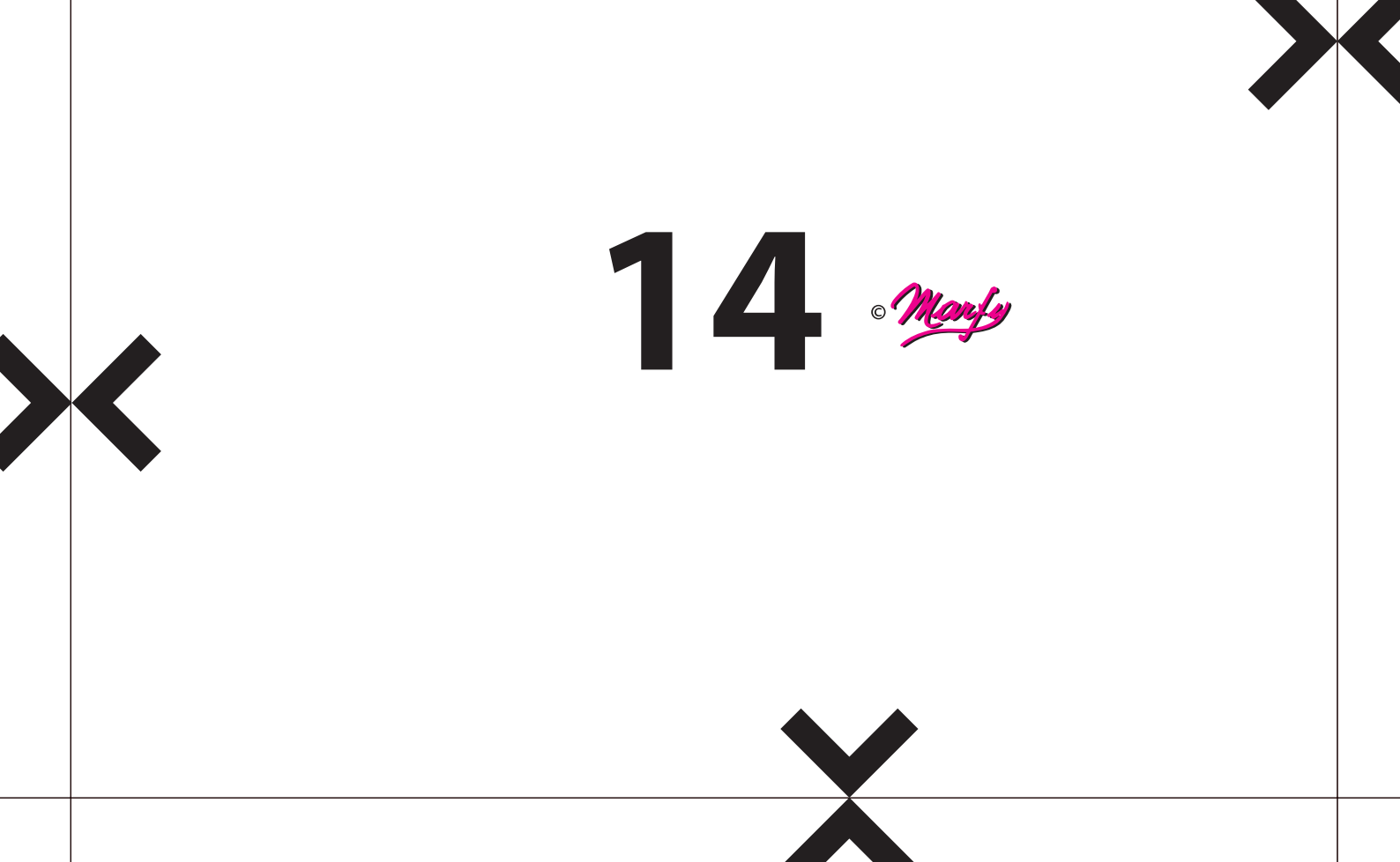
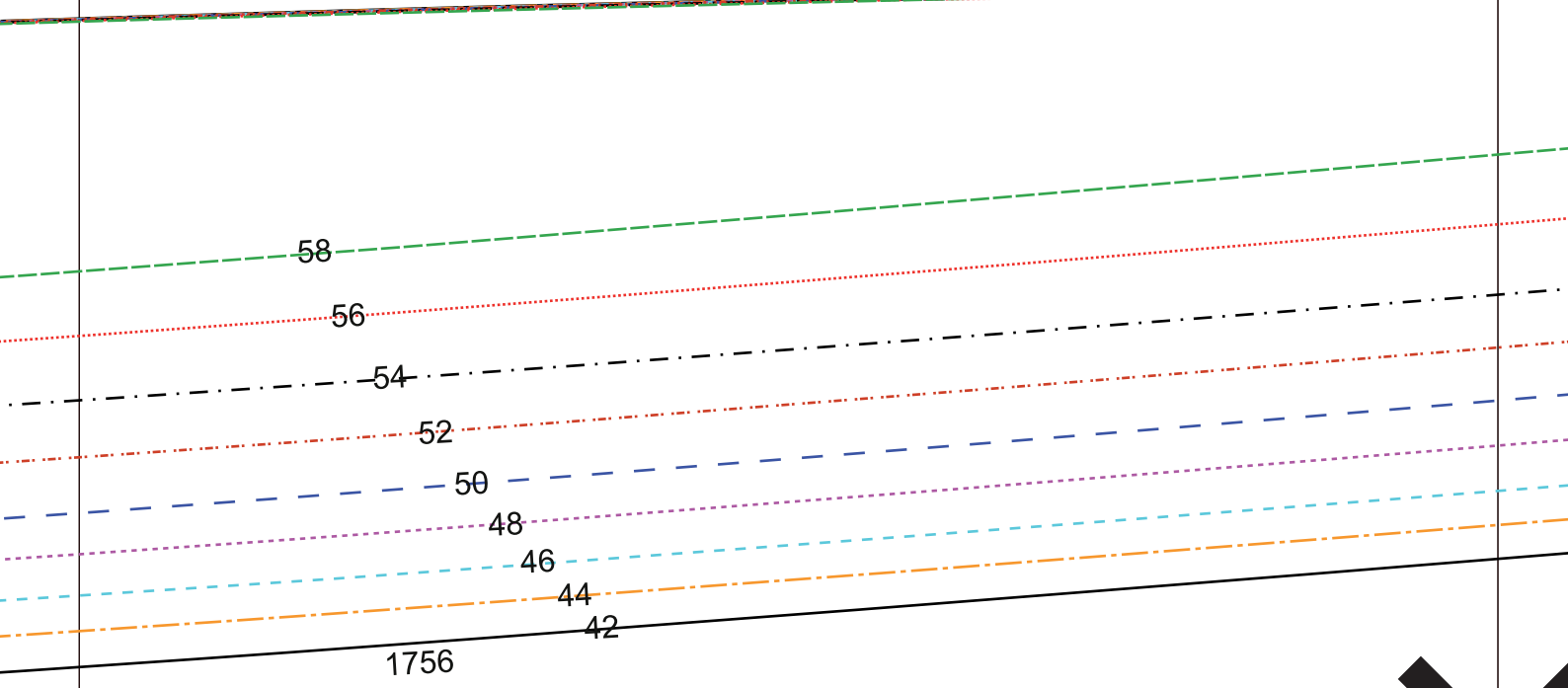
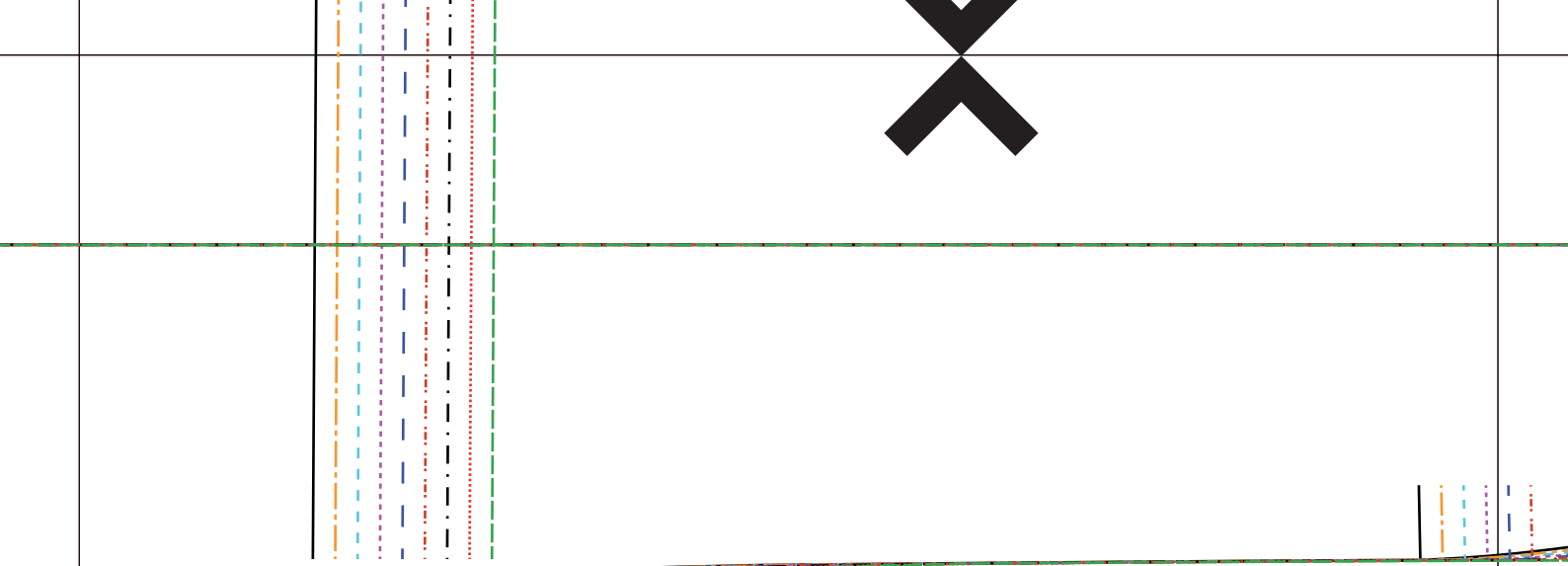
Dritto filo  
- Droit-de-til  
- Grainline  
- Derecho hilo



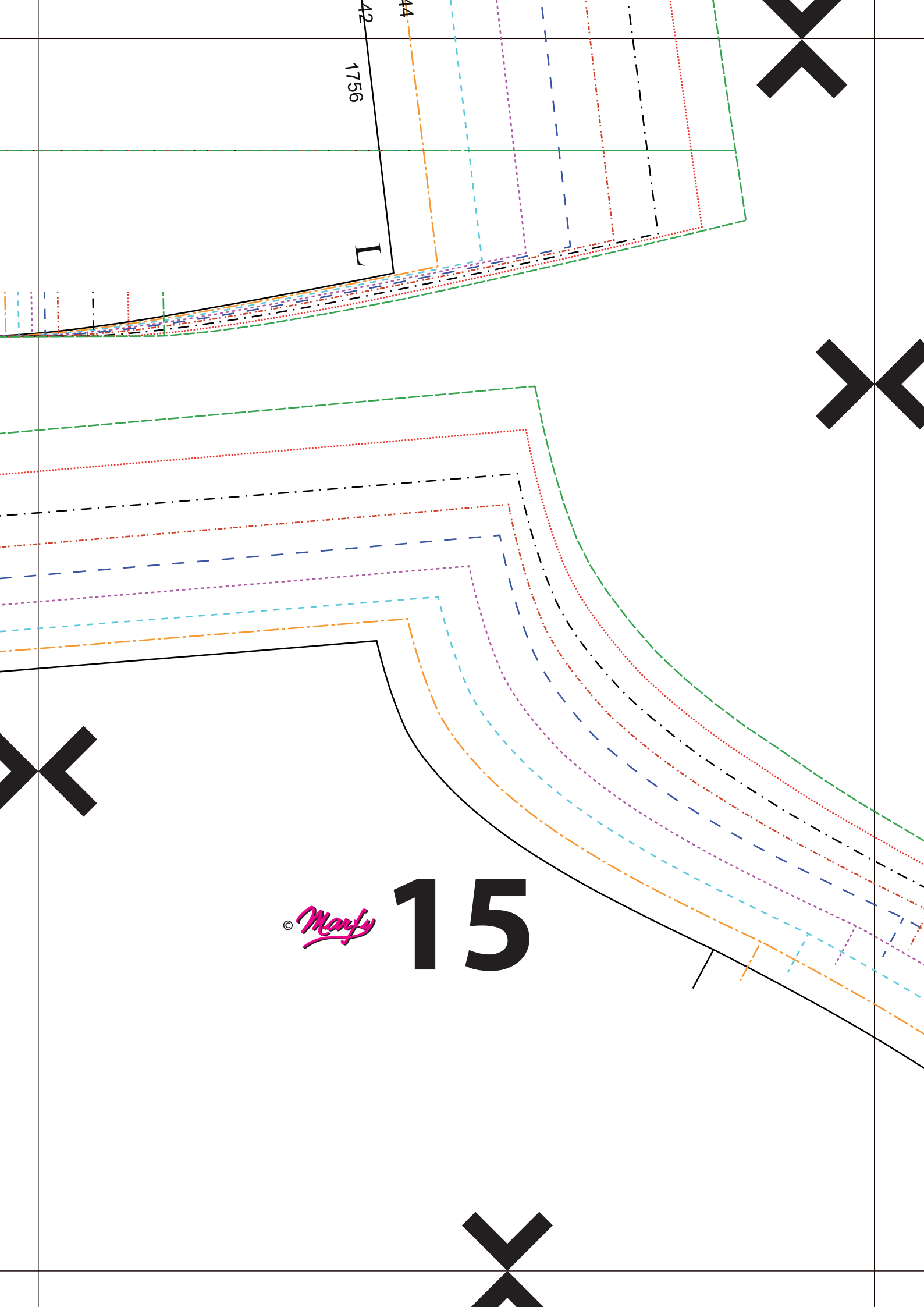
13

© *Marfy*









42  
1756  
L

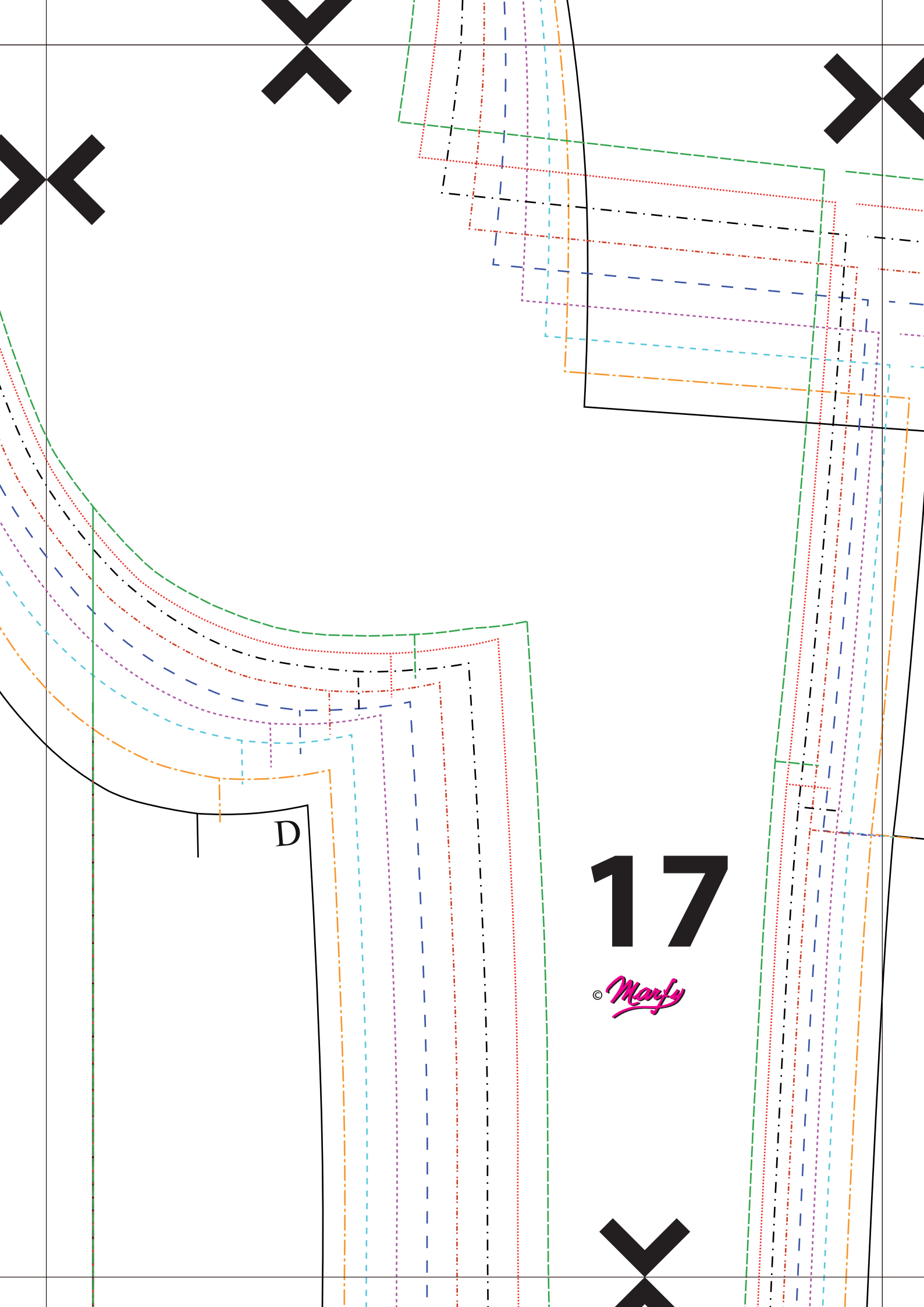
© *Manfy* **15**

# 16 *Manfy*

LENTEZZA  
- Lentur  
- Ease  
- Amplitud

N

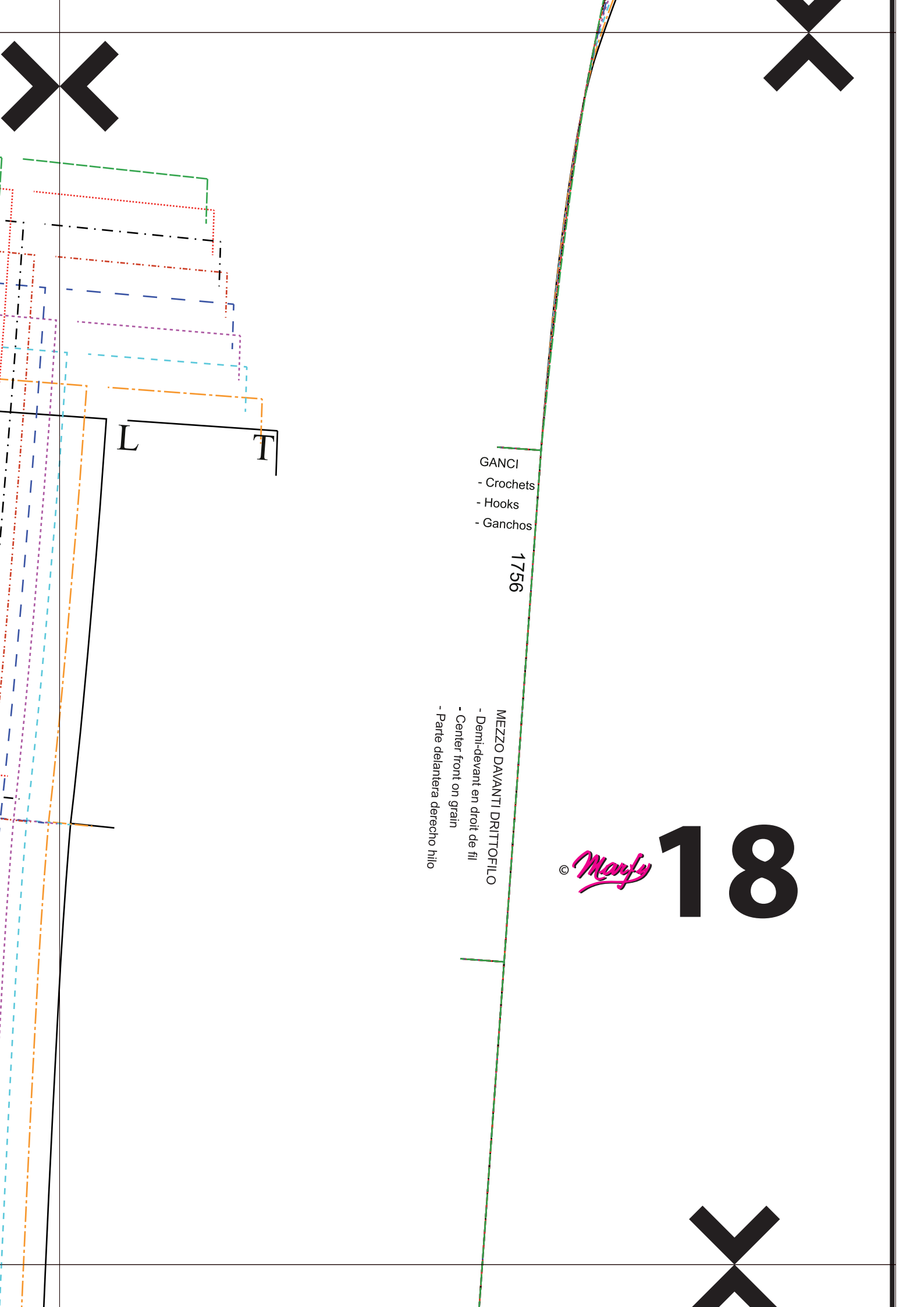




D

17

© Marfy



GANCI  
- Crochets  
- Hooks  
- Ganchos

1756

MEZZO DAVANTI DRITTOFILO  
- Demi-devant en droit de fil  
- Center front on grain  
- Parte delantera derecho hilo

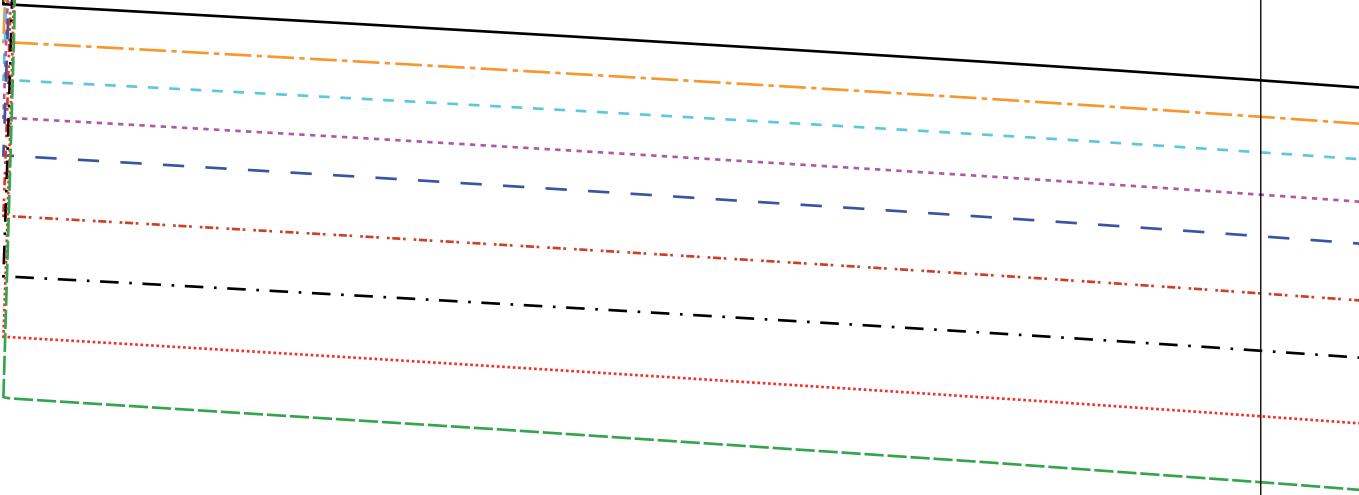
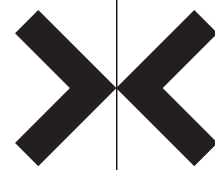
© *Manfy* **18**



1756

19

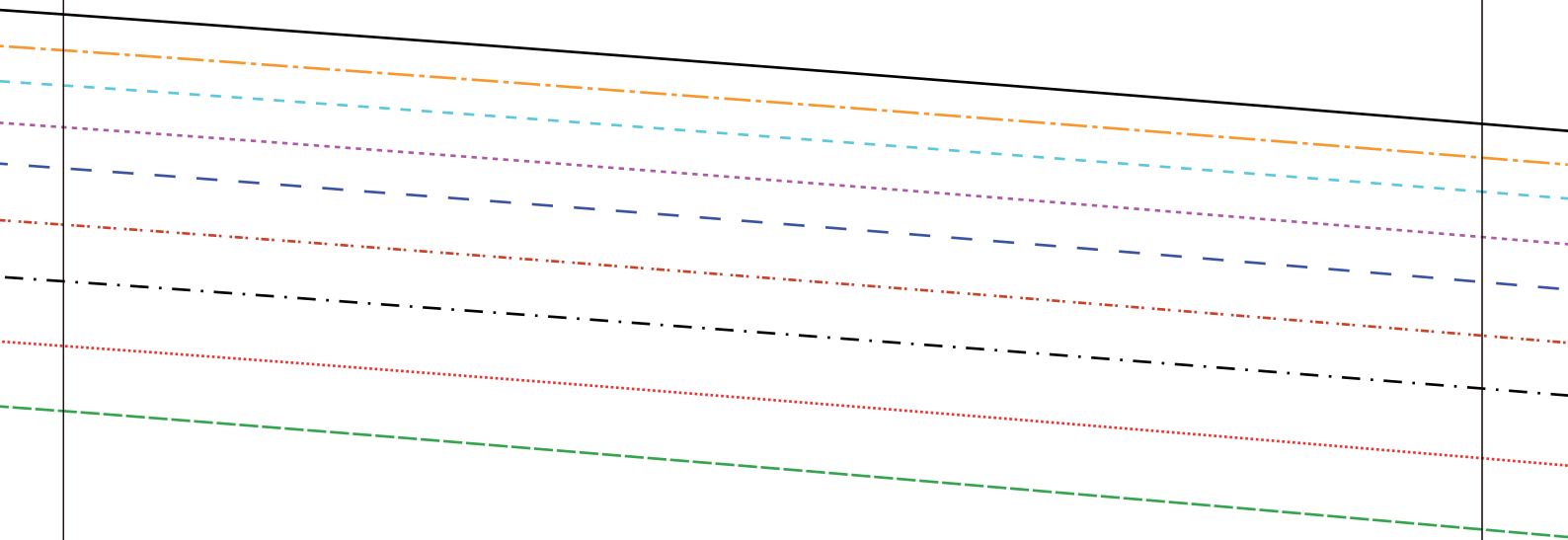
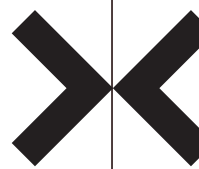
© *Manly*

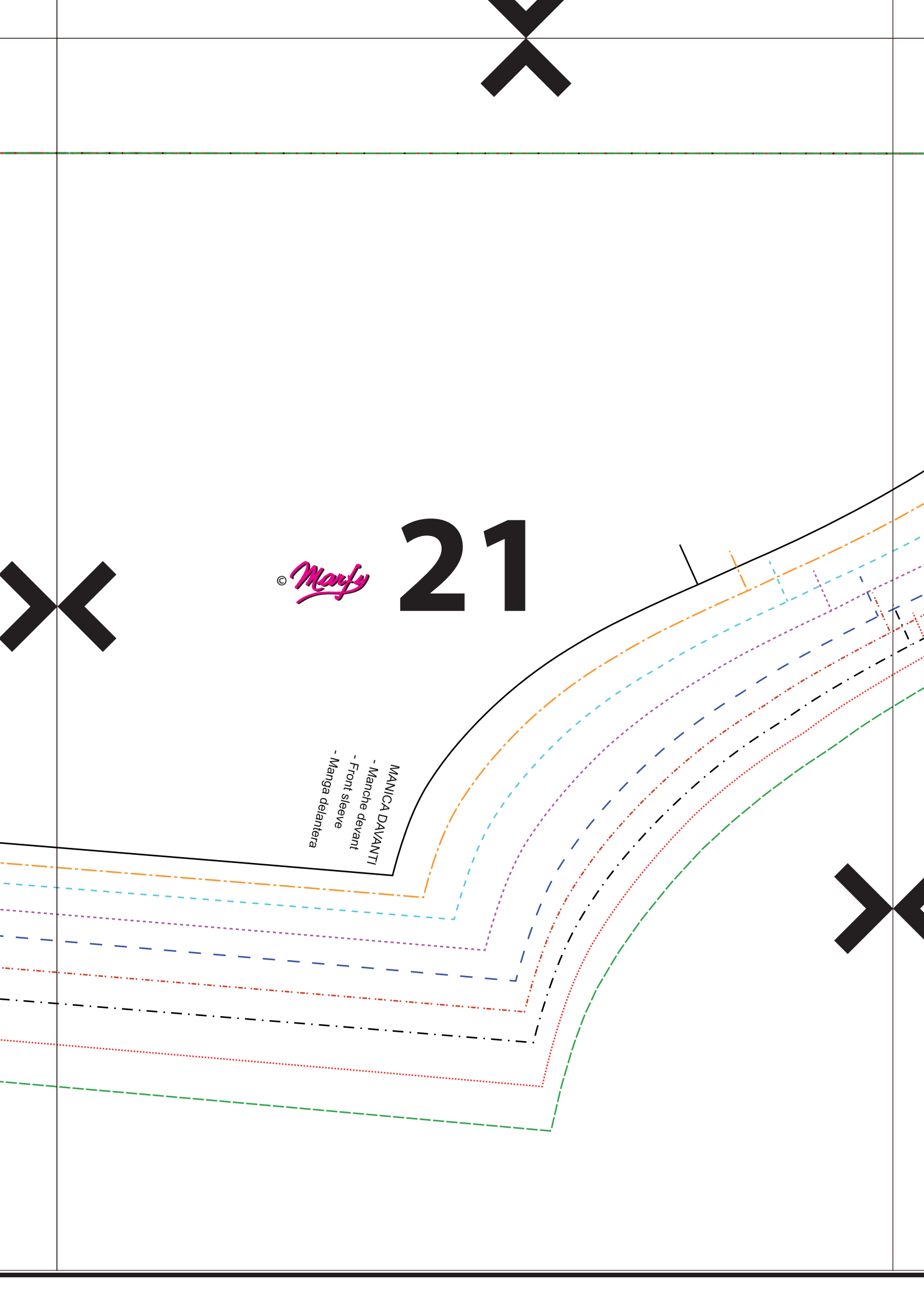




20

© *Manfy*

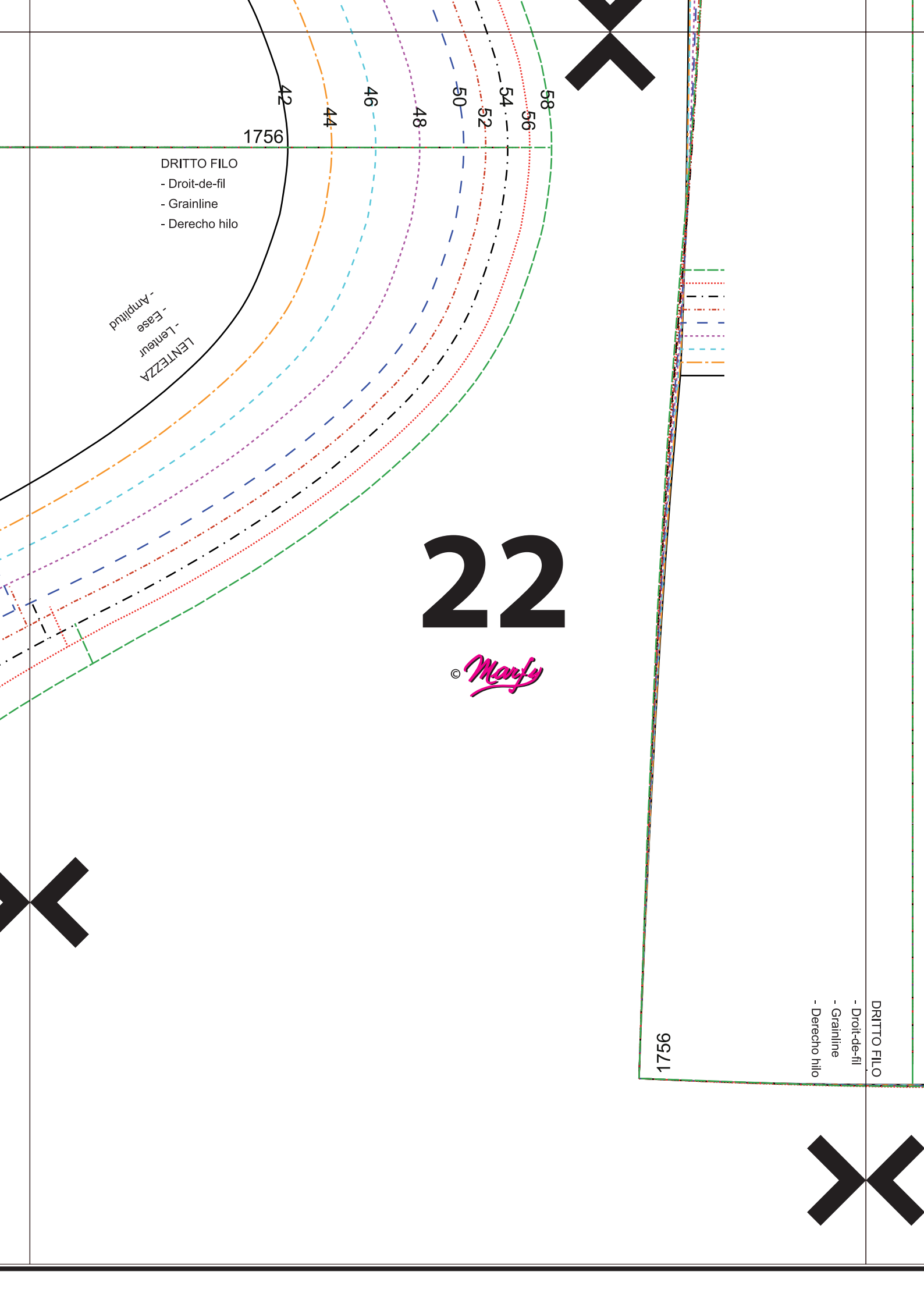




© *Marfy*

21

MANICA DAVANTI  
- Maniche davanti  
- Front sleeve  
- Manga delantera



DRITTO FILO  
- Droit-de-fil  
- Grainline  
- Derecho hilo

LENTEZZA  
- Lenteur  
- Ease  
- Amplitud

22

© Manfy

DRITTO FILO  
- Droit-de-fil  
- Grainline  
- Derecho hilo

1756

1756

42

44

46

48

50

52

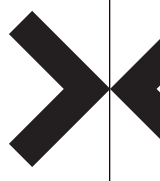
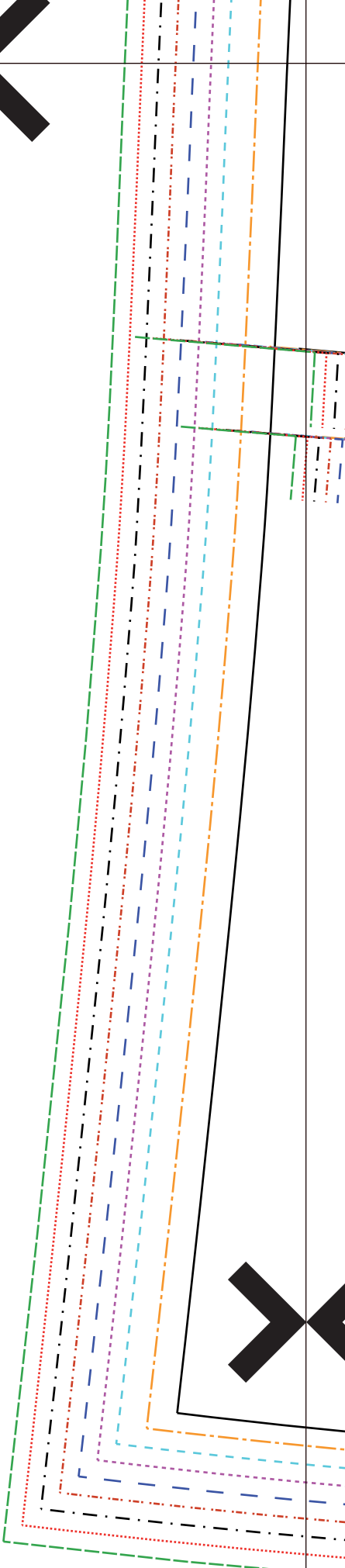
54

56

58

9511





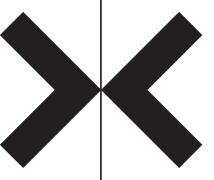
58  
56  
54  
52  
50  
48  
46  
44  
42  
1756

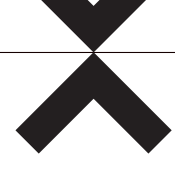
23

© *Manfy*

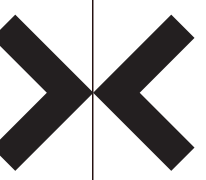
DRITTO FILO

- Droit-de-fil
- Grainline
- Derecho hilo





# 24



APPOGGIO PASSAMANERIA  
- Position passementeria  
- Trim position  
- Apoyo pasamaneria

1756

