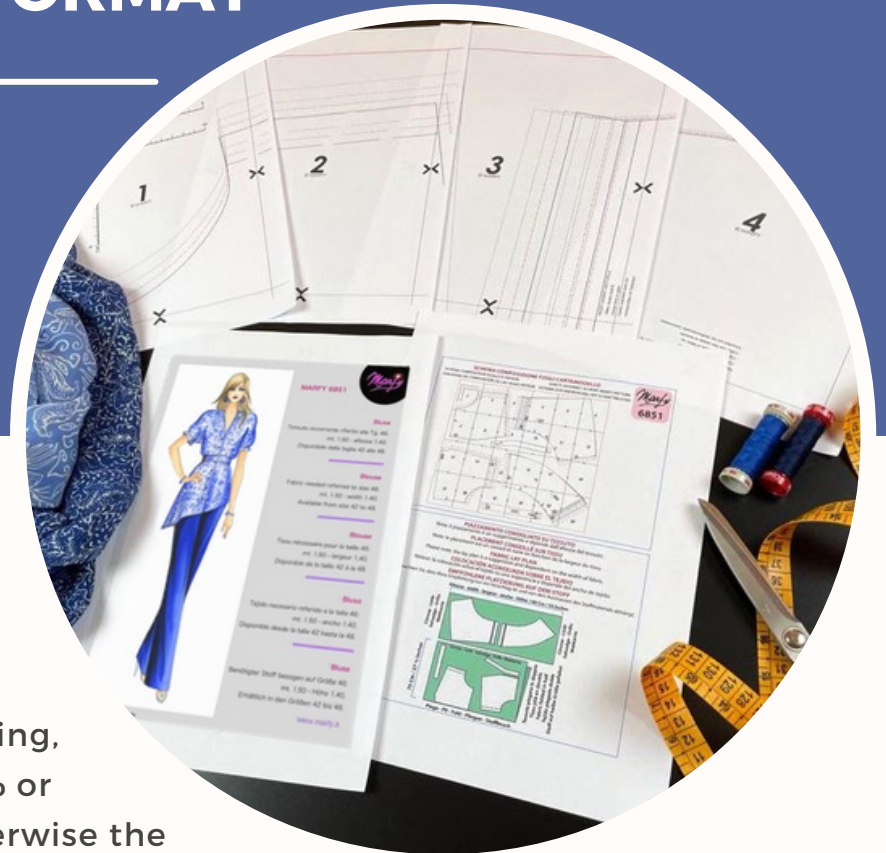


# ASSEMBLY INSTRUCTIONS FOR MARFY PATTERNS IN PDF FORMAT



1 - Print the file in **Letter** or **A4** format. Before starting the printing, please remember to select **100%** or "**Actual Size**" as page scale, otherwise the pattern will be altered. You can verify the correctness of the print size with the rulers printed on the pattern.

2 - Trim with scissors the right edge and the bottom edge along the solid line, so that the tip of each arrow is flush with the edge, and tape the pieces together making the arrows match. For ease of joining, do not cut the left and top edges of the sheet, so that one side always has a supporting edge.

3 - Join all the pages together following the numerical order of the chart on the front page, always matching the arrowheads and pattern lines on each side.

4 - Once the chart is complete, cut out or trace the individual pieces on onion paper following the line of the chosen size.

5 - Proceed to laying on fabric for cutting remembering that seam allowances and hems are not included.

Use of this pattern must be for personal use only. Industrial use is forbidden.  
Any reproduction, even partial, is forbidden. All rights reserved.