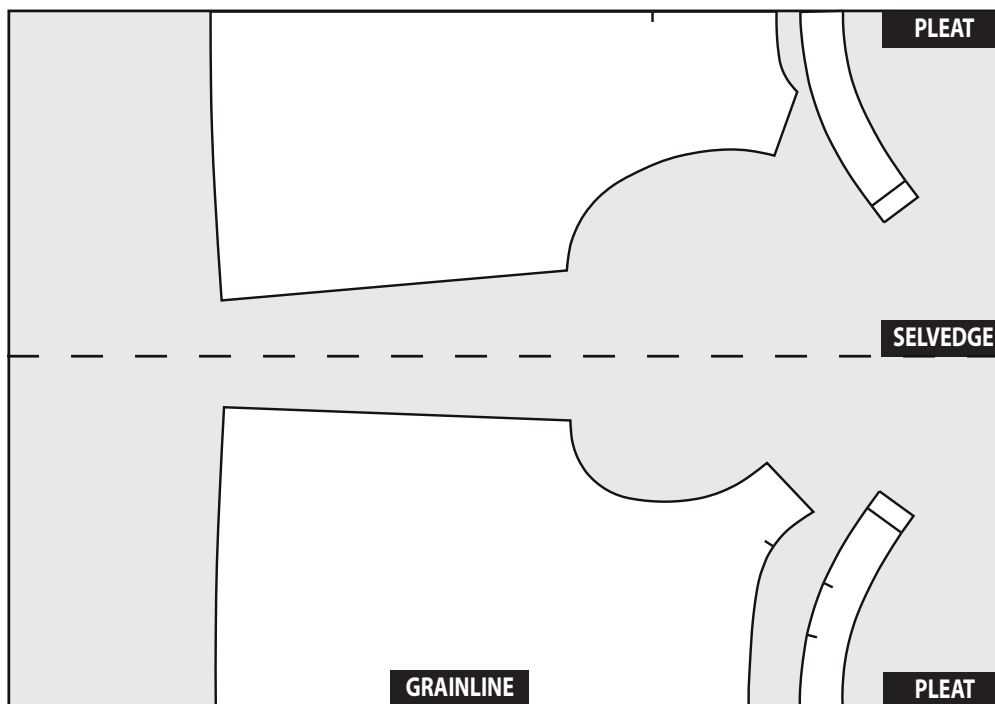
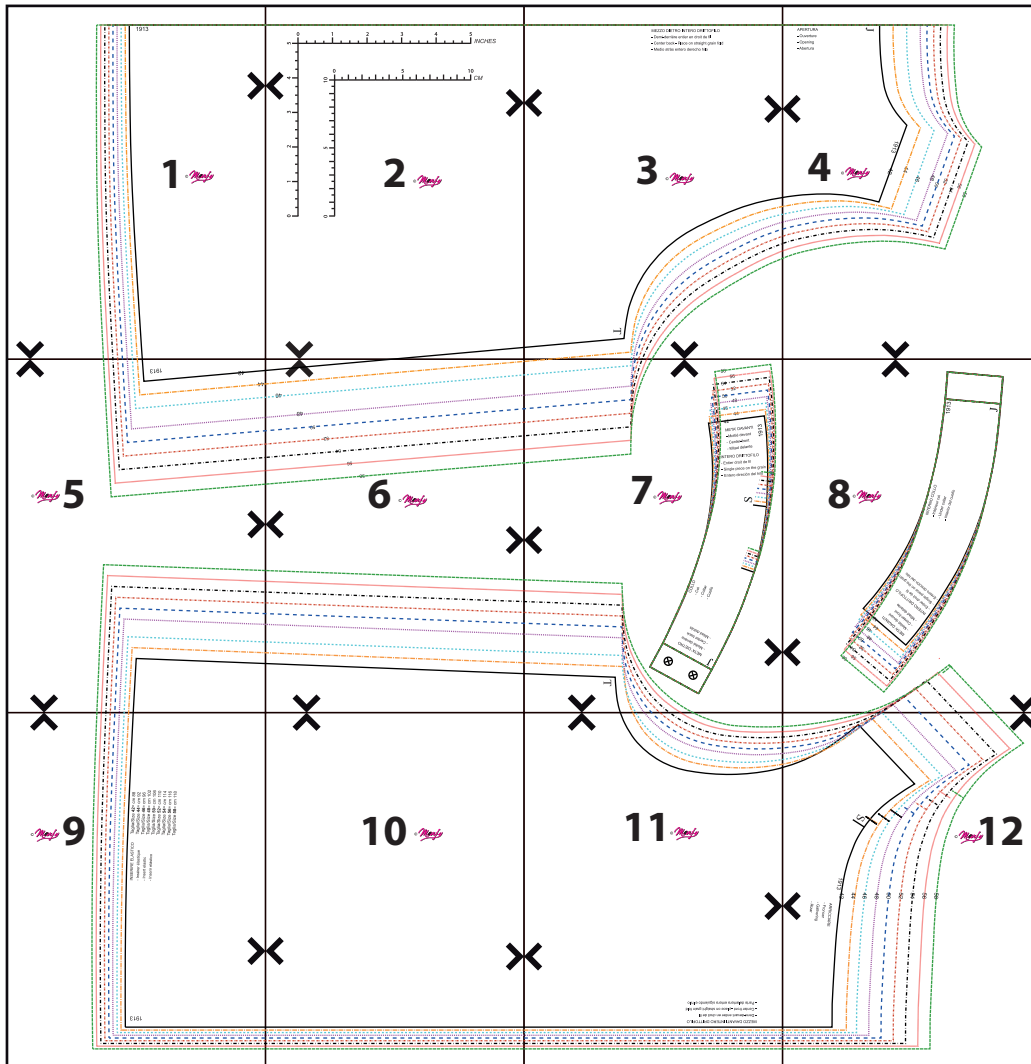


## **Print and cut tutorial for Marfy patterns in PDF format.**

- 1 - Print the file in size **Letter or A4**. Before start printing remember to select **100% or “Actual Size”** as scale of the page, otherwise pattern will be altered. You can check the right scale with the rulers that you find on pattern.
- 2 - Trim with scissors the right edge and the lower edge along the continuous line, so that the arrowheads are aligned with the edge, and join the pieces with adhesive tape matching arrows. For convenience in pulling the sheets, don't cut the left and upper edges, so that one side has a margin of support.
- 3 - Join all pages following the numerical order of the prospect in the first page, be sure that arrowheads match up in each side as well as the lines of the pattern.
- 4 - When the graph will be complete, cut or trace single pieces on onion paper following the line of the chosen size.
- 5 – Now the pattern is ready to be placed on fabric for the cut.
- 6 - If you want to customize the pattern please look at our [specific PDF](#).

**This pattern is only for personal use. It is forbidden the industrial use.  
Any reproduction, even partial, is prohibited. All rights reserved.**

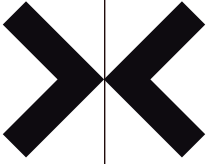
© Marfy S.r.l.



**FABRIC LAY PLAN**

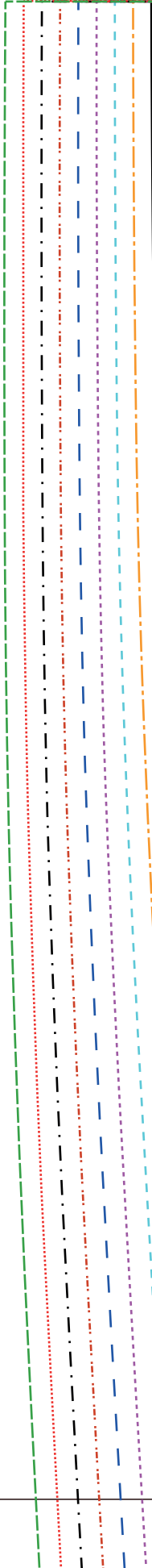
Please note: the lay plan is a suggestion and dependent on the width of fabric. This lay plan was created on fabric mt. 1.40 wide folded in double.

1913



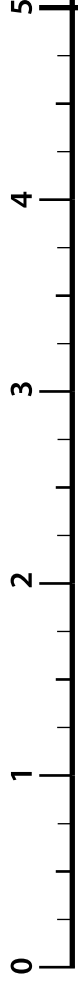
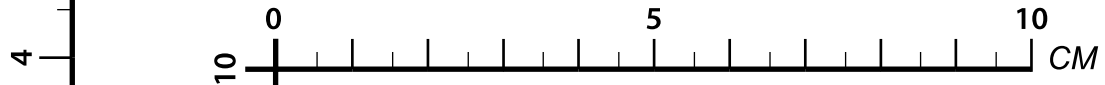
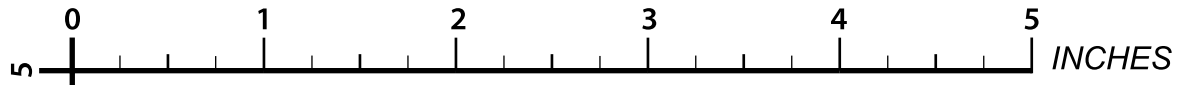
1

© *Manfy*

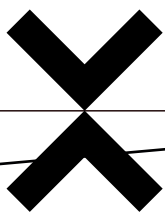
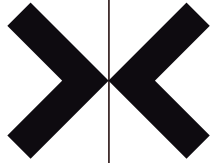
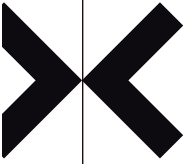


1913

42

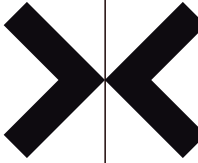
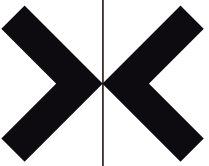


2 © Marfy



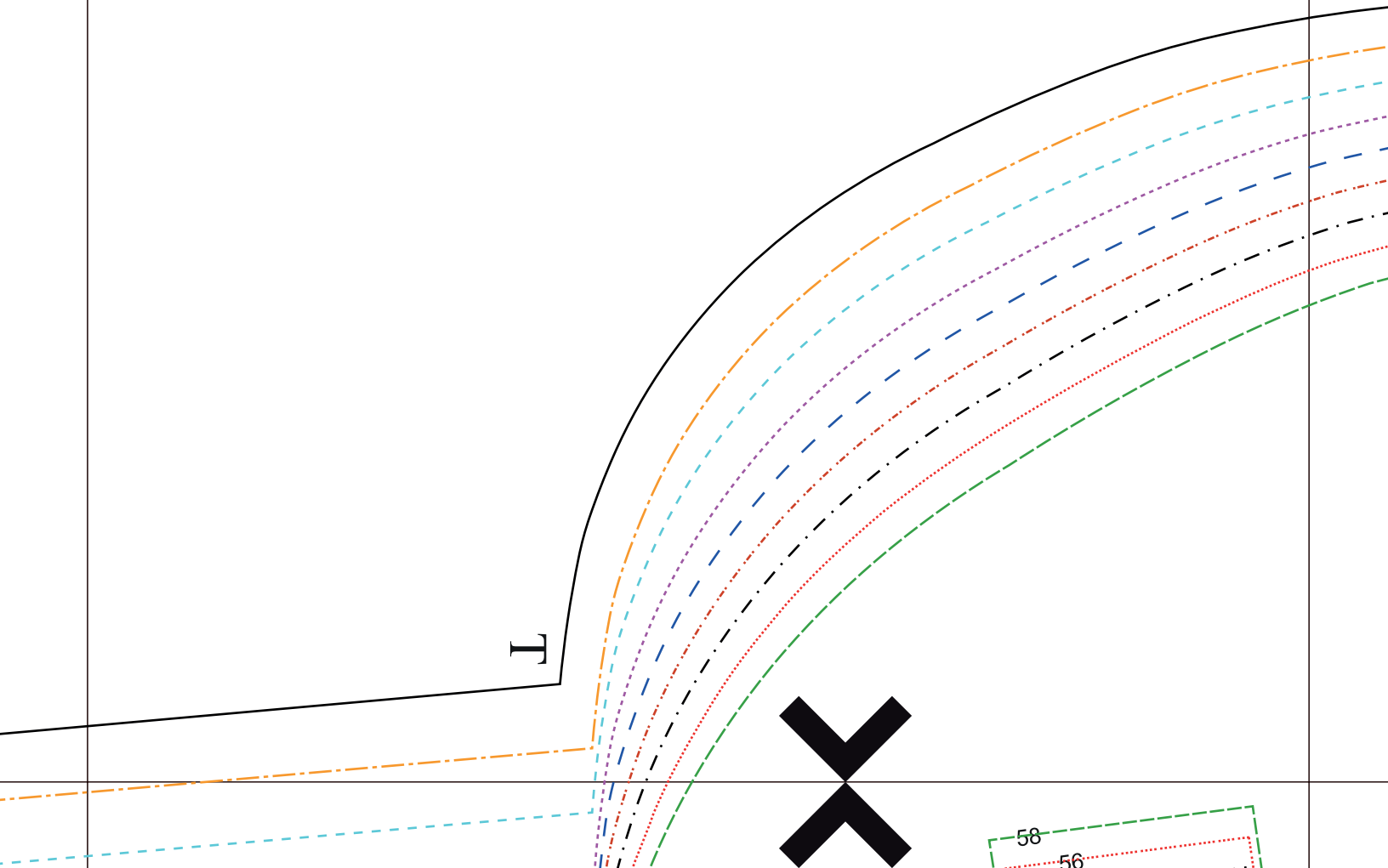
MEZZO DIETRO INTERO DRITTOFILO

- Demi-derrière entier en droit de fil
- Center back - Place on straight grain fold
- Medio atrás entero derecho hilo



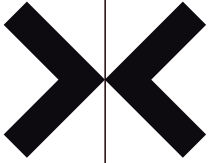
3

© *Manfy*



APERTURA  
- Ouverture  
- Opening  
- Abertura

J

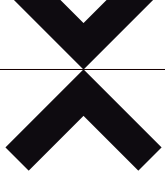


4

© *Manfy*

1913  
42  
44  
46  
48  
50  
52  
54  
56  
58





1913

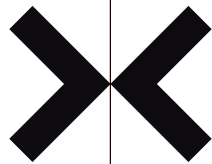
42

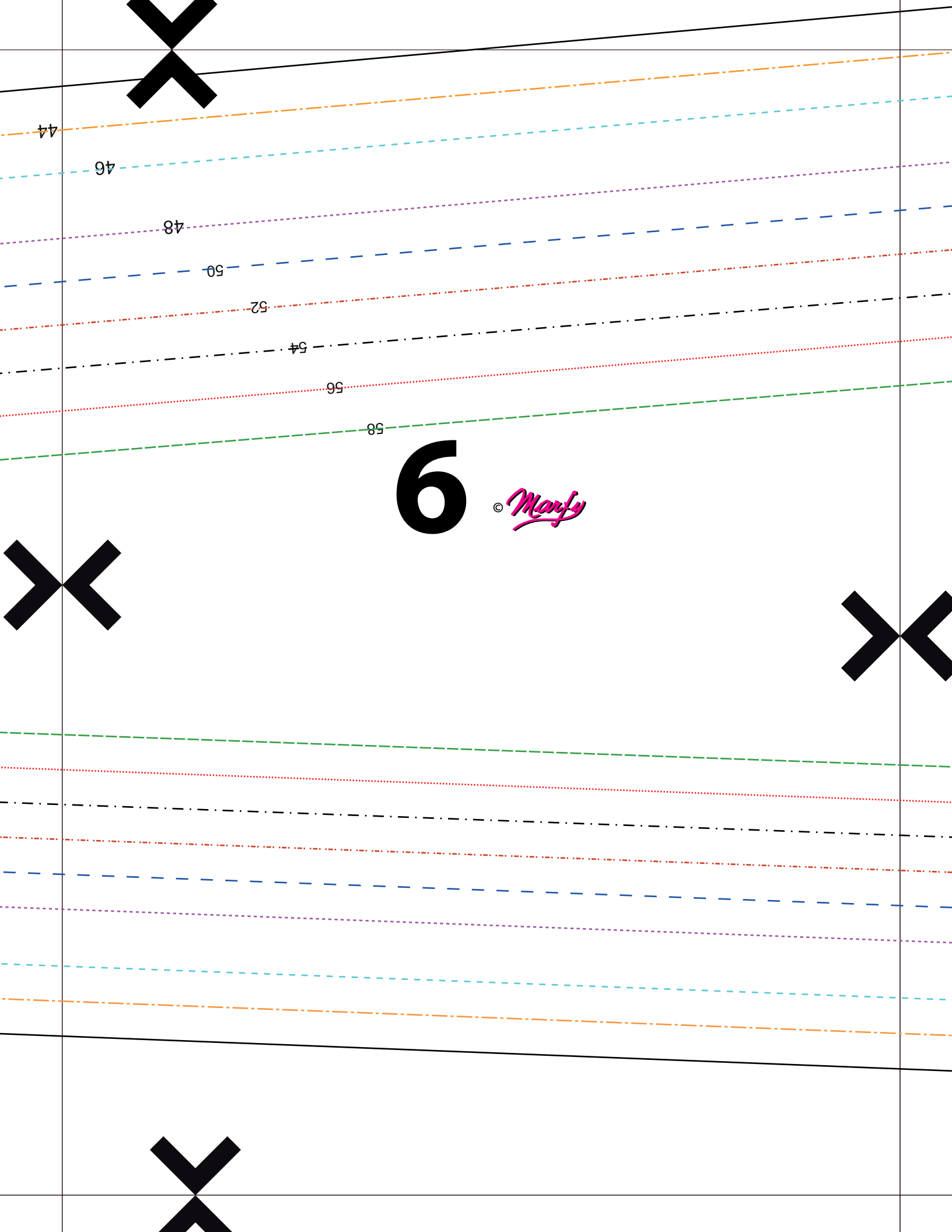
44

46

© *Marfy*

5





6

© Marfy

44

46

48

50

52

54

56

58



7

© *Manfy*

58

56

54

52

50

48

46

44

42

META' DAVANTI

- Moitié devant

- Center-front

- Mitad delante

INTERO DRITTOFILO

- Entier droit de fil

- Single piece on the grain

- Entero dirección del hilo

1913

S

COLLO

- Col

- Collar

- Cuello

META' DIETRO

- Moitié derrière

- Center-back

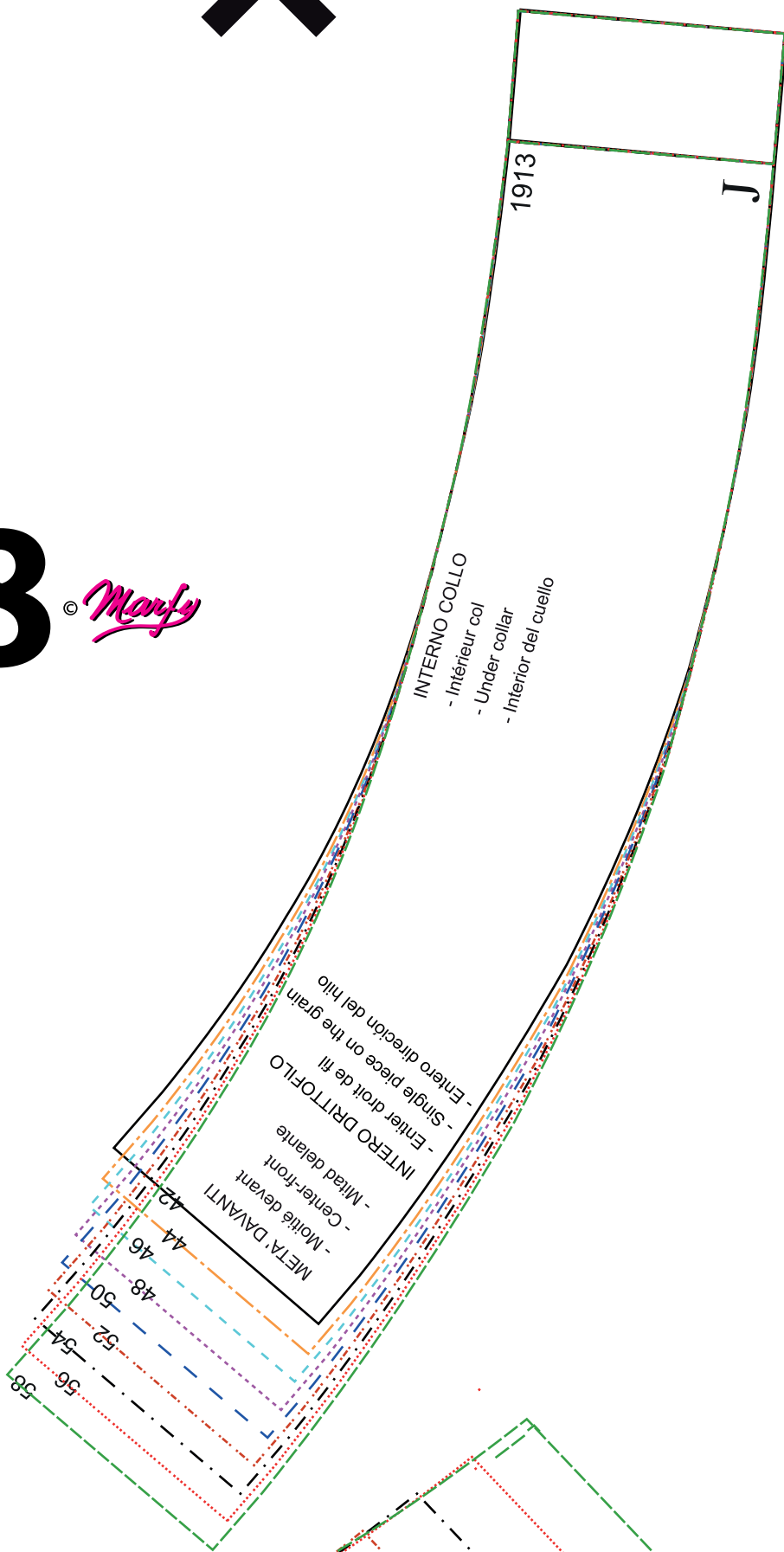
- Mitad detrás

J



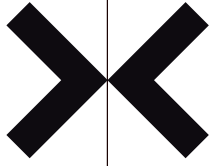
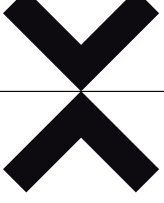
T

8 © *Manfy*





9



1913

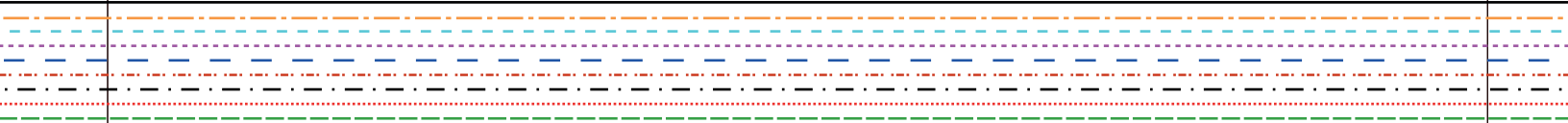
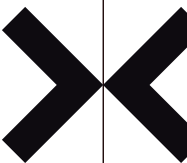
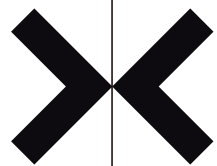
INSERIRE ELASTICO

- Insérer élastique
- Insert elastic
- Inserir elástico

- Taglia/Size **42**= cm 88
- Taglia/Size **44**= cm 92
- Taglia/Size **46**= cm 96
- Taglia/Size **48**= cm 102
- Taglia/Size **50**= cm 106
- Taglia/Size **52**= cm 110
- Taglia/Size **54**= cm 114
- Taglia/Size **56**= cm 116
- Taglia/Size **58**= cm 118

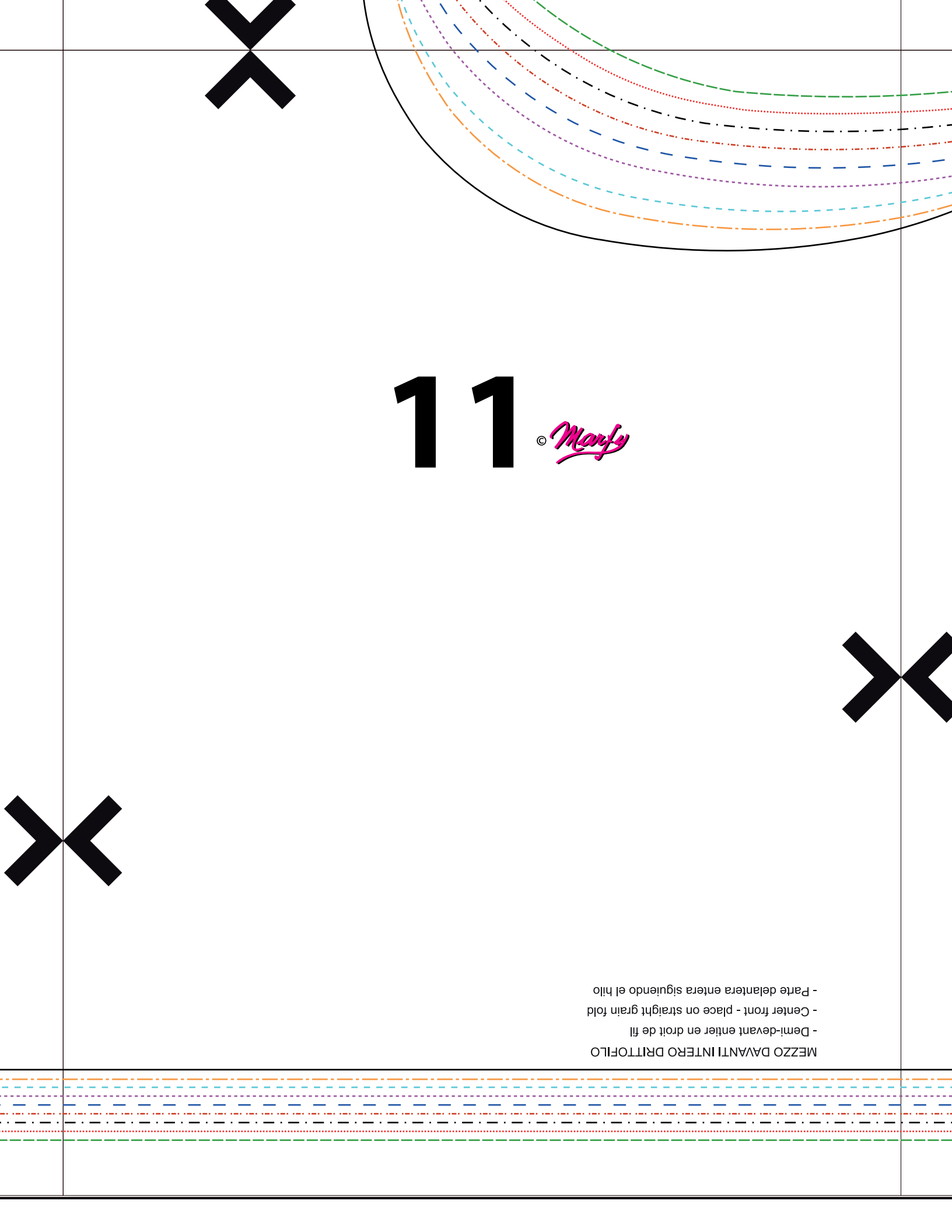


10 *Manya*®



11 *Manfy* ©

MEZZO DAVANTI INTERO DRITTOFILO  
- Demi-devant entier en droit de fil  
- Center front - place on straight fold  
- Parte delantera entera siguiendo el hilo



# 12

© *Manfy*

ARRICCIARE  
- Froncer  
- Gathering  
- Rizar

1913 42 44 46 48 50 52 54 56 58

S

