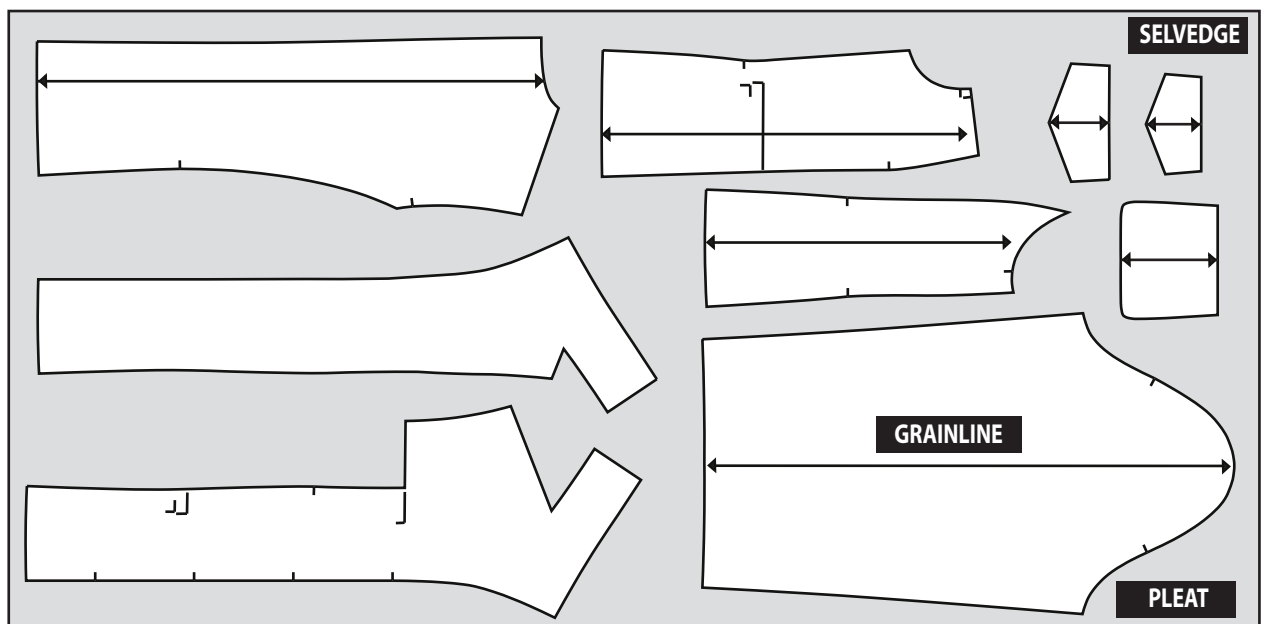
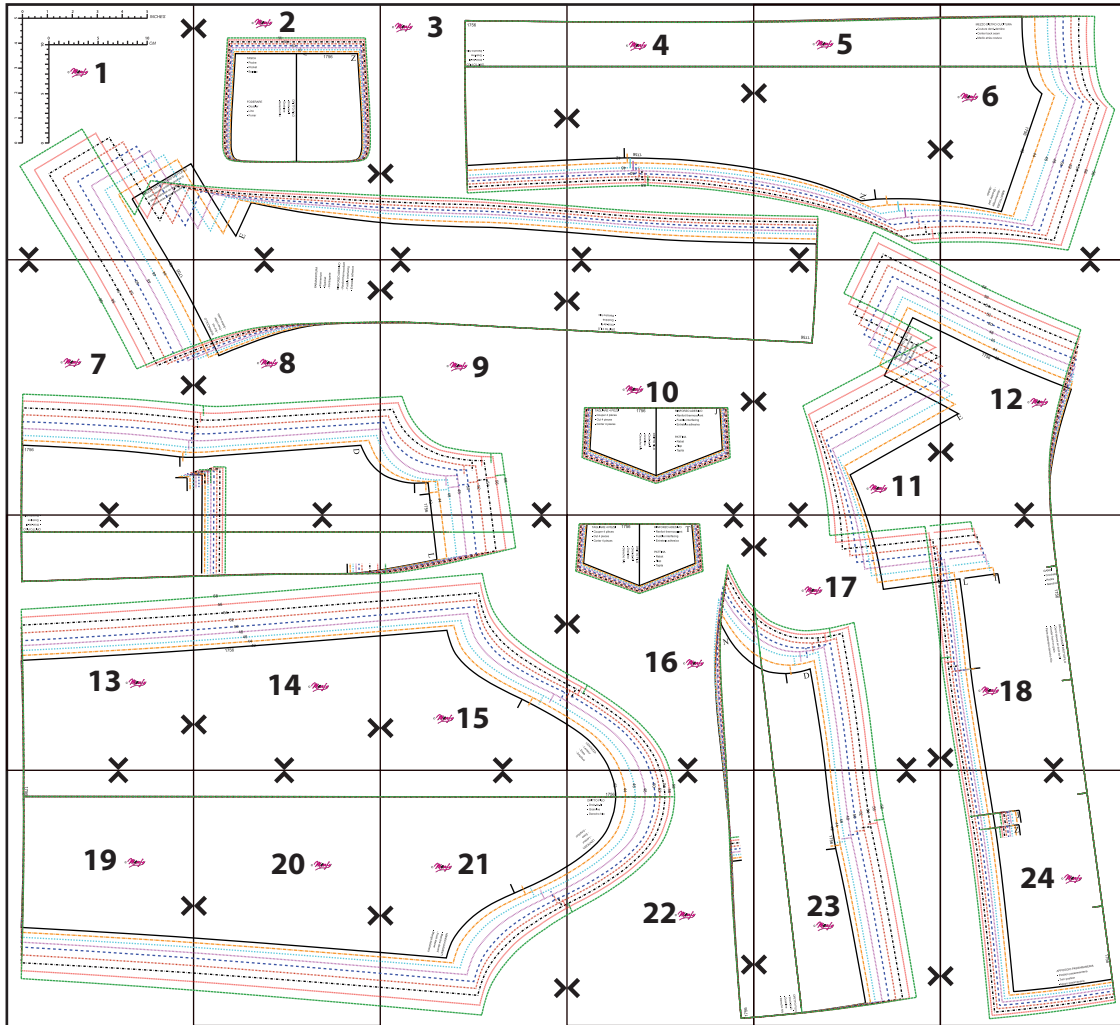


## **Print and cut tutorial for Marfy patterns in PDF format.**

- 1 - Print the file in size **Letter or A4**. Before start printing remember to select **100% or “Actual Size”** as scale of the page, otherwise pattern will be altered. You can check the right scale with the rulers that you find on pattern.
- 2 - Trim with scissors the right edge and the lower edge along the continuous line, so that the arrowheads are aligned with the edge, and join the pieces with adhesive tape matching arrows. For convenience in pulling the sheets, don't cut the left and upper edges, so that one side has a margin of support.
- 3 - Join all pages following the numerical order of the prospect in the first page, be sure that arrowheads match up in each side as well as the lines of the pattern.
- 4 - When the graph will be complete, cut or trace single pieces on onion paper following the line of the chosen size.
- 5 – Now the pattern is ready to be placed on fabric for the cut.
- 6 - If you want to customize the pattern please look at our [specific PDF](#).

**This pattern is only for personal use. It is forbidden the industrial use.  
Any reproduction, even partial, is prohibited. All rights reserved.**

© Marfy S.r.l.



**FABRIC LAY PLAN**

Please note: the lay plan is a suggestion and dependent on the width of fabric.  
This lay plan was created on fabric mt. 1.40 wide folded in double.

0 1 2 3 4 5 INCHES

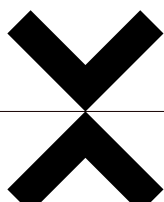
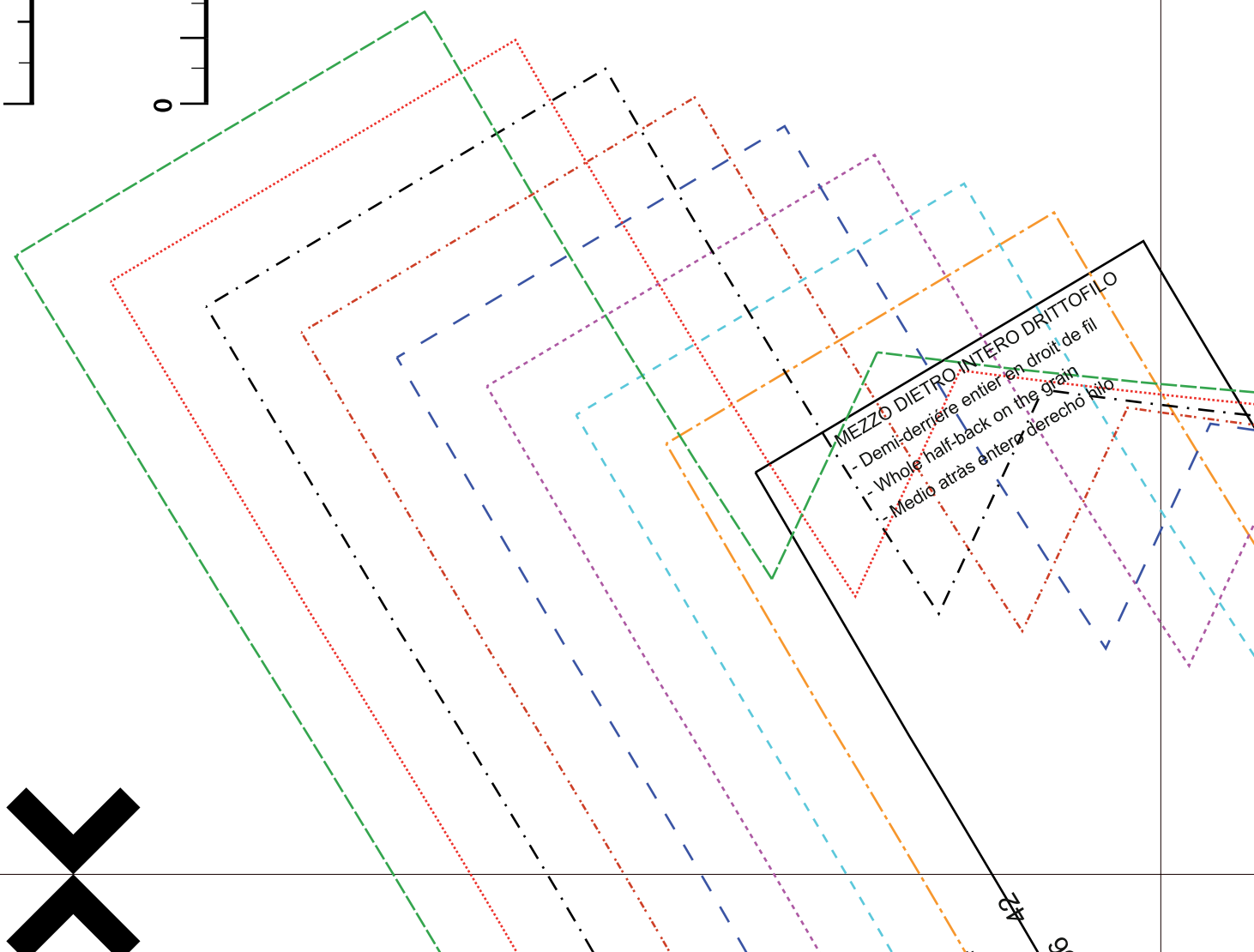
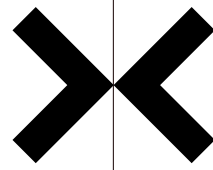
0 5 10 CM

0 1 2 3 4 5

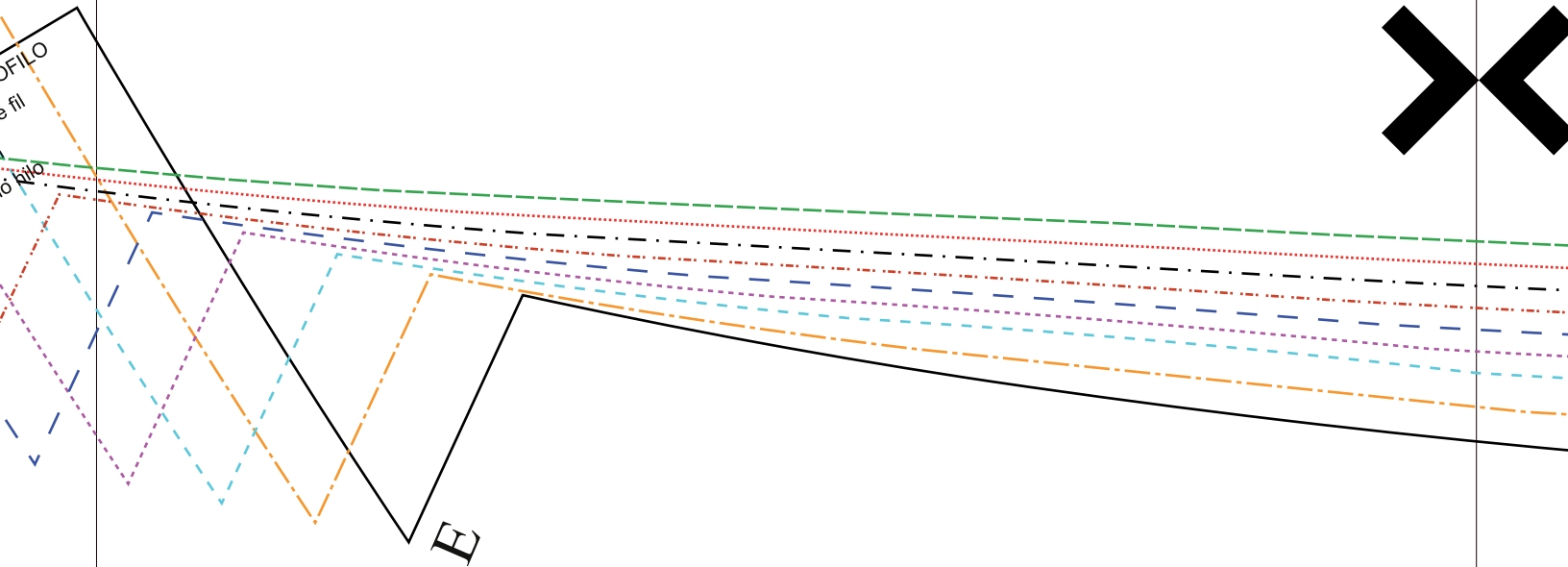
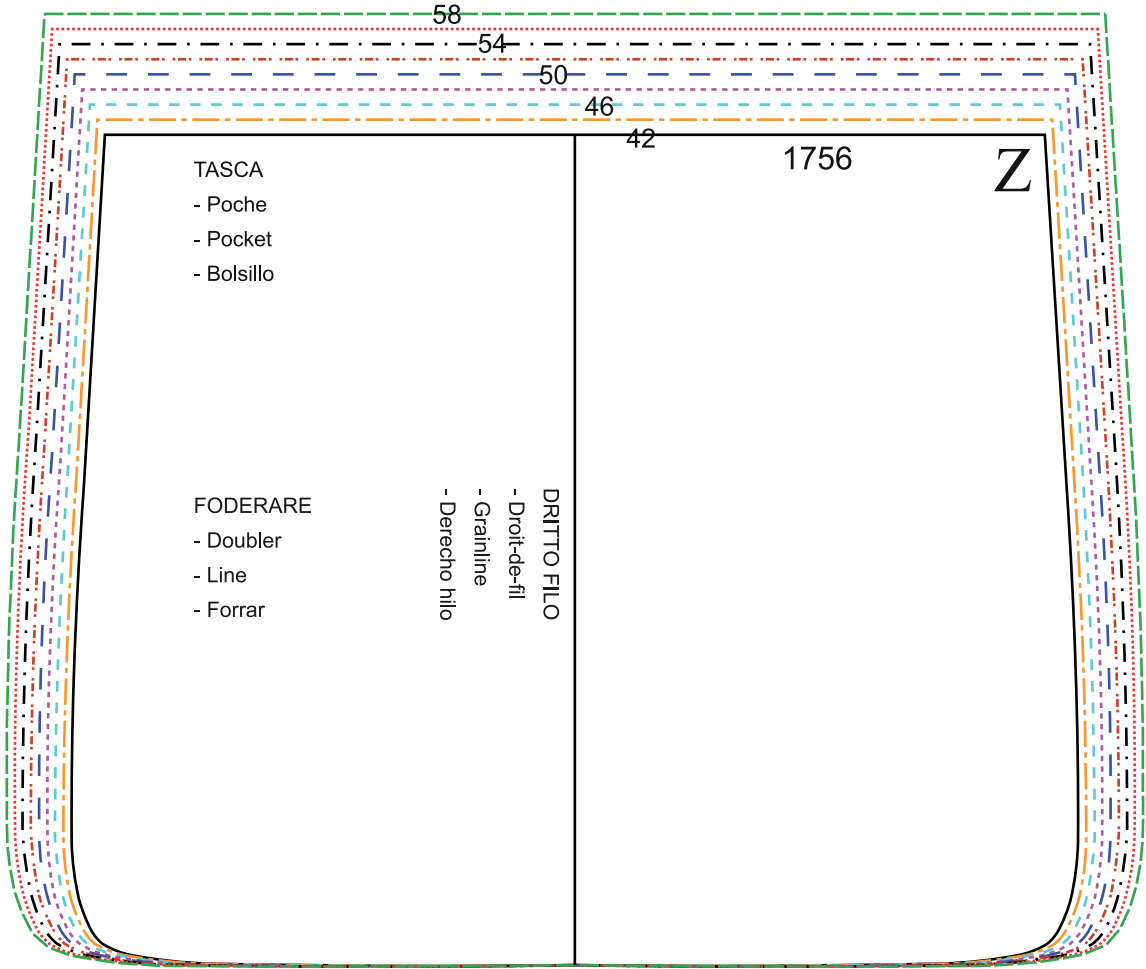
0 5 10

© *Manfy*

1



24 6

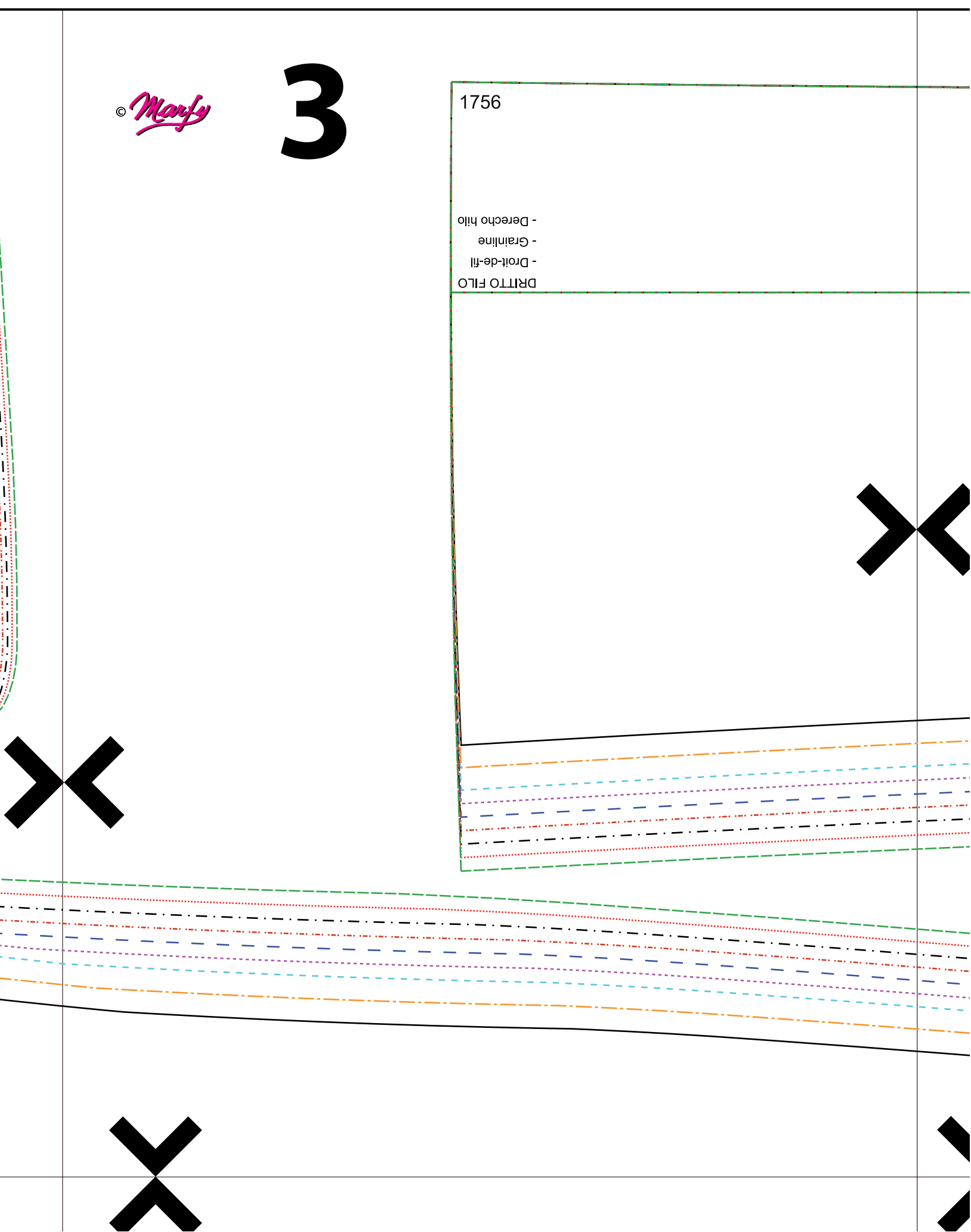
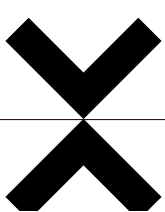
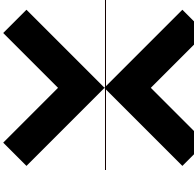
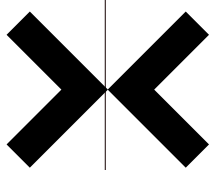


© *Marfy*

# 3

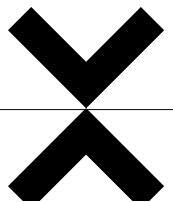
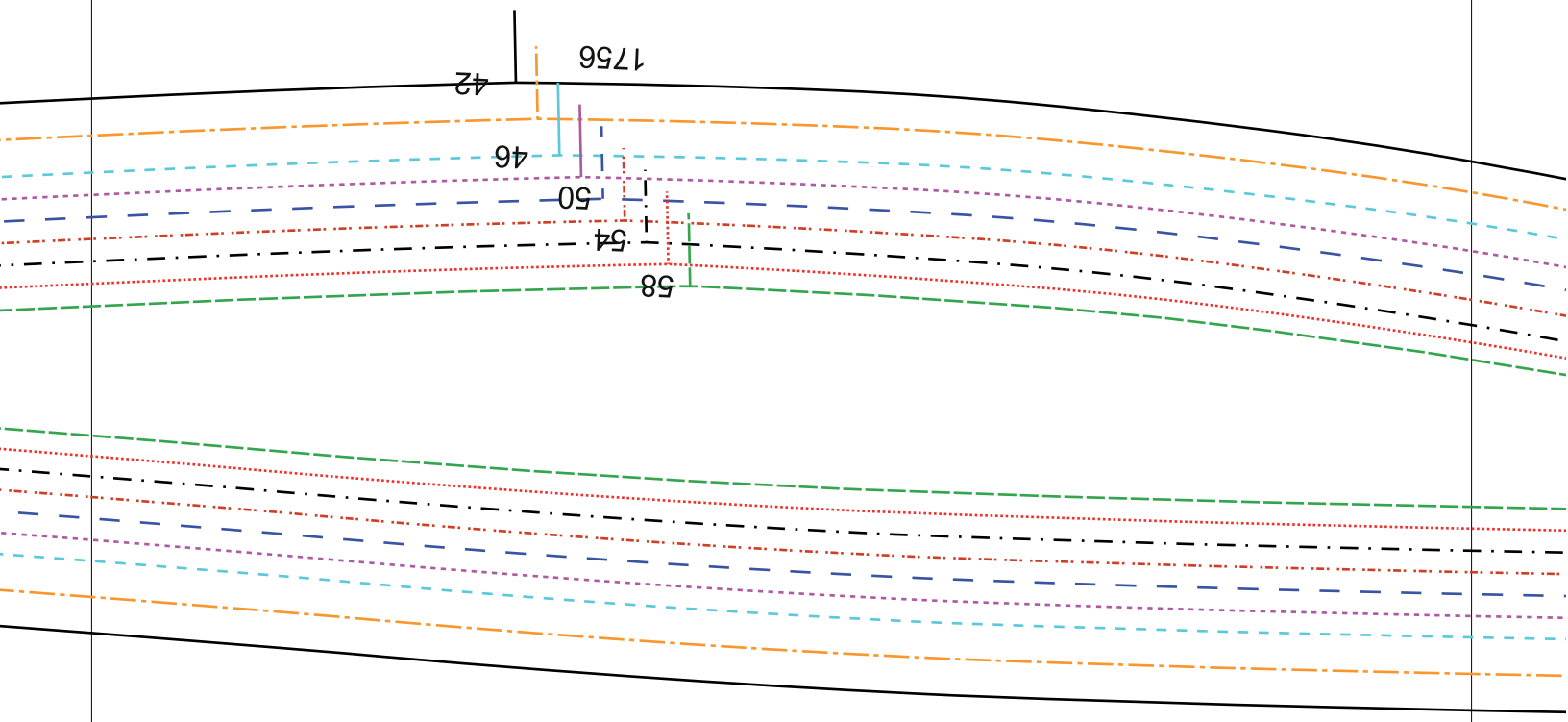
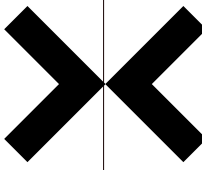
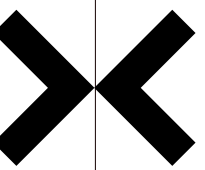
1756

DRITTO FILO  
- Droit-de-fill  
- Grainline  
- Derecho hilo

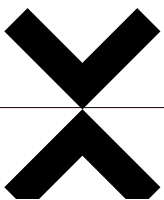
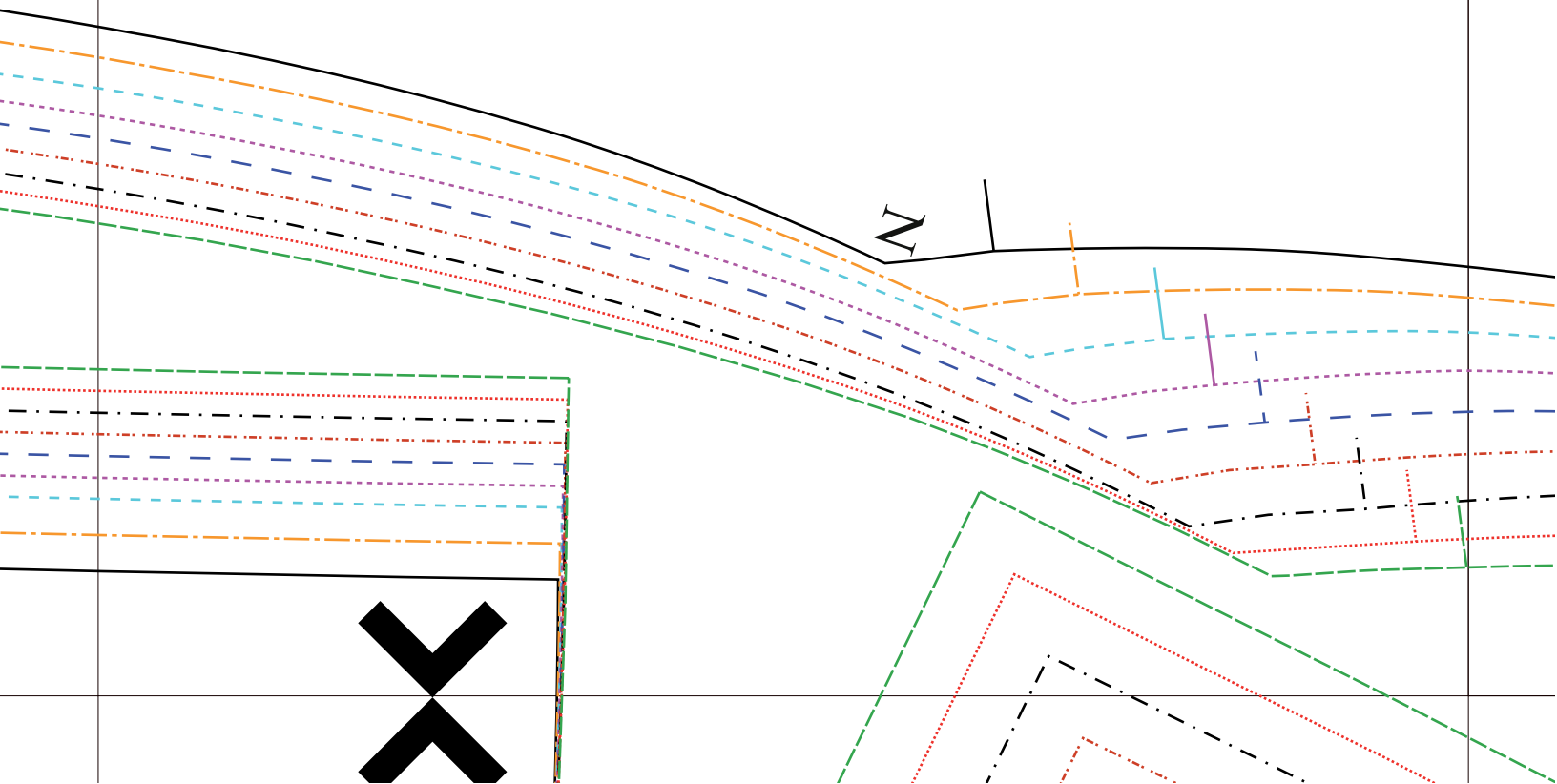
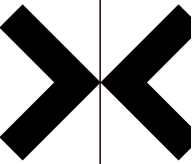
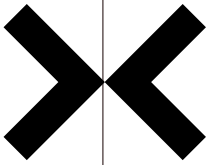


© *Marfy*

# 4



© *Manly* 5



MEZZO DIETRO CUCITURA

- Couture demi-derrière
- Center back seam
- Medio atrás costura

© *Manfy*

6

1756

42

44

46

48

50

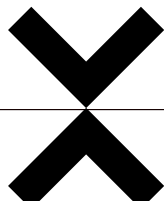
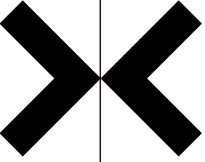
52

54

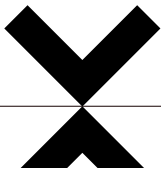
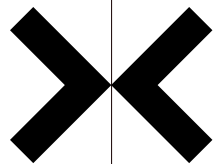
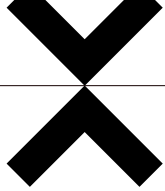
56

58

IMBOTTITURA  
- Rembourrage  
- Shoulder pad  
- Mullido

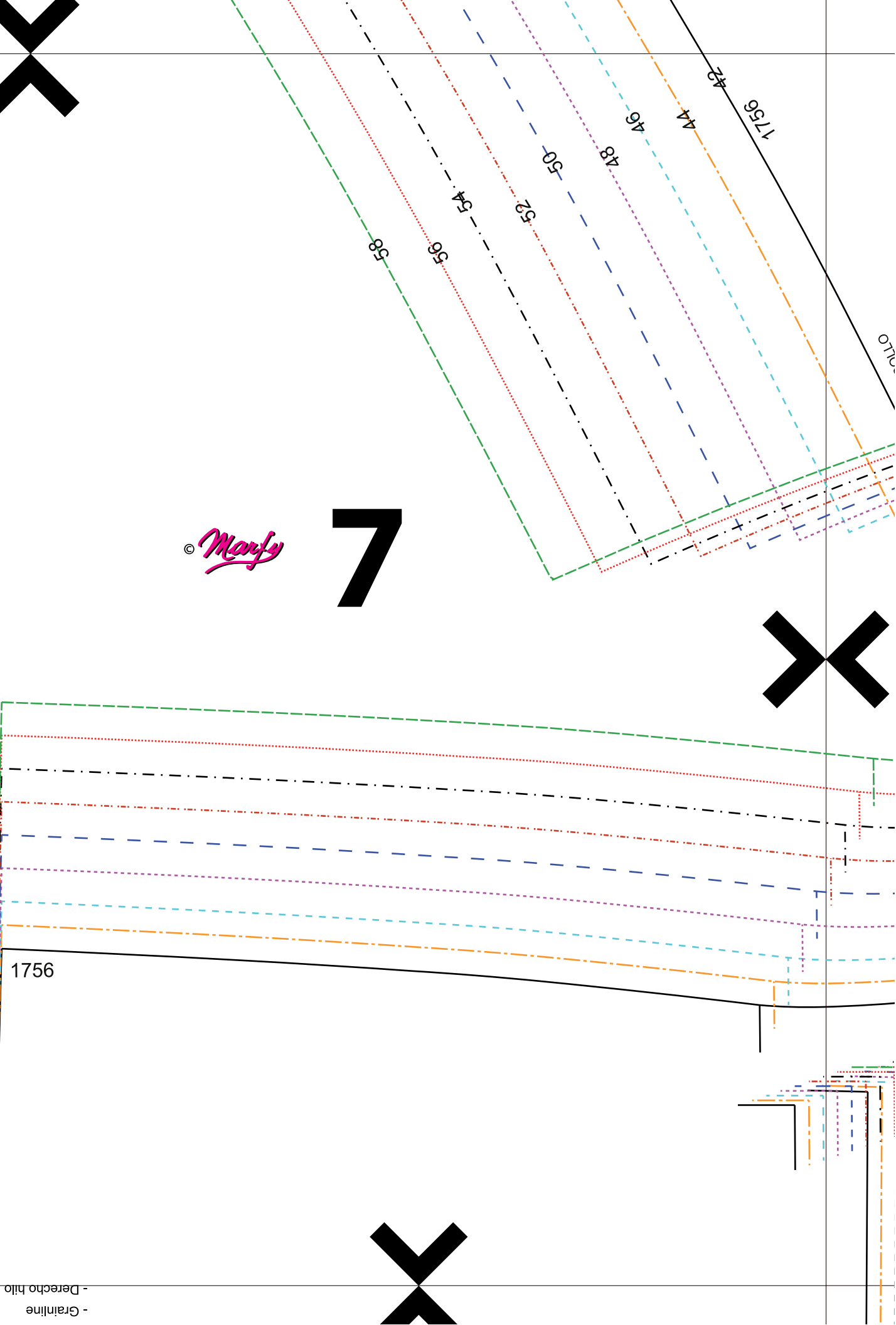




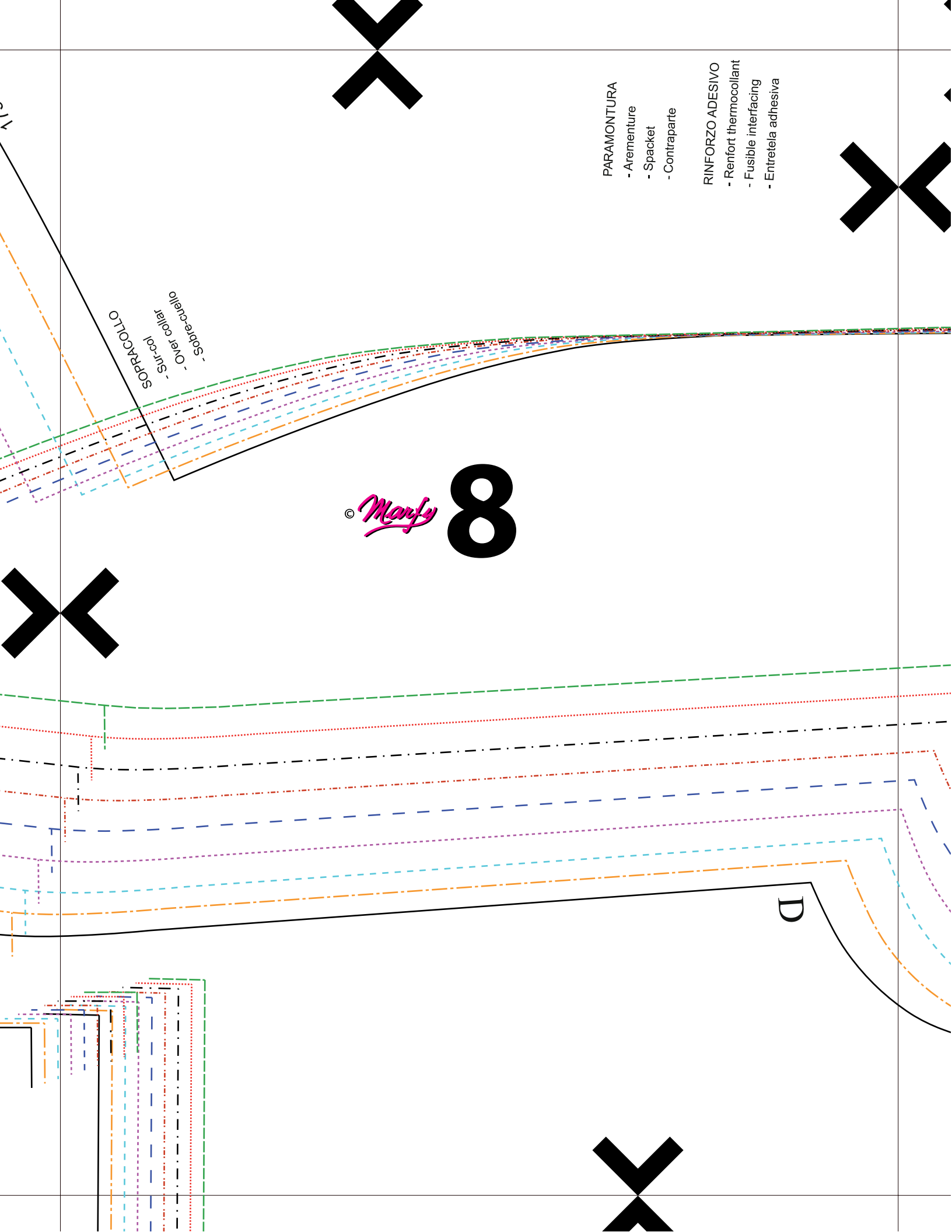


© *Manfy*

7



- Graline  
- Derecho hilo



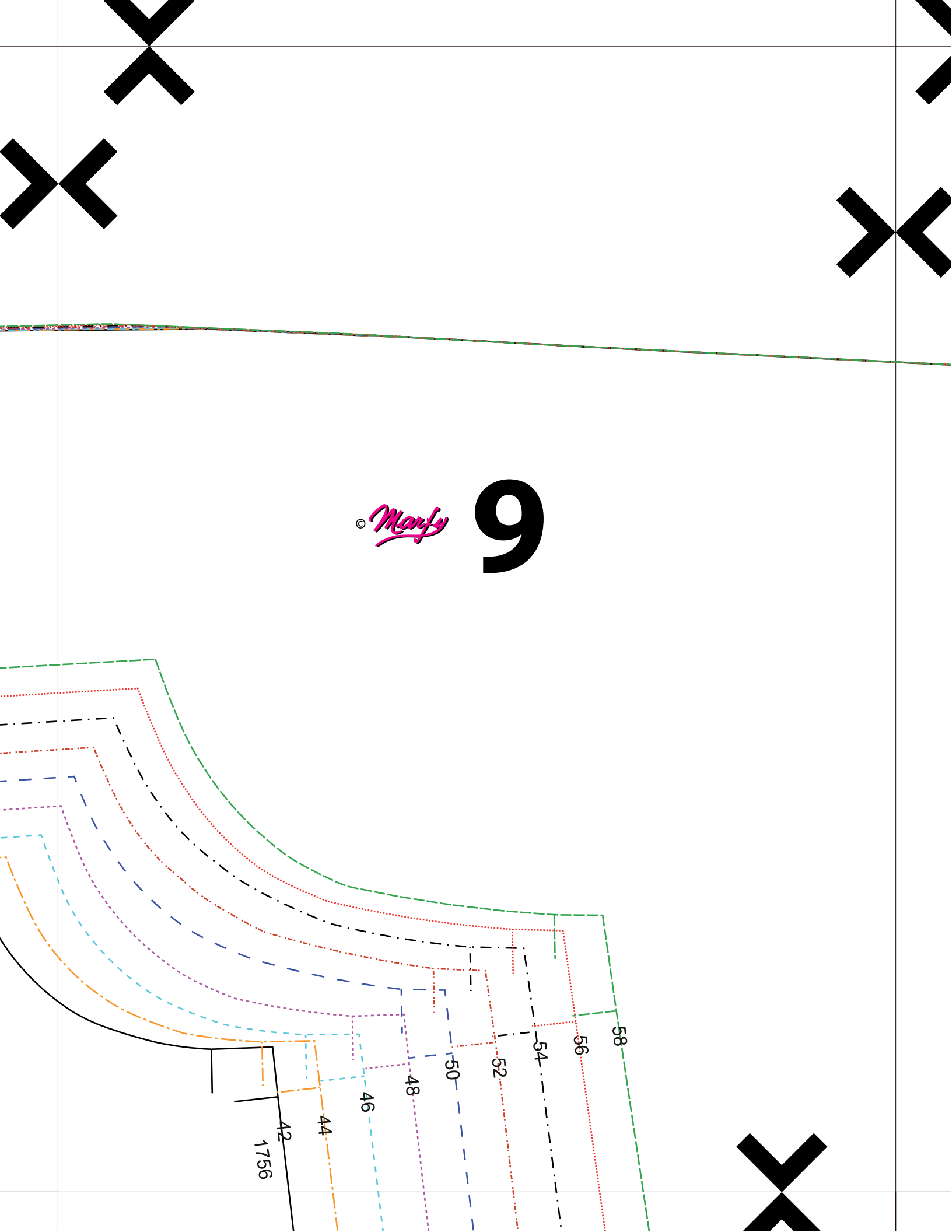
© *Manfy* 8

SOPRACOLLO  
- Sur-col  
- Sore-cuello

PARAMONTURA  
- Arementure  
- Spacket  
- Contraparte

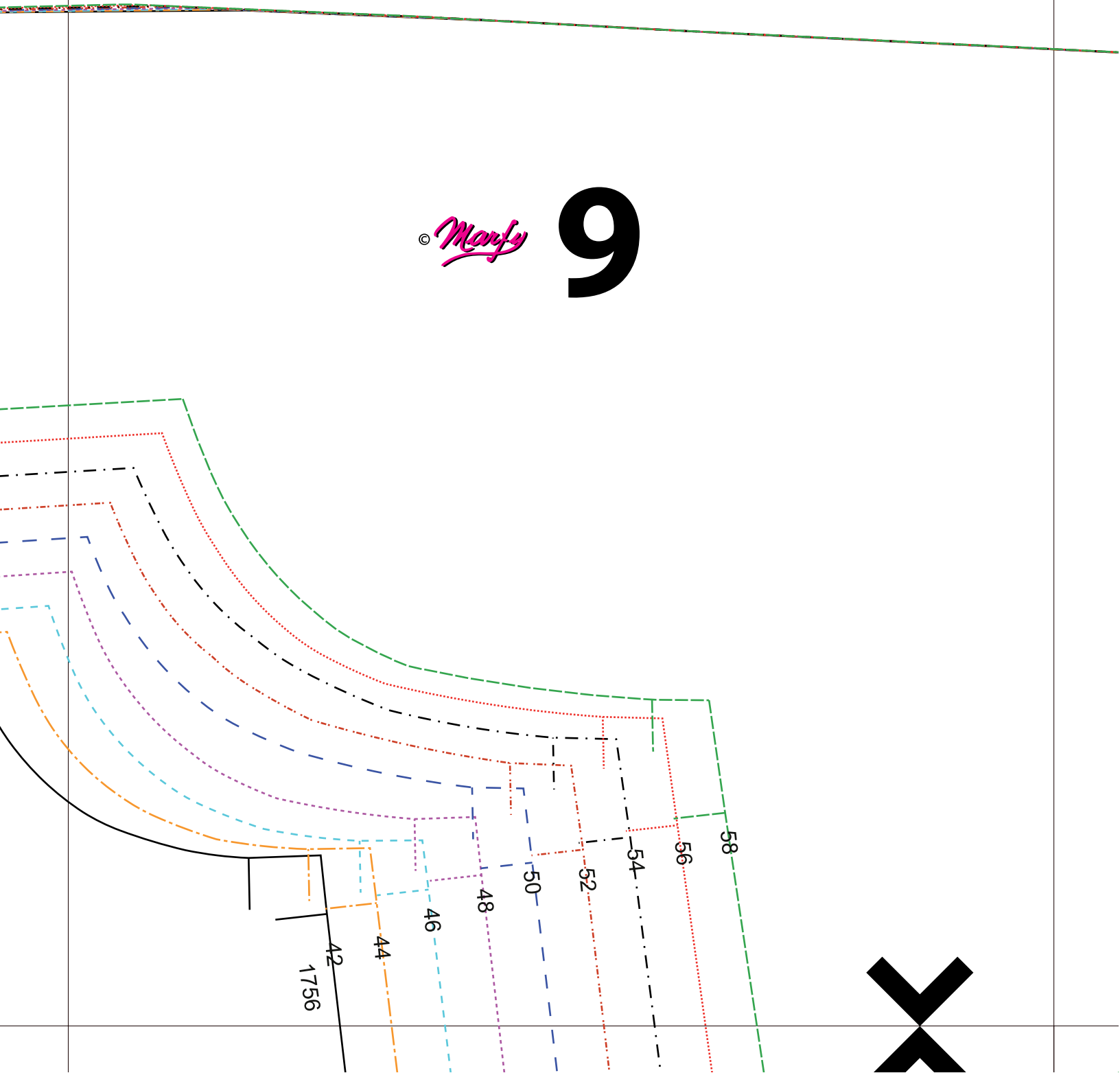
RINFORZO ADESIVO  
- Renfort thermocollant  
- Fusible interfacing  
- Entretela adhesiva

D



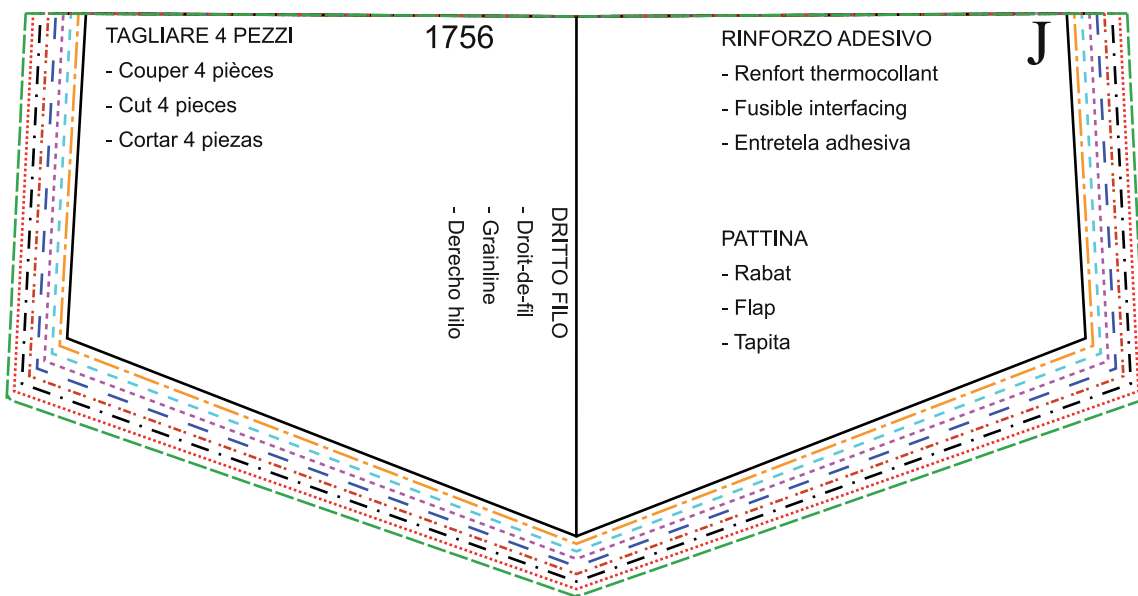
© *Marfy*

# 9



- Derecho hilo  
- Grainline  
- Droit-de-fil  
DRITTO FILO

© *Manfy* **10**

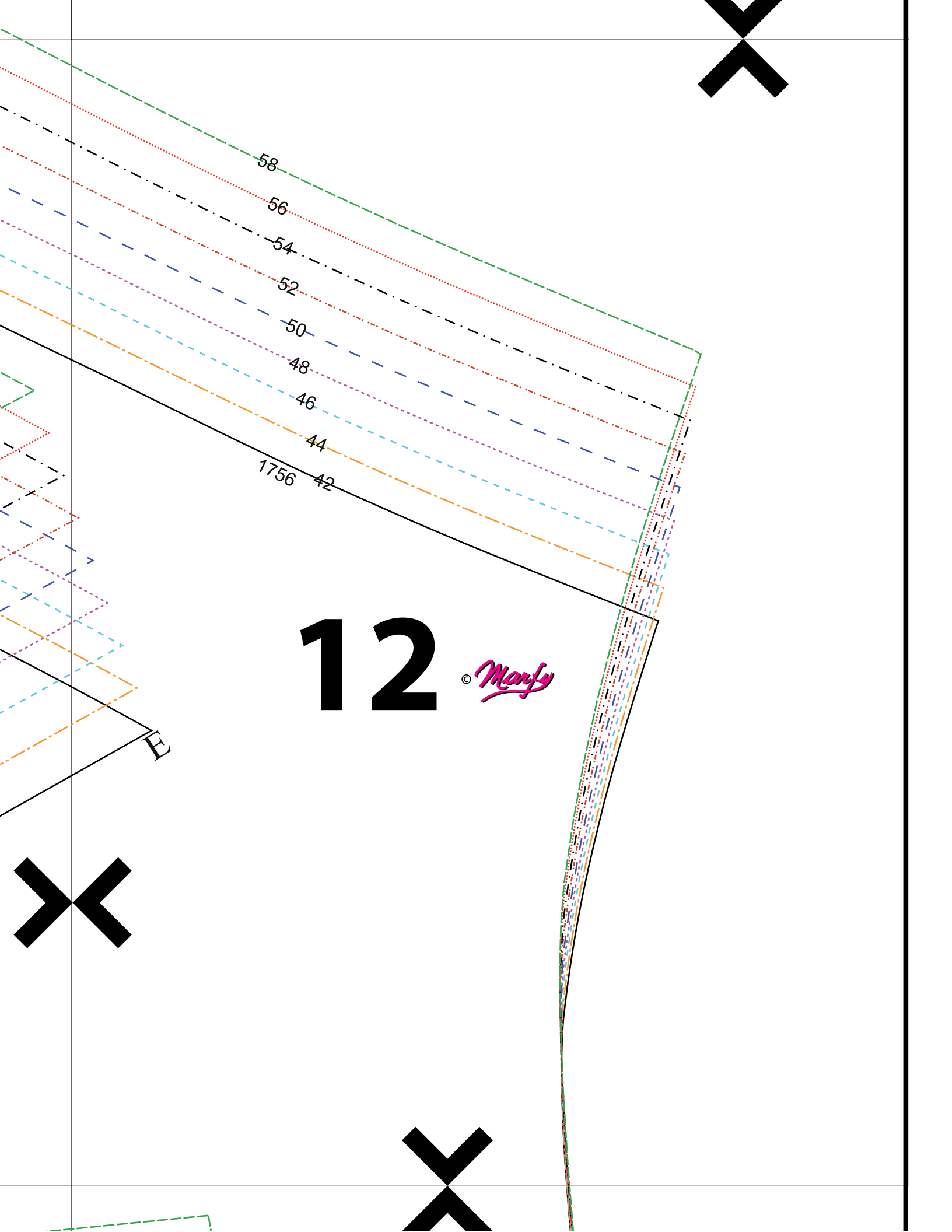


1756

MEZZO DIETRO CUCITURA  
- Couture derri-derrière  
- Center back seam  
- Medio atrás costura

© *Manfy*

11



12

© Manfy

58

56

54

52

50

48

46

44

1756

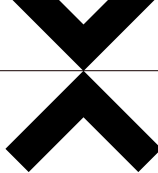
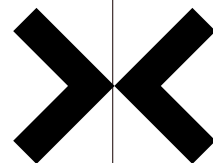
42

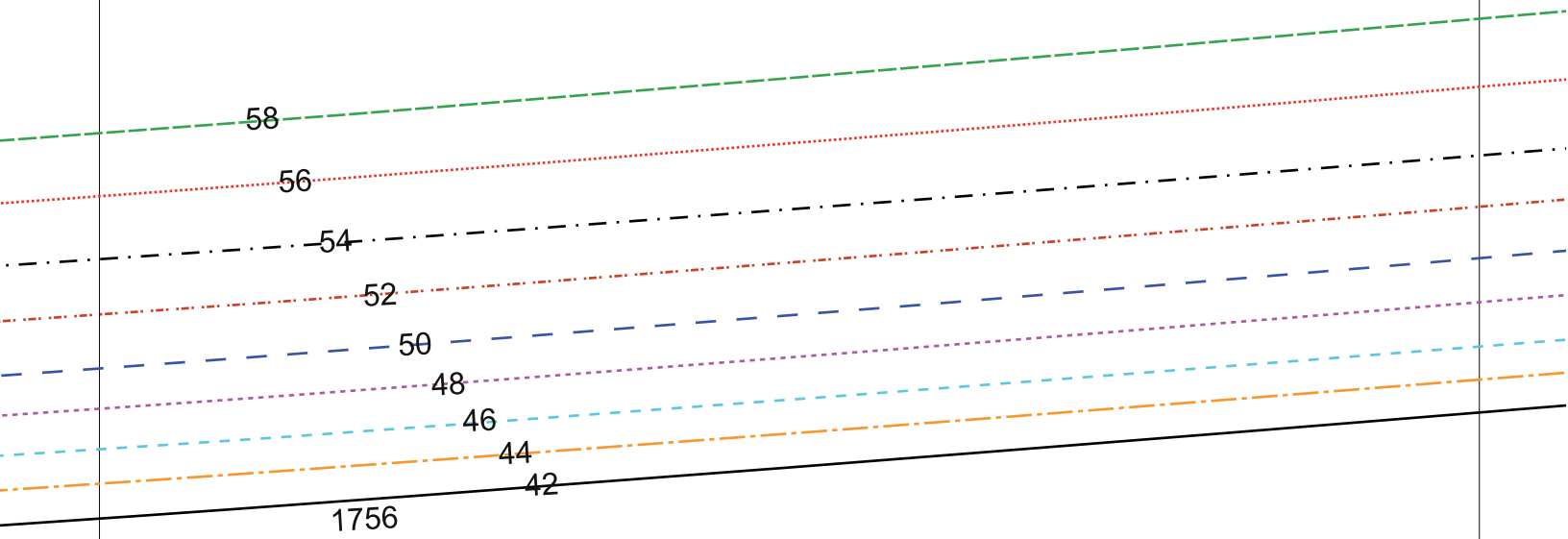
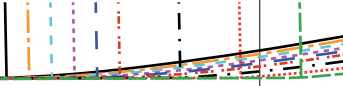
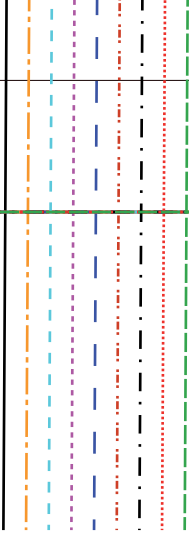
E

- Derecho hilo  
- Grainline  
- Droit-de-fill  
DRITTO FILO

13

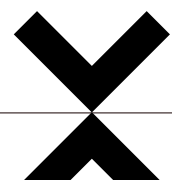
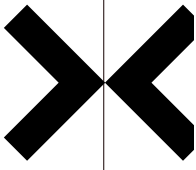
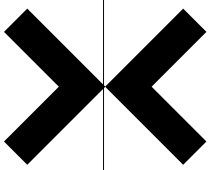
© *Manfy*



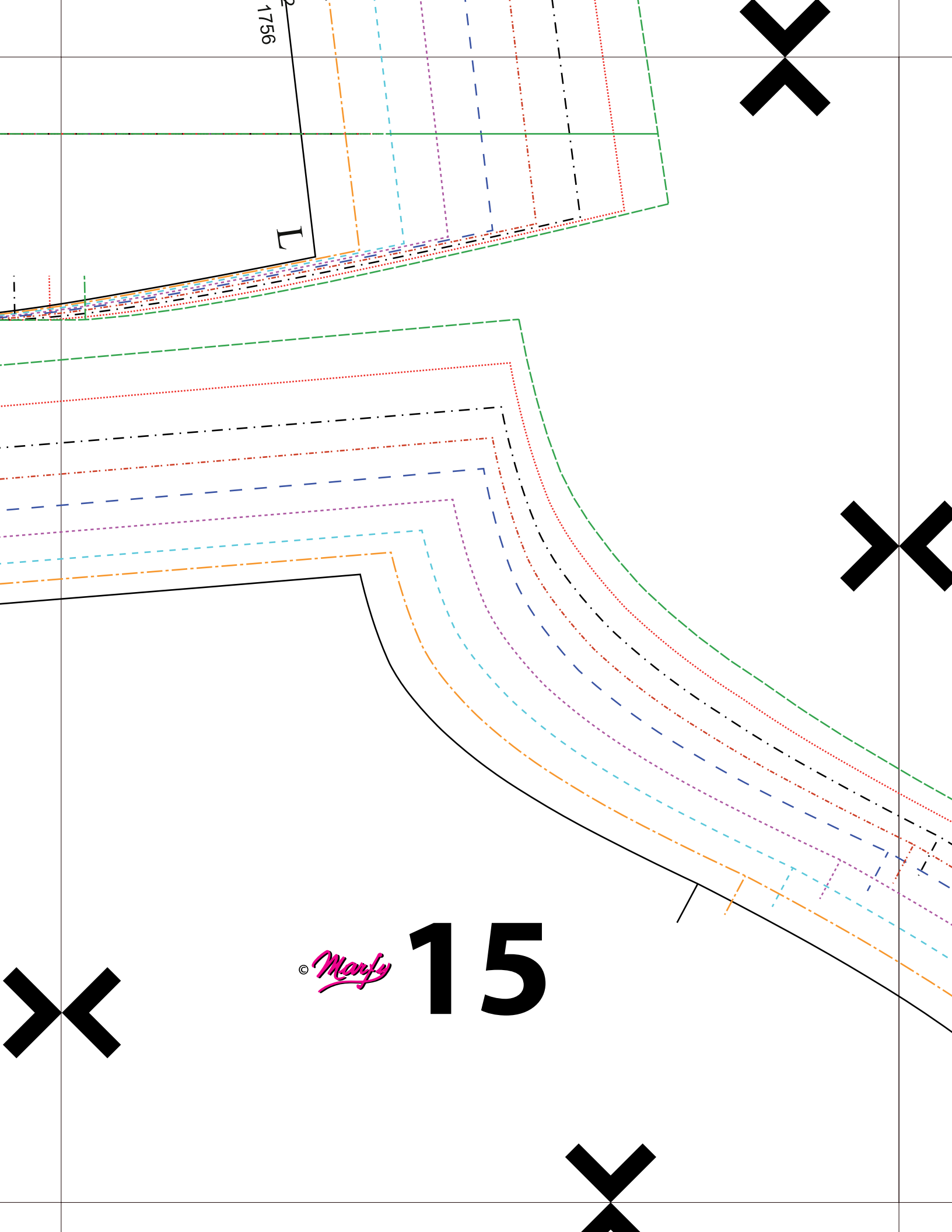


14

© *Manfy*





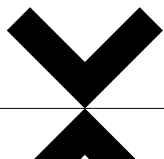
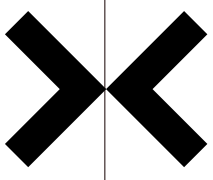
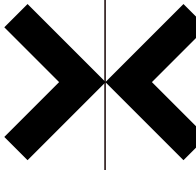
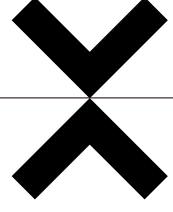


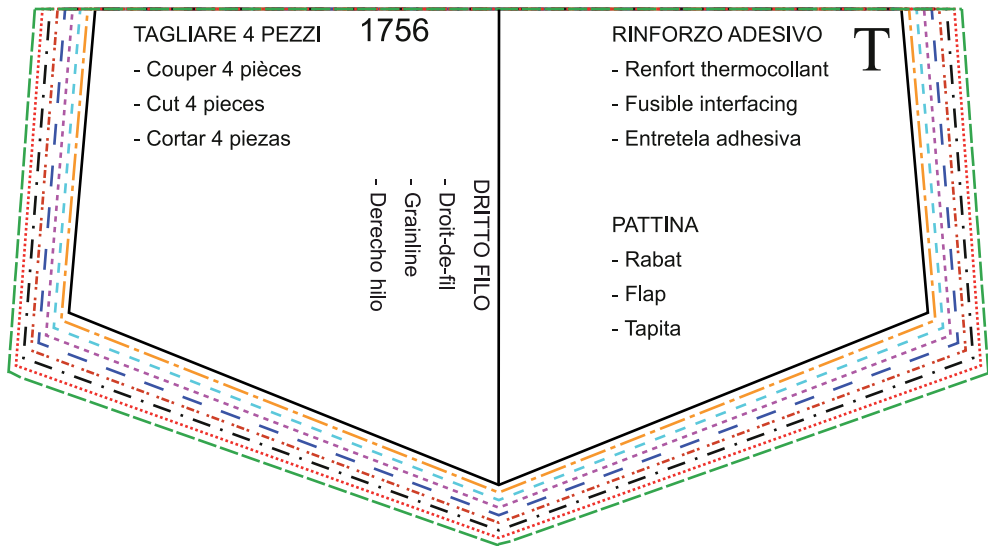
1756

L

© Marfy

15





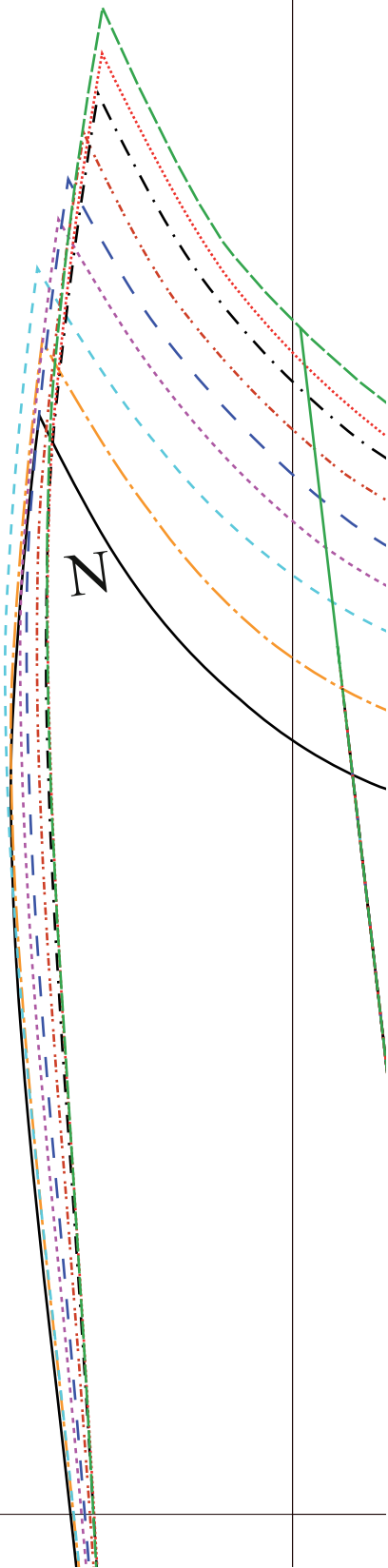
TAGLIARE 4 PEZZI 1756  
 - Couper 4 pièces  
 - Cut 4 pieces  
 - Cortar 4 piezas

RINFORZO ADESIVO T  
 - Renfort thermocollant  
 - Fusible interfacing  
 - Entretela adhesiva

DRITTO FILO  
 - Droit-de-fil  
 - Grainline  
 - Derecho hilo

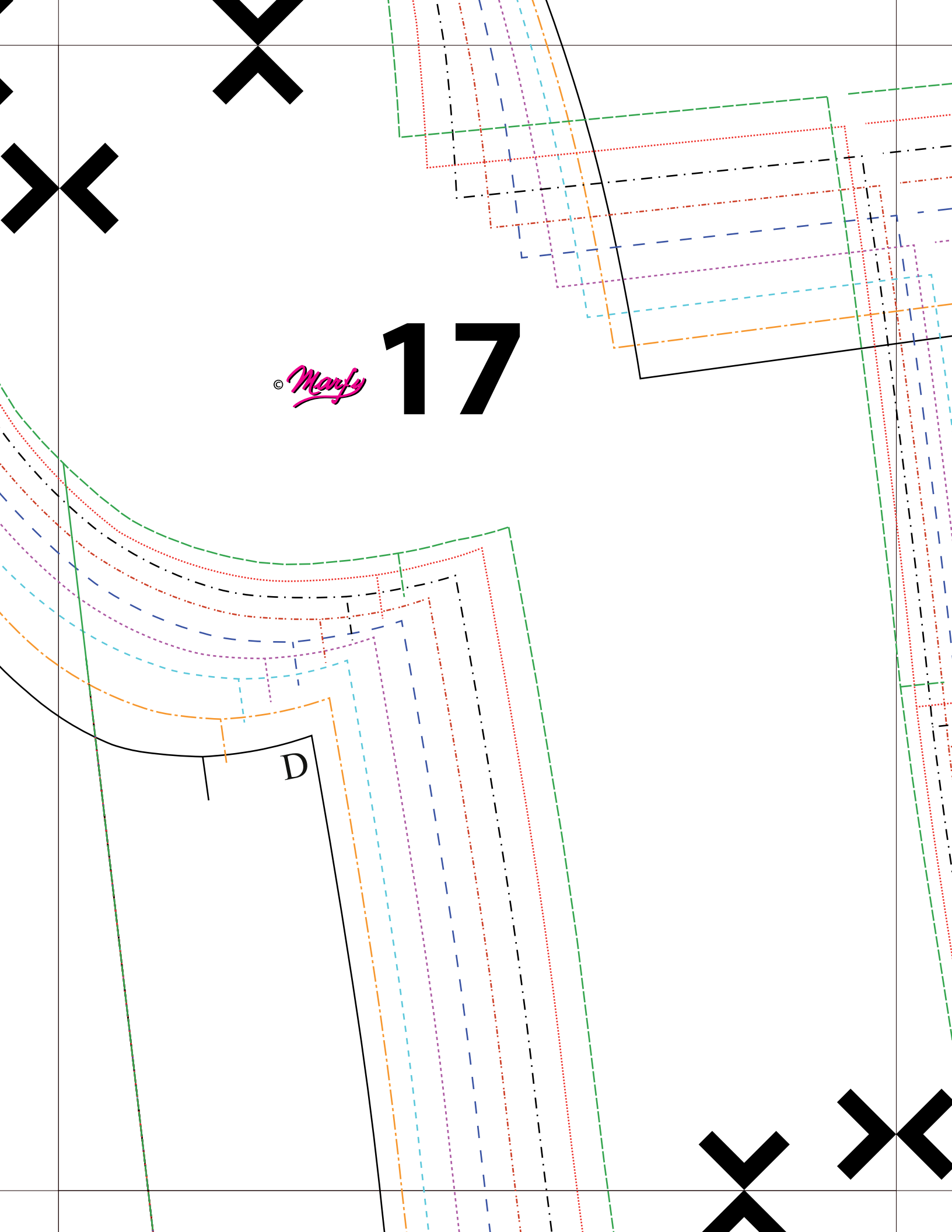
PATTINA  
 - Rabat  
 - Flap  
 - Tapita

16 © *Manfy*



N

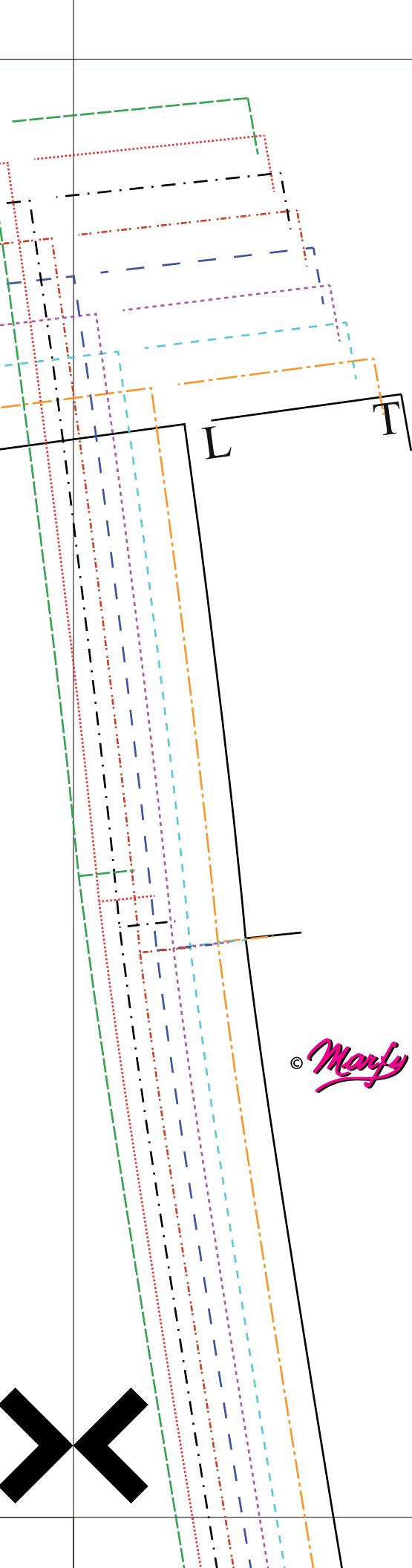
LENTEZZA  
 - Lenteur  
 - Ease  
 - Amplitud



© Marfy

17

D

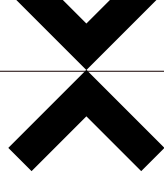


GANCI  
- Crochets  
- Hooks  
- Ganchos

1756

MEZZO DAVANTI DRITTOFILO  
- Demi-devant en droit de fil  
- Center front on grain  
- Parte delantera derecho hilo

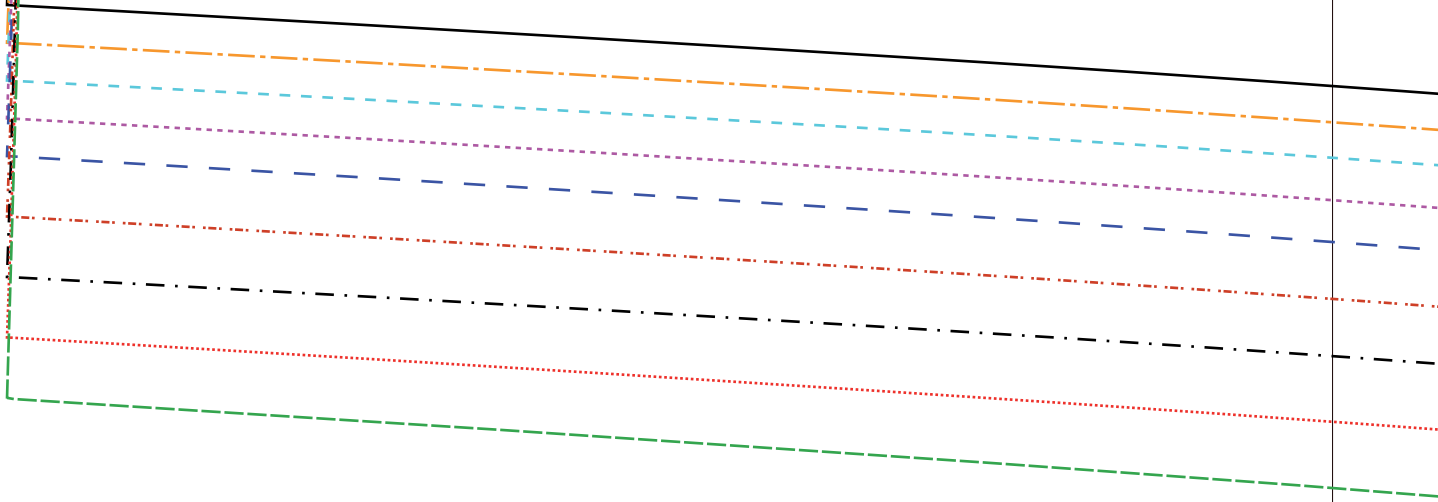
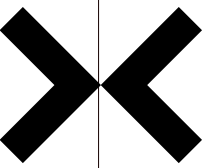
© *Manfy* **18**

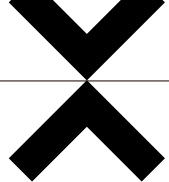


1756

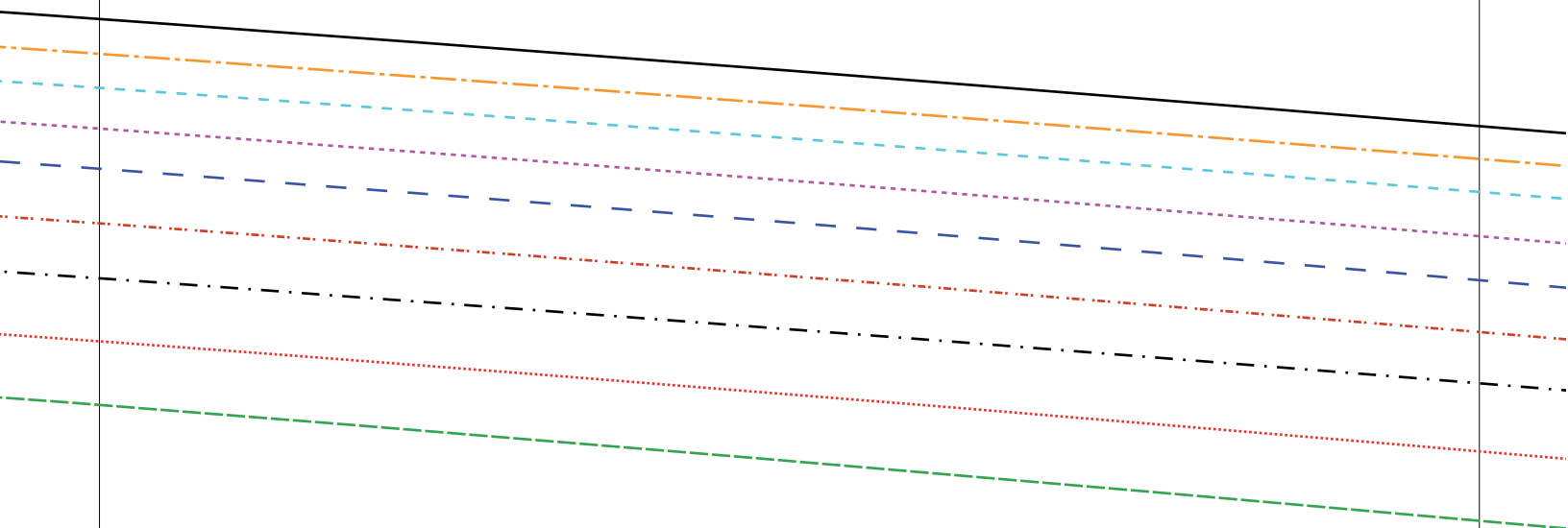
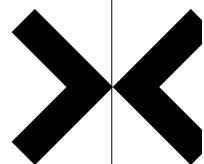
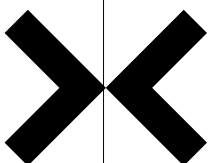
19

© *Manfy*





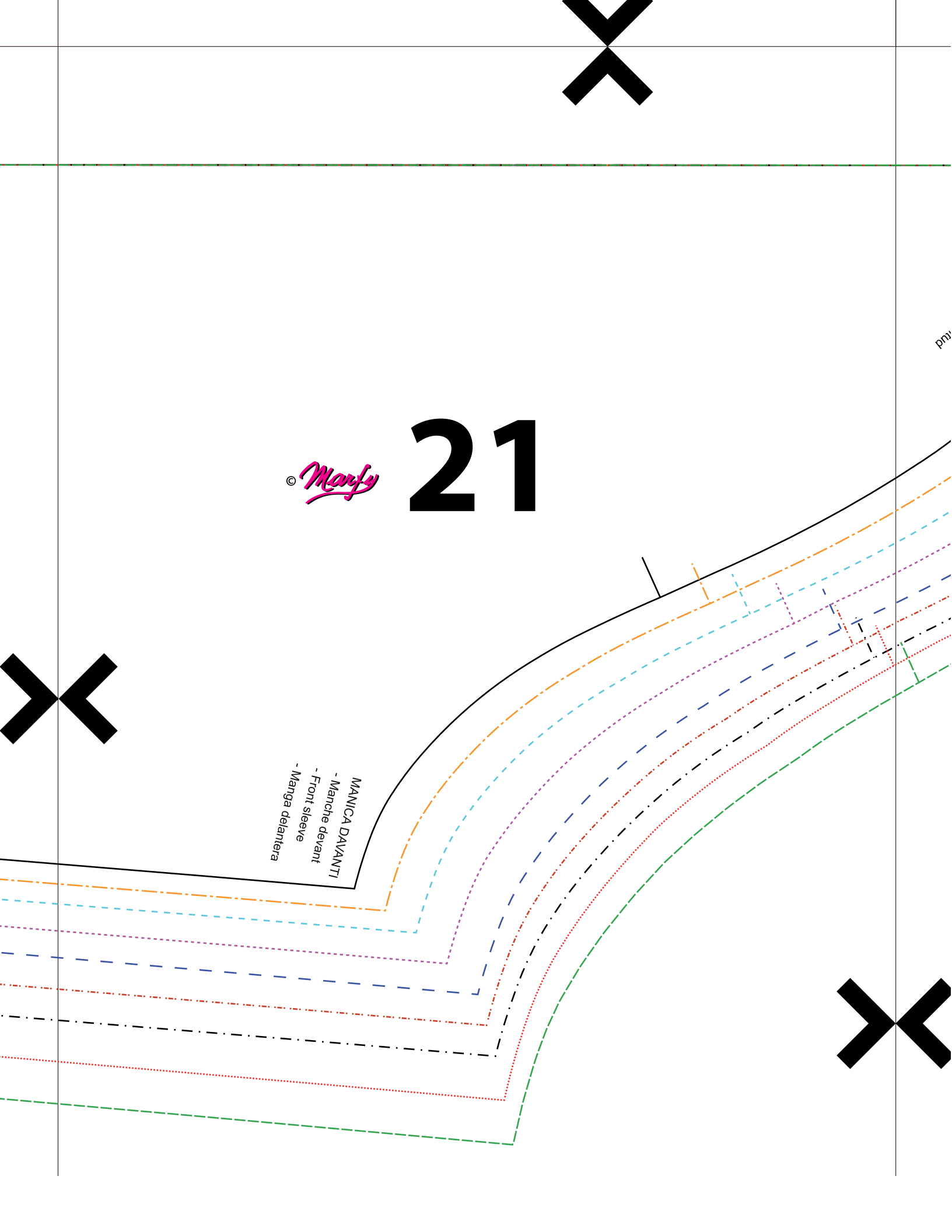
20 *Manly*

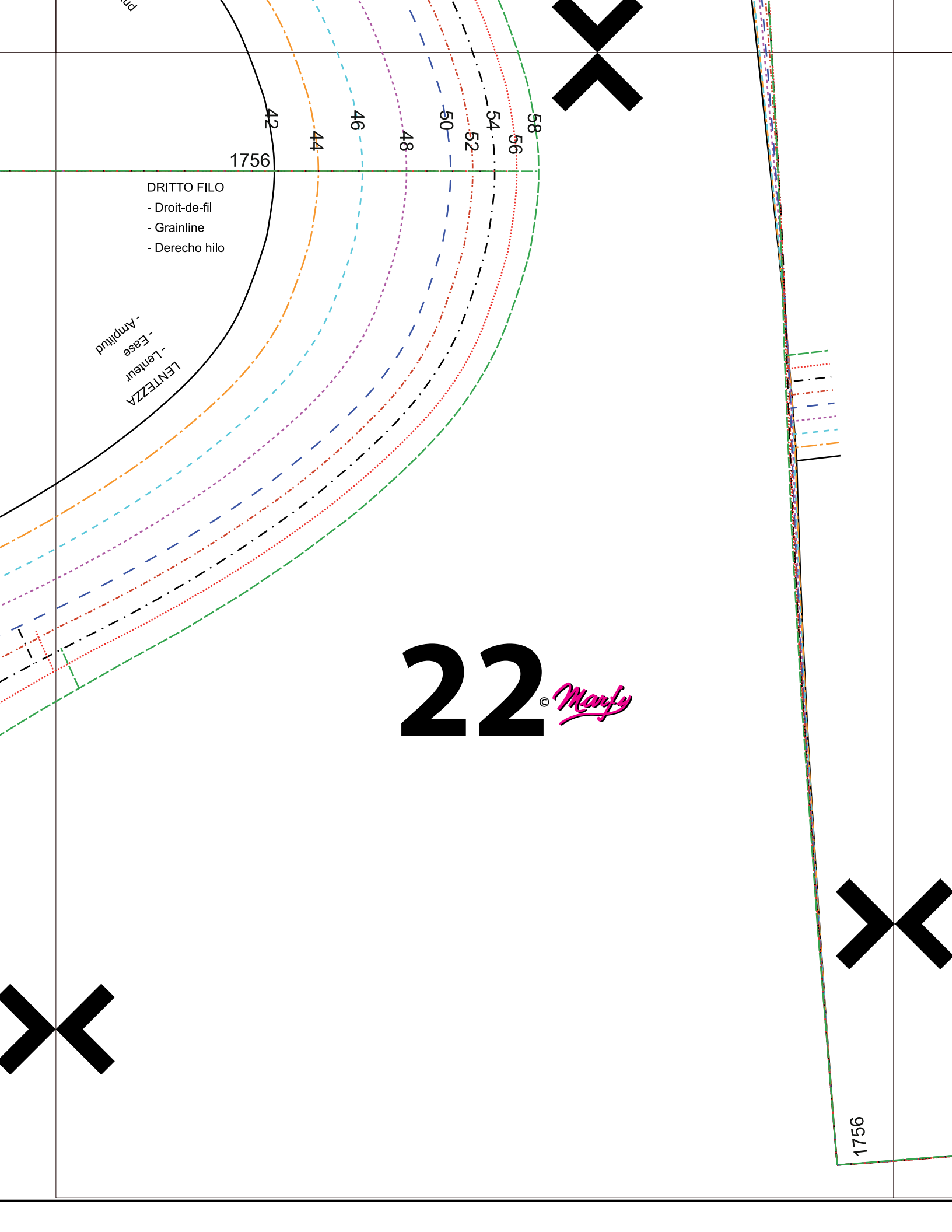


© *Manfy*

# 21

MANICA DAVANTI  
- Manche devant  
- Front sleeve  
- Manga delantera





22 <sup>©</sup> *Manfy*



# 23

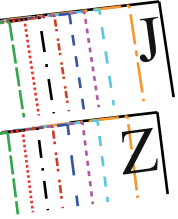
© *Manfy*

DRITTO FILÒ  
- Droit-de-fil  
- Grainline  
- Derecho hilo

42 1756  
44 46 48 50 52 54 56 58

24

© *Manfy*



1756

APPOGGIO PASSAMANERIA  
- Position passementeria  
- Trim position  
- Apoyo pasamaneria