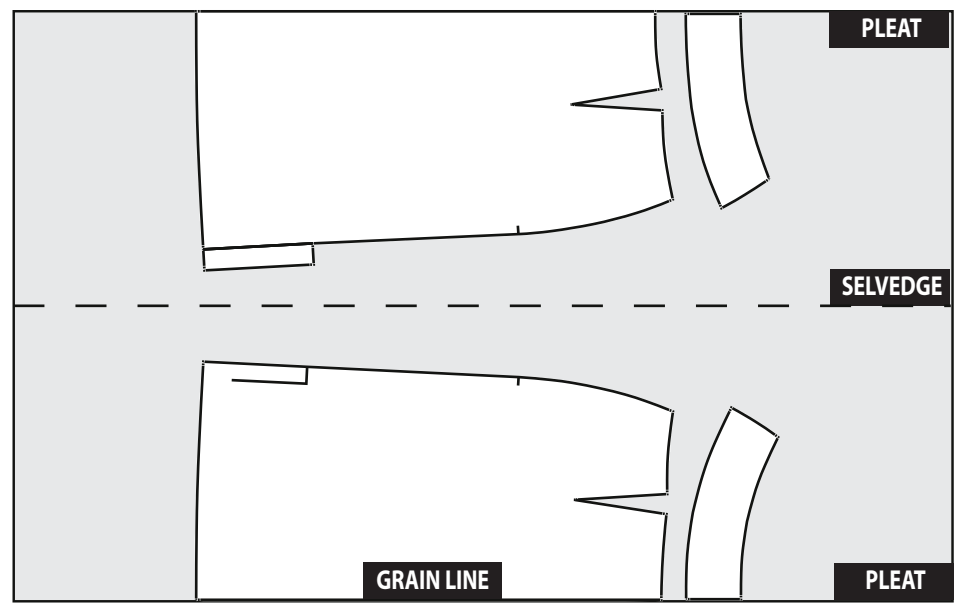
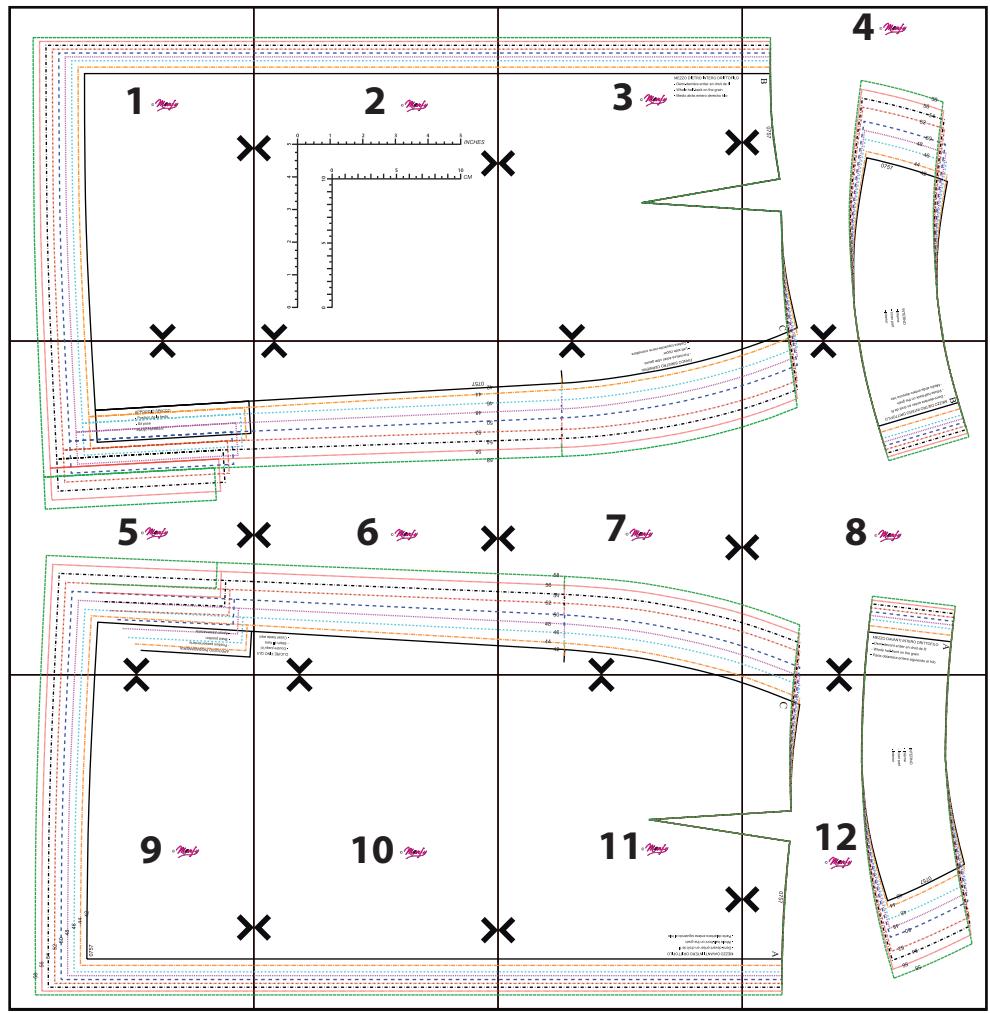


Print and cut tutorial for Marfy patterns in PDF format.

- 1 - Print the file in size **Letter or A4**. Before start printing remember to select **100% or “Actual Size”** as scale of the page, otherwise pattern will be altered. You can check the right scale with the rulers that you find on pattern.
- 2 - Trim with scissors the right edge and the lower edge along the continuous line, so that the arrowheads are aligned with the edge, and join the pieces with adhesive tape matching arrows. For convenience in pulling the sheets, don't cut the left and upper edges, so that one side has a margin of support.
- 3 - Join all pages following the numerical order of the prospect in the first page, be sure that arrowheads match up in each side as well as the lines of the pattern.
- 4 - When the graph will be complete, cut or trace single pieces on onion paper following the line of the chosen size.
- 5 – Now the pattern is ready to be placed on fabric for the cut.
- 6 - If you want to customize the pattern please look at our [specific PDF](#).

**This pattern is only for personal use. It is forbidden the industrial use.
Any reproduction, even partial, is prohibited. All rights reserved.**

© Marfy S.r.l.

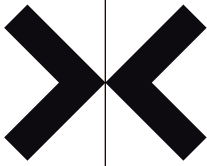


FABRIC LAY PLAN

Please note: the lay plan is a suggestion and dependent on the width of fabric.
 This lay plan was created on fabric mt. 1.40 wide folded in double.

1

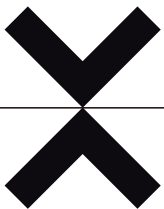
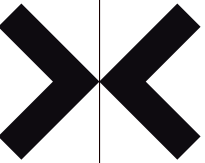
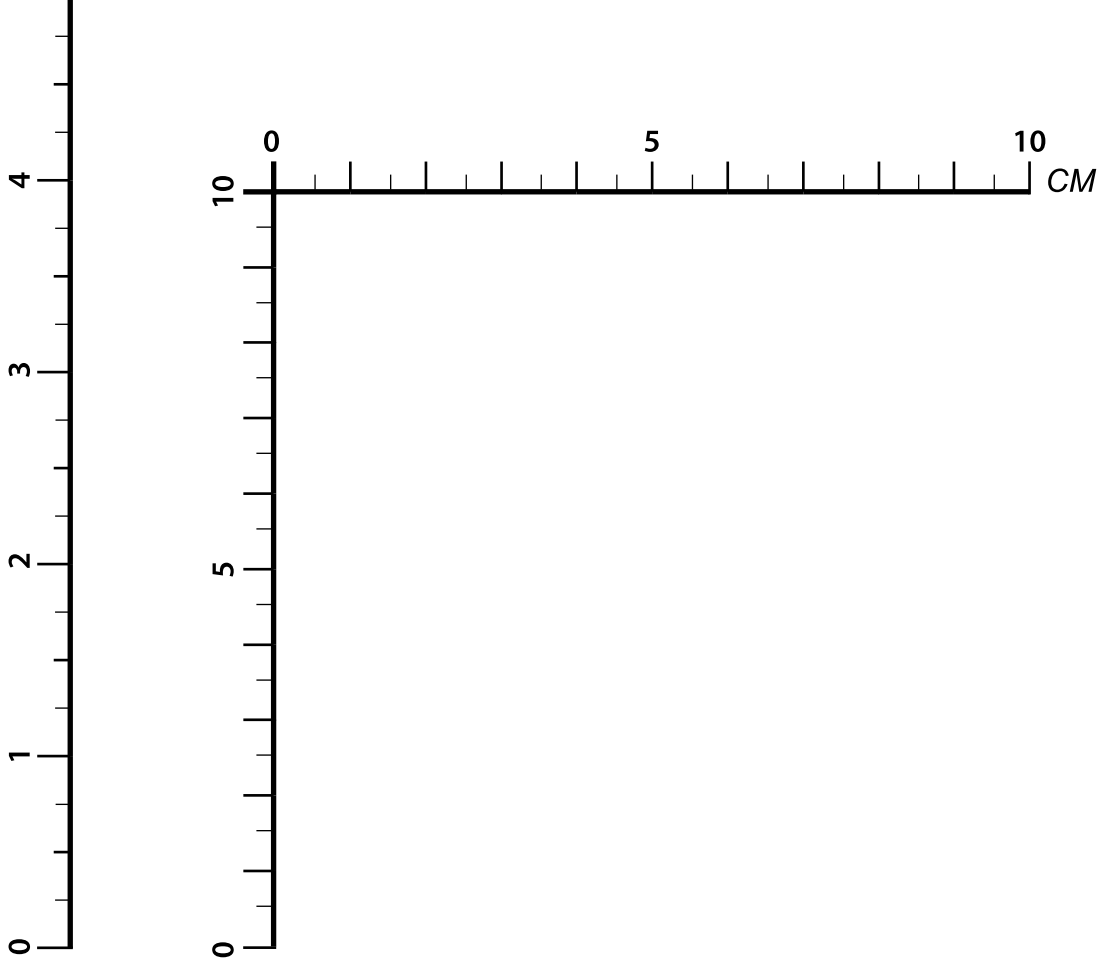
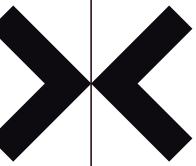
© *Manfy*

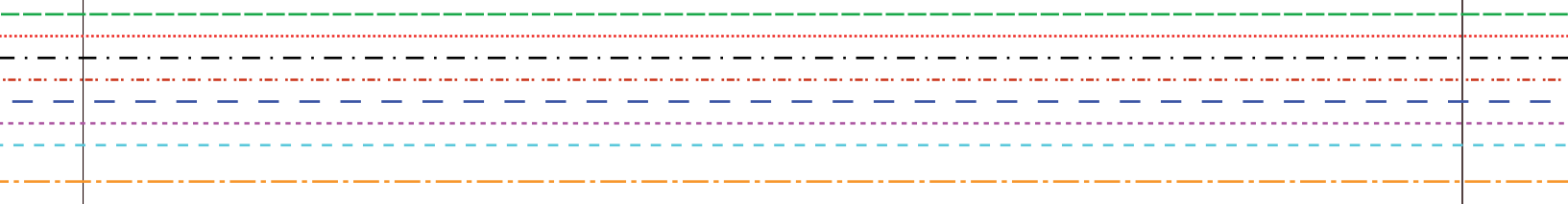




2

© *Manfy*



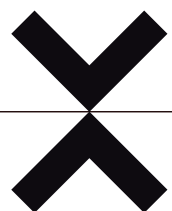
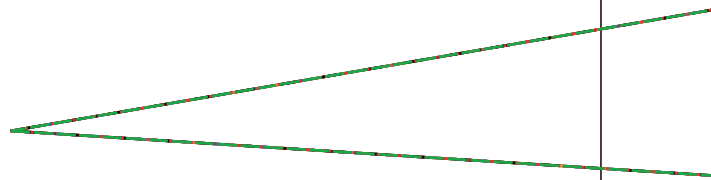
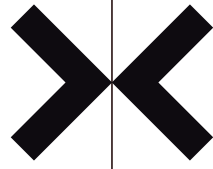
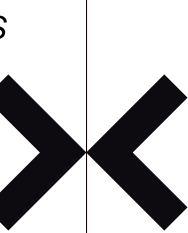


3

© *Manfy*

MEZZO DIETRO INTERO DRITTOFILO

- Demi-derrière entier en droit de fil
- Whole half-back on the grain
- Medio atrás entero derecho hilo

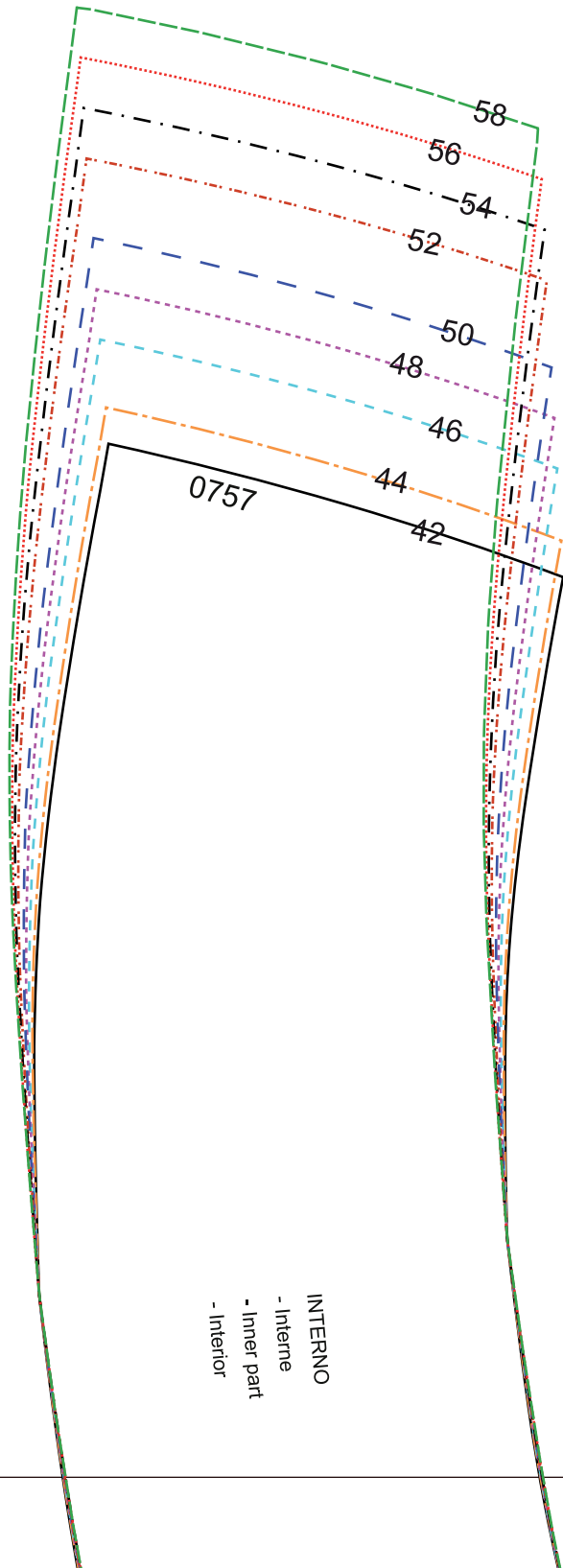
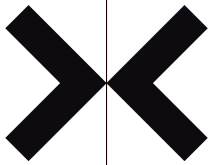


- Cadera izquierda-cierre cremallera
- Left side zipper
- Fermeture éclair

DRITTOFILO
- droit de fil
- main
- no hilo

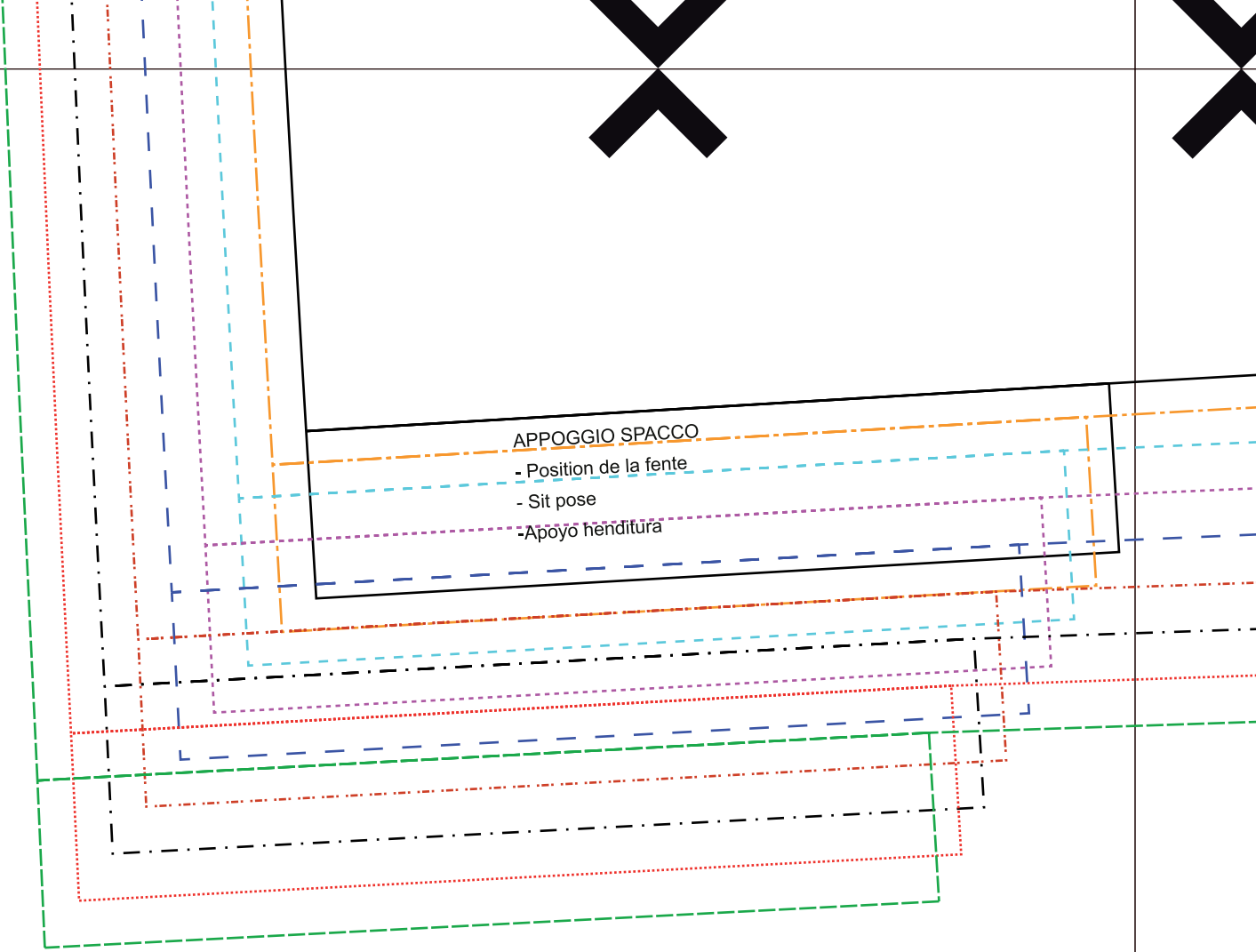
B

0757

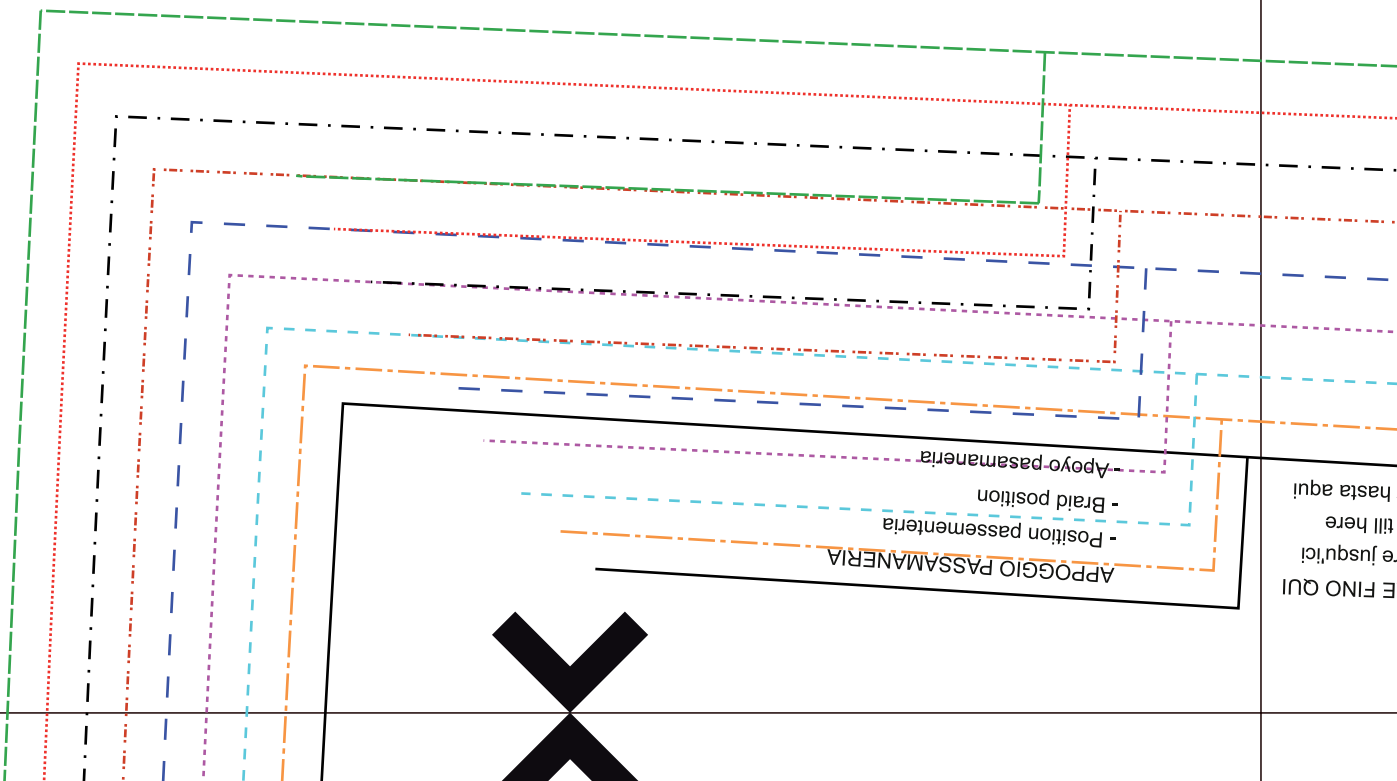


C





5 © *Marfy*



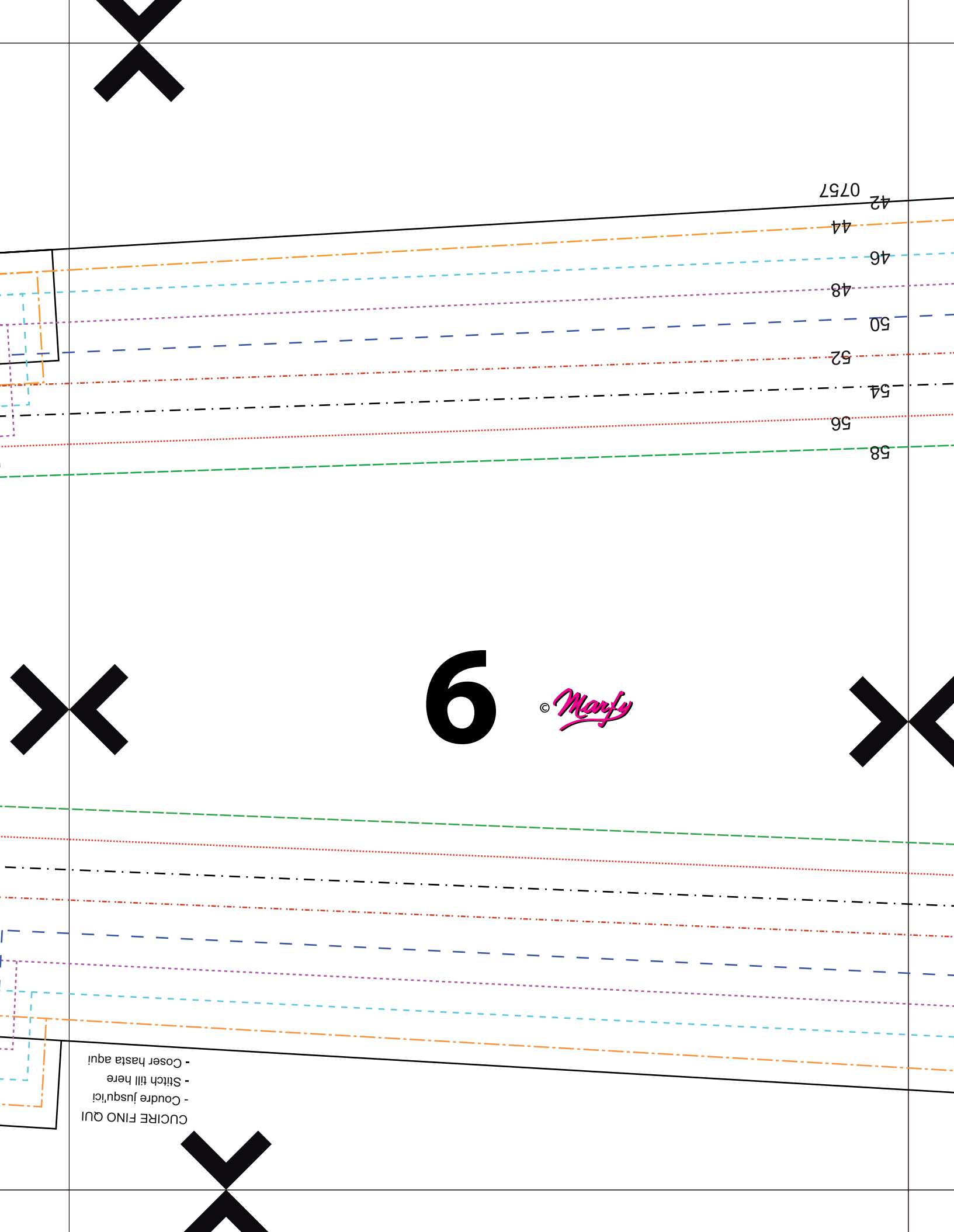
E FINO QUI
e Jusqu'ici
till here
hasta aqui

42
44
46
48
50
52
54
56
58

6

© *Manfy*

CUCIRE FINO QUI
- Coudre jusqu'ici
- Stitch till here
- Coser hasta aqui



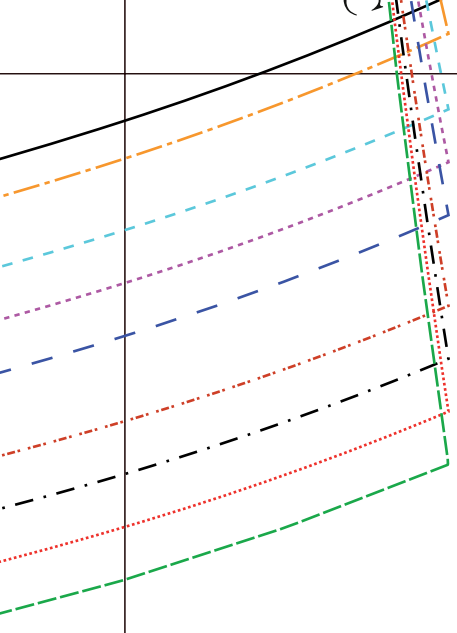
- Cadera izquierda-cierre cremallera
- Left side zipper
- Fermeture éclair côté gauche
- FIANCO SINISTRO CERNIERA

42
44
46
48
50
52
54
56
58

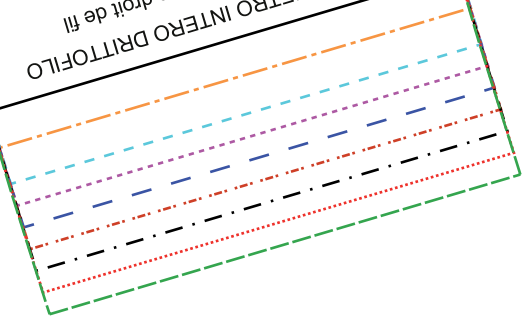
7

© *Manfy*

42
44
46
48
50
52
54
56
58

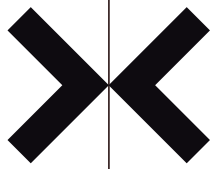


B
MEZZO DIETRO INTERO DRITTOFILO
- Demi-derrère entier en droit de fil
- Whole half-back on the grain
- Medio atrás entero derecho hilo

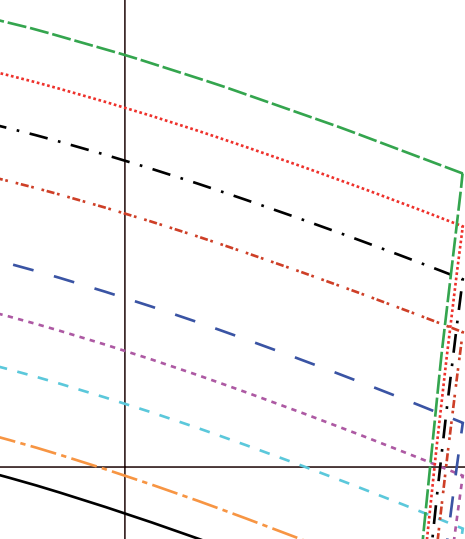


8

© *Manfy*



A
MEZZO DAVANTI INTERO DRITTOFILO
- Demi-devant entier en droit de fil
- Whole half-front on the grain
- Parte delantera entera siguiendo el hilo



58

56

54

52

50

48

46

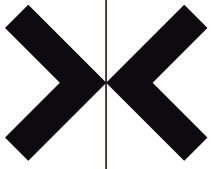
44

42

0757

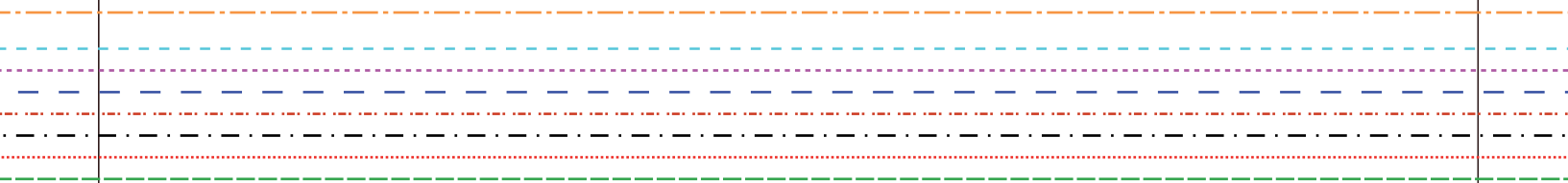
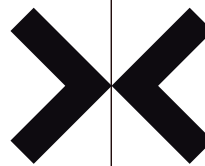
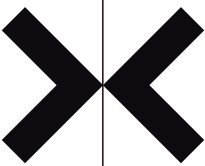
9

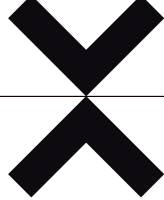
© Marfy





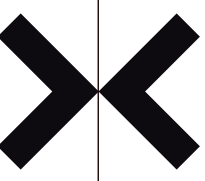
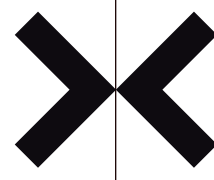
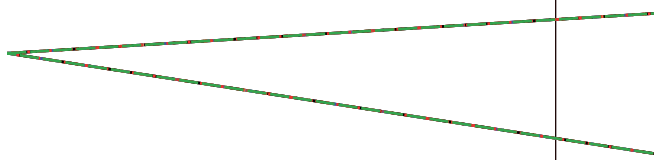
10 *Manfy*



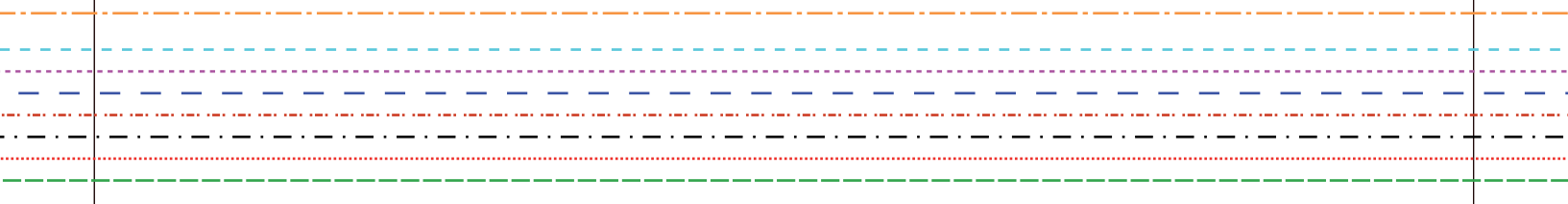


11

© *Manfy*



MEZZO DAVANTI INTERO DRITTOFILO
 - Demi-devant entier en droit de fil
 - Whole half-front on the grain
 - Parte delantera entera siguiendo el hilo





12

© *Marfy*

INTERNO
 - Inteme
 - Inner part
 - Interior

C

0757

A

MEZZO D
 - Demi-de
 - Whole h
 - Parte de

