

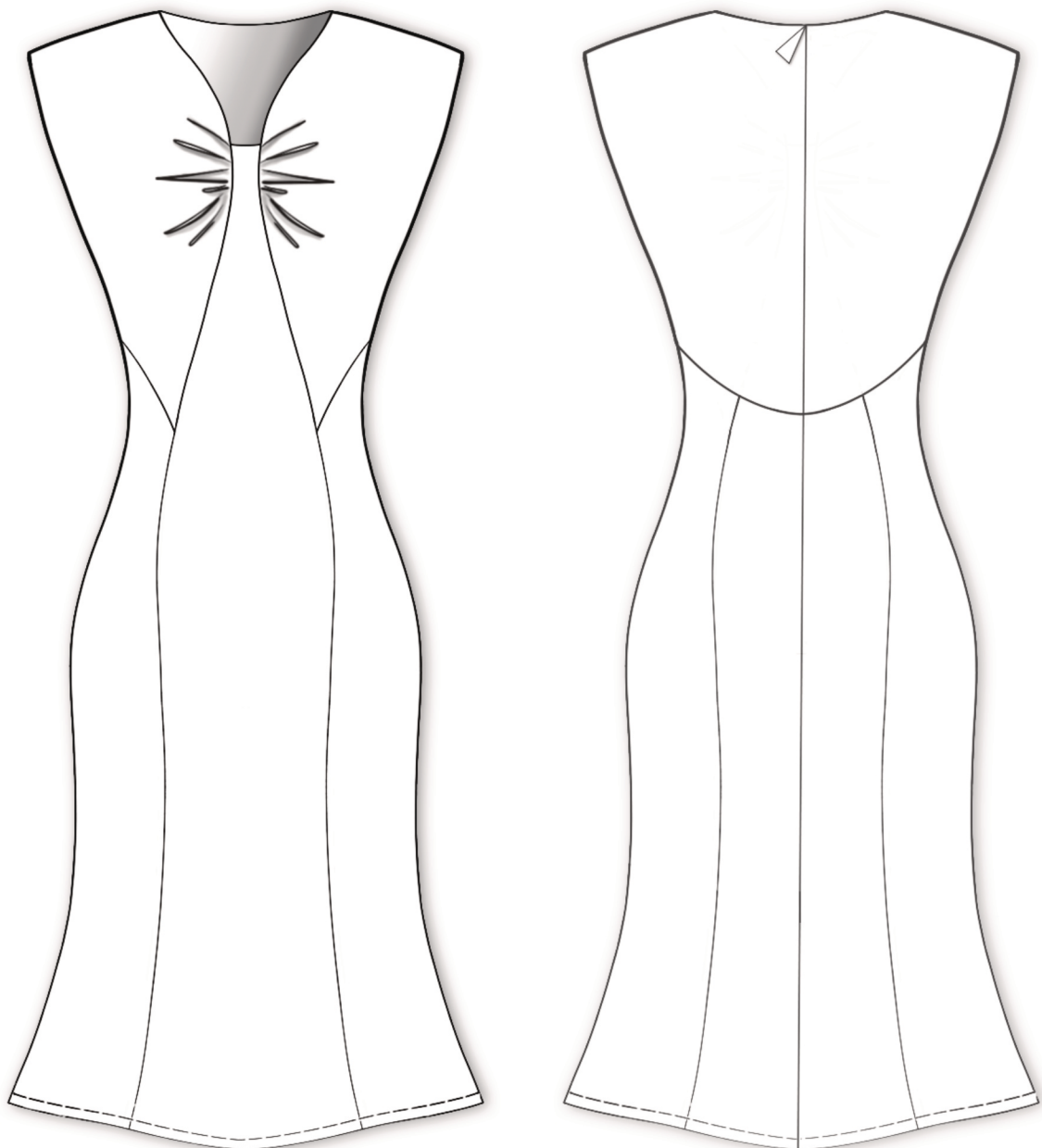
CARTAMODELLO ABITO MARFY

Marfy
3069

MARFY DRESS SEWING PATTERN
PATRON DE COUTURE ROBE MARFY
PATRÓN DE COSTURA VESTIDO MARFY
MSCHNITTMUSTER FÜR DAS MARFY-KLEID

DISEGNO PIATTO

FASHION FLAT SKETCH MODEZEICHNUNG
BOCETO DE MODA EN PLANO ESQUISSE DE MODE EN PLAN



PIAZZAMENTO CONSIGLIATO SU TESSUTO

Nota: il piazzamento è un suggerimento e dipende dall'altezza del tessuto.

PLACEMENT CONSEILLÉ SUR TISSU

Note: le placement est un conseil et varie en fonction de la largeur du tissu.

FABRIC LAY PLAN

Please note: the lay plan is a suggestion and dependent on the width of fabric.

COLOCACIÓN A CONSEJADA SOBRE EL TEJIDO

Nótese: la colocación sobre el tejido es una sugerencia y depende del ancho de tejido.

EMPFOHLENE PLATZIERUNG AUF DEM STOFF

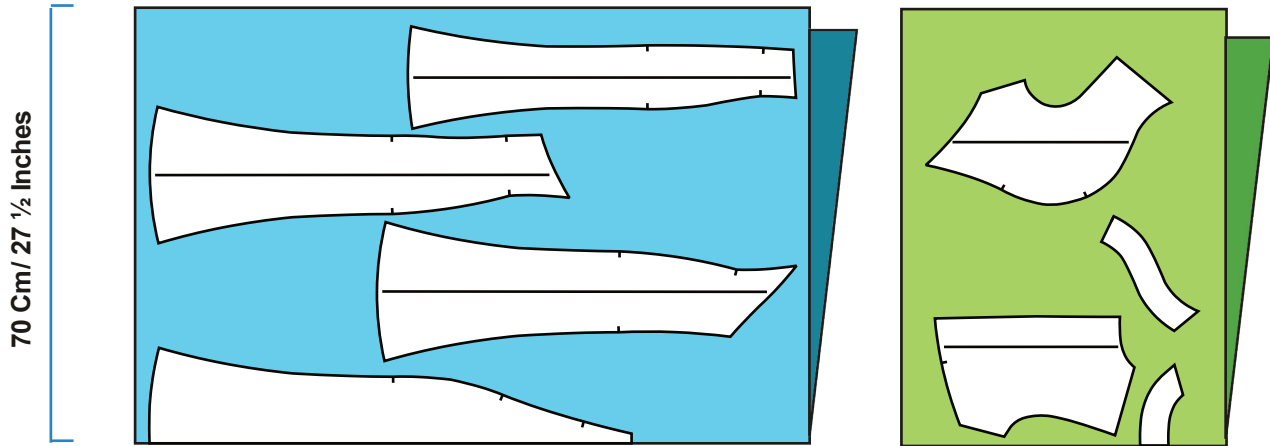
Bitte beachten Sie, dass diese Empfehlung nur ein Vorschlag ist und von den Ausmassen des Stoffmaterials abhängt.

CON TESSUTO BICOLORE

In two-tone fabric
Con tejido bicolor

En tissu bicolore
Mit zweifarbigen Stoff

Cimosa - Lisièr - Selvedge - Orillo - Webkante



Tessuto piegato in doppio. Tissu plié en double.
Fabric folded in half. Tejido plegado doble.
Stoff auf halbe Größe gefaltet.

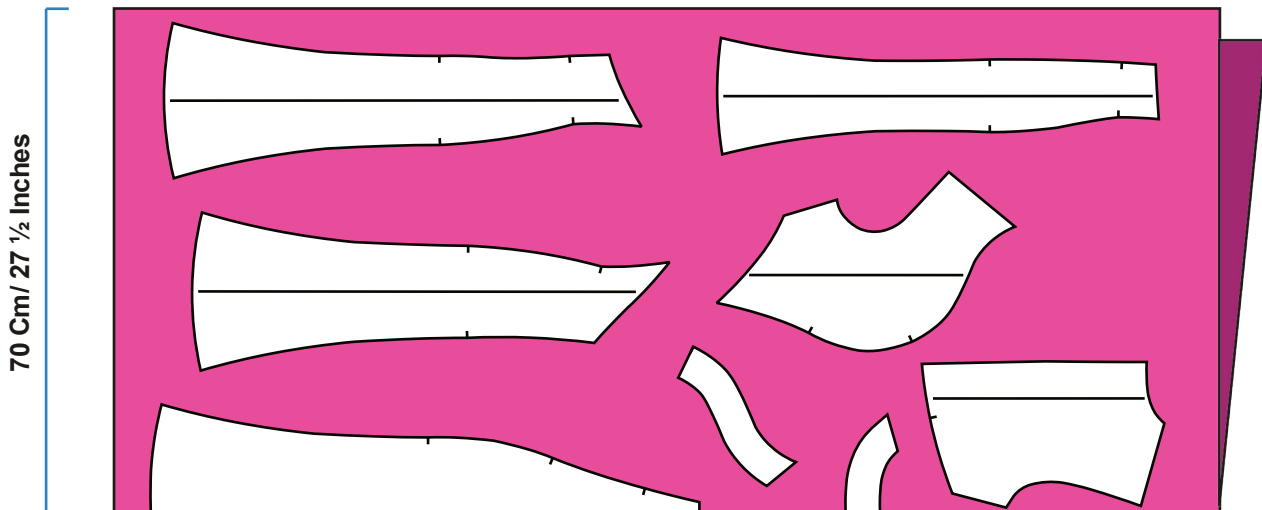
Piega - Pli - Pleat - Pliegue - Stoffbruch

CON TESSUTO IN TINTA UNITA

In a single-colour fabric
Con tejido de un solo color

En tissu unicolore
Aus einfarbigem Stoff

Cimosa - Lisièr - Selvedge - Orillo - Webkante



Tessuto piegato in doppio. Tissu plié en double.
Fabric folded in half. Tejido plegado doble.
Stoff auf halbe Größe gefaltet.

Piega - Pli - Pleat - Pliegue - Stoffbruch



Dress to be made out of bicolour crêpe, with padded shoulders, slightly draped neck and panel skirt flared at the bottom.

Fabric requirement:

Black fabric – width 0.50 meters by height 1.40 meters. White fabric – with fabric-saving layout: width 0.90 meters, height 1.40 meters, one-sided layout: width 1.10 meters, height 1.40 meters.

One-colour fabric - width 1.50 meters height 1.40 meters.

1. Fold the fabric in half with the grain parallel to the selvedge and position the pattern pieces.
2. Cut out each piece of fabric leaving a 1–2 cm seam allowance (whichever you prefer), 1.5 cm at the zip and 4 cm for the skirt hem. Cut the notches on the seam allowance where marked.
3. Overlock or zig-zag stitch the raw edges to prevent fraying.
4. Bring together the panels and sew the skirt, except for the zip opening. While sewing, leave the seam edges open (one folded to the left and one to the right).
5. Repeat for the skirt lining, this time closing the seam edges to one side.
6. The entire bodice needs to be double-layered. First sew the outer and inner parts of the shoulder, then bring together and sew along the neckline up to notch A, inserting elastic or bias tape, and preferably an additional strip of adhesive webbing for extra reinforcement.
7. Iron the shoulders, neckline, and skirt (fabric and lining) well, keeping the seams open.
8. Sew together (both layers) around the armholes, inserting tape for reinforcement. Iron and sew in a 0.7 cm-wide shoulder strap, or a wider or narrower one if you prefer.
9. Sew together the sides of the bodice and iron with seams open as you did with the skirt.
10. Ruche the bodice from Point A to Point R, gathering both layers of fabric at the notches.
11. Keeping both layers of fabric together, position the bodice above the skirt from Point R to Point M.
12. Sew the external layer of the bodice to the skirt, up to the back halfway point, leaving the seams open.
13. Sew on the skirt lining, first from Point A to Point M, keeping the seams closed, then from Point M to Point D (back halfway point), sewing the lining to the inner layer of the bodice that has been left free. Overlock or zig-zag stitch the raw edges to prevent fraying.
14. Sew the zip into the back halfway line, first to the outer layer of fabric, then to the inner layer of the bodice and the skirt lining.
15. To fix the two layers of the dress together, sew a reinforcement stitch from Point M to a point 2 cm from the zip.
16. Now you only need to sew the hem. As the skirt widens towards the bottom, overlock or zig-zag stitch the hem, holding the fabric so that it doesn't fray and gathering it a little so that the hem will be even. Fold over and iron the hem in place, then sew up using a slip-stitch or blind hemming stitch.

How long did it take us?

40 minutes to cut out the fabric

3 ½ hours to sew together

©MARFY S.R.L.